

# Data sheet Actuator.

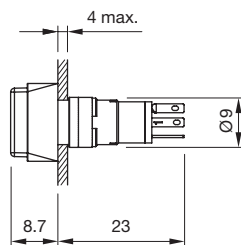
## Part No.: 18-147.035

### Technical data

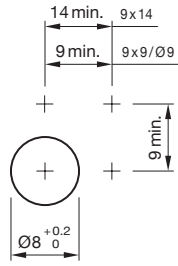


Design	raised
Front form	rectangular
Front dimension	14 mm x 9 mm
Terminal	Soldering terminal
Operating Travel	ca. 2.2 mm ± 0,2 mm
Lens illumination	illuminative
Front bezel colour	Black
Front bezel material	Plastic
Housing colour	Black
Housing material	Plastic
Weight	0.002 kg
IP front protection	IP40, according to IEC 60529
Contact material	Gold
Switching action	Momentary
Switching system	Snap-action switching element
Switching rating	42 V @ 0,1 A
Internal size	12,5 mm x 7,5 mm
Contacts	1 NO
Operating temperature	- 25 °C ... + 65 °C
Operating force	1.4 N
Mechanical lifetime	2 Mio. cycles of operation
Tightening torque	Fixing nut max. 0.2 Nm
Product attributes	
	▪ +/- terminals are not connected

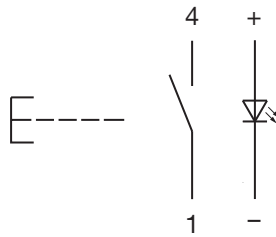
### Dimension drawings



## Mounting cut-outs



## Wiring diagrams

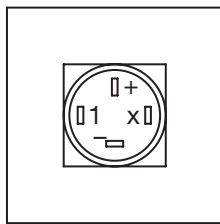


## Component layouts

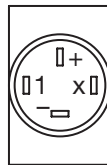
(A)

(B)

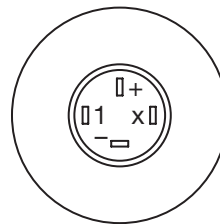
9 x 9 mm  
19 x 19 mm



9 x 14 mm



Ø9 mm  
Ø19 x 19 mm



(C)

(D)

(E)

A = Terminals (rear side)  
 B = Illuminated pushbutton  
 C = x = Contact No.  
 D = 2 = Normally open  
 E = 4 = Normally close