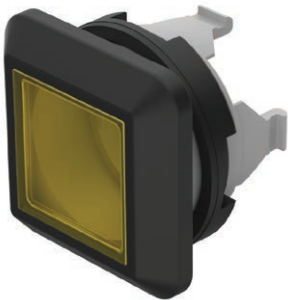


Data sheet Actuator.

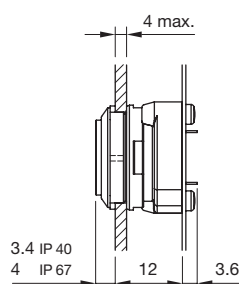
Part No.: 92-443.400

Technical data

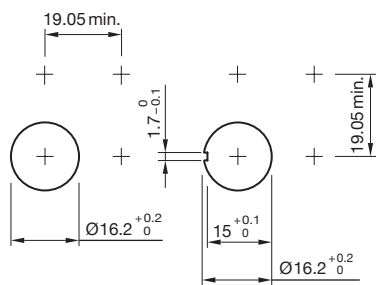


Design	PCB
Front form	square
Front dimension	18,8 mm x 18,8 mm
Dimension	18.8 mm x 18.8 mm
Terminal	null
Illuminative colour	Yellow
Operating Travel	ca. 0.4 mm switching element
Lens illumination	illuminative
Lens colour	Yellow
Lens shape	flush
Lens material	Plastic
Lens optics	transparent
Front bezel colour	Black
Front bezel material	Plastic
Housing colour	White
Housing material	Plastic
Weight	0.003 kg
IP Protection	IP67 front side
Illumination colour	Yellow
Switching action	Momentary
Switching system	Short-travel element
Operating temperature	- 25 °C ... + 70 °C
Operating force	2.7 N ±1 N switching element, 5 N lens
Mechanical lifetime	≥1 Mio. cycles of operation
Tightening torque	Fixing nut max. 0.5 Nm, Fixing screw mounting flange 0.4 Nm

Dimension drawings



Mounting cut-outs



Wiring diagrams

