



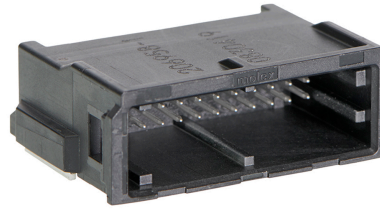
Part Number : [2069585201](#)

Product Description : ConnTAK50 Header, Dual Row, Right-Angle, Surface Mount, 22 Circuits, Key A, Black

Series Number : 206958

Status : Active

Product Category : PCB Headers and Receptacles



Documents & Resources

Drawings

[Drawing 2069583221_sd.pdf](#)

3D Models and Design Files

[3D Model PDF 2069583221.pdf](#)

[3D Model 2069583221_stp.zip](#)


Specifications

[Application Specification 2046310000-AS-000.pdf](#)

[Product Specification 2046310000-PS-000.pdf](#)

Product Environment Compliance

Compliance

GADSL/IMDS	Compliant with Exemption 44; 33
China RoHS	
EU ELV	Compliant per 2000/53/EC
Low-Halogen Status	Low-Halogen per IEC 61249-2-21
REACH SVHC	Not Contained per D(2022)9120-DC (17 Jan 2023)
EU RoHS	Compliant per EU 2015/863

[Multiple Part Product Compliance Statements](#)

- Eu RoHS
- REACH SVHC
- Low-Halogen

[Multiple Part Industry Compliance Documents](#)

- IPC 1752A Class C

- IPC 1752A Class D
- Molex Product Compliance Declaration
- IEC-62474
- chemSHERPA (xml)

EU RoHS Certificate of Compliance

Part Details

General

Status	Active
Category	PCB Headers and Receptacles
Series	206958
Description	ConnTAK50 Header, Dual Row, Right-Angle, Surface Mount, 22 Circuits, Key A, Black
Application	Automotive, Power, Signal, Wire-to-Board
Component Type	PCB Header
Product Family	ConnTAK50 Connector System
Product Name	ConnTAK50
UPC	195842168794

Electrical

Current - Maximum per Contact	3.0A (for reference only), See Product Specification
Voltage - Maximum	14V AC/DC

Physical

Breakaway	No
Circuits (Loaded)	22
Circuits (maximum)	22
Color - Resin	Black
Durability (mating cycles max)	10
First Mate / Last Break	No
Glow-Wire Capable	No
Guide to Mating Part	No
Keying to Mating Part	Yes
Lock to Mating Part	Yes

Material - Metal	Brass
Material - Plating Mating	Matte Tin
Material - Resin	High Temperature Nylon
Net Weight	3.060/g
Number of Rows	2
Orientation	Right Angle
Packaging Type	Embossed Tape on Reel
PCB Locator	No
PCB Retention	None
Pitch - Mating Interface	1.80mm
Pitch - Termination Interface	1.80mm
Plating min - Mating	1.000µm
Polarized to Mating Part	Polarizing Ribs
Polarized to PCB	No
Shrouded	Fully
Temperature Range - Operating	-40° to +100°C USCAR Class T2, -40° to +105°C LV-214
Termination Interface Style	Surface Mount

Mates With / Use With

Mates with Part(s)

Description	Part Number
ConnTAK50 Dual Row Tang Receptacles	<u>205825</u>