



MASTER VALUE LEDspot MV



MASTERLEDspot VLE D 6.2-80W GU10 940 36D UK

Delivering a warm, halogen-like accent beam, the MASTER VALUE is a perfect fit for spot lighting. Thanks to its high CRI, it achieves more natural colours, creating cosy and comfortable ambience for residential and hospitality projects, and emphasising the beauty of merchandise in retail. These LED spots MV GU10 have the familiar look and feel of spot lamps, keeping the classic beauty of glass spots and adding the strong performance of LED technology. The dimming function enables you to create the atmosphere you desire, and it works with broad selection of dimmers. The MASTER VALUE also offers more energy savings than normal LED spots.

Warnings and Safety

- Operating temperature range is between -20° C and 45° C ambient
- Only to apply in dry or damp locations and most of open fixtures with lamp-holders that offer sufficient space (10 mm free air space)
- Not intended for use with emergency light fixtures or exit lights

Product data

General information	
Lighting Technology	LED
Switching Cycle	50,000
Nominal lifetime	25,000 h
Cap base	GU10 [GU10]
Light technical	
Colour Code	940 [CCT of 4000K]
Beam angle (nom.)	36 degree(s)
Luminous Flux	575 lm
Luminous intensity (nom.)	850 cd
Colour designation	Cool White (CW)
Correlated Colour Temperature	4000 K
Luminous Efficacy (rated) (Nom)	92.00 lm/W
Colour consistency	<6
Colour rendering index (CRI)	90
LLMF at end of nominal lifetime (nom.)	70 %
Luminous flux in 90° cone (rated)	575 lm
Flickering value (PstLM)	1

MASTER VALUE LEDspot MV

Stroboscopic effect	0.4
Operating and electrical	
Line Frequency	50 to 60 Hz
Input frequency	50 to 60 Hz
Power Consumption	6.2 W
Lamp current (nom.)	33 mA
Wattage equivalent	80 W
Starting time (nom.)	0.5 s
Warm-up time to 60% light	0.5 s
Power Factor (Fraction)	0.88
Voltage (nom.)	220-240 V
Temperature	
T-Case maximum (nom.)	80 °C
Controls and dimming	
Dimmable	Yes
Mechanical and housing	
Bulb shape	PAR16 [PAR 2 inch/50 mm]

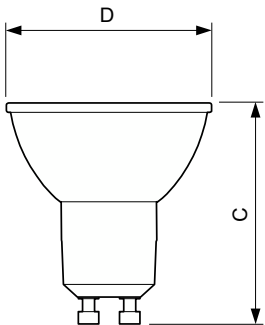
Approval and application

Energy Efficiency Class	F
Suitable for accent lighting	Yes
Energy consumption kWh/1,000 hours	7 kWh
EPREL registration number	391908
EU RoHS compliant	Yes

Product data

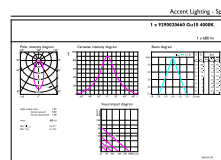
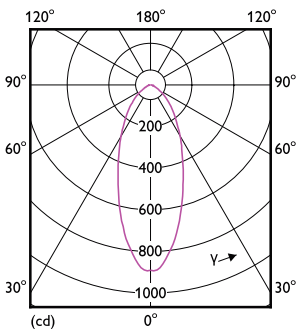
Full EOC	871869970523701
Order product name	MASLEDspot VLE D 6.2-80W GU10 940 36D UK
Order code	70523701
SAP numerator – quantity per pack	1
Numerator – packs per outer box	10
Material number (12NC)	929002066099
Full product name	MASTERLEDspot VLE D 6.2-80W GU10 940 36D UK
EAN/UPC – Case	8719514405646

Dimensional drawing



Product	D	C
MASLEDspot VLE D 6.2-80W GU10 940 36D UK	50 mm	54 mm

Photometric data



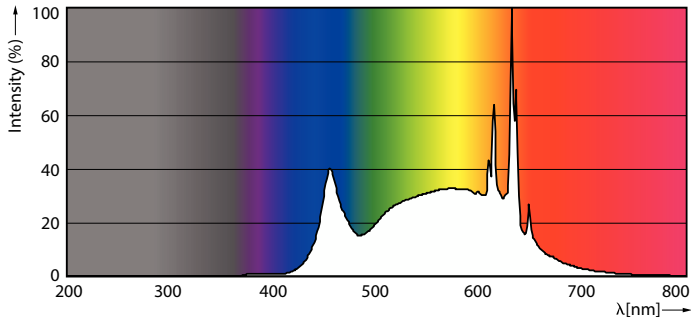
002027 Photometric L1 - Master Lighting L1 - Page 1/1

Light Distribution Diagram - MASLEDspot VLE D 6.2-80W GU10 940 36D UK

Accent Lighting Spots - MASLEDspot VLE D 6.2-80W GU10 940 36D UK

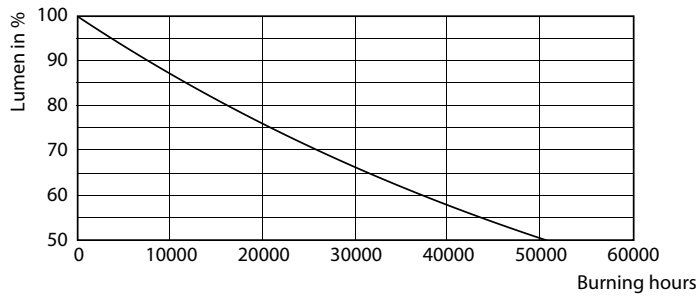
MASTER VALUE LEDspot MV

Photometric data

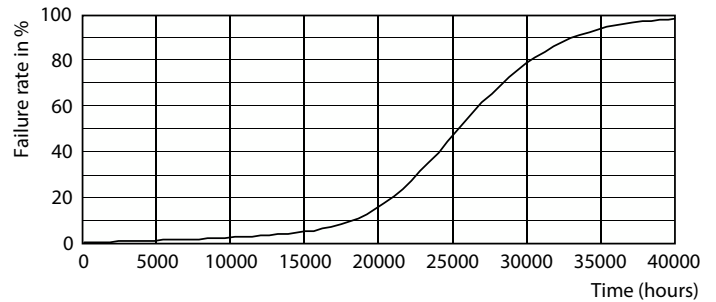


Spectral Power Distribution Colour - MASLEDspot VLE D 6.2-80W GU10 940 36D UK

Lifetime



Lumen Maintenance Diagram - MASLEDspot VLE D 6.2-80W GU10 940 36D UK



Life Expectancy Diagram - MASLEDspot VLE D 6.2-80W GU10 940 36D UK

