



MASTER VALUE LEDspot MV

MASTER LEDspot VLE D 650lm GU10 930 120D UK

Delivering a warm, halogen-like accent beam, the MASTER VALUE is a perfect fit for spot lighting. Thanks to its high CRI, it achieves more natural colours, creating cosy and comfortable ambience for residential and hospitality projects, and emphasising the beauty of merchandise in retail. These LED spots MV GU10 have the familiar look and feel of spot lamps, keeping the classic beauty of glass spots and adding the strong performance of LED technology. The dimming function enables you to create the atmosphere you desire, and it works with broad selection of dimmers. The MASTER VALUE also offers more energy savings than normal LED spots.

Warnings and Safety

- Operating temperature range is between -20° C and 45° C ambient
- Only to apply in dry or damp locations and most of open fixtures with lamp-holders that offer sufficient space (10 mm free air space)
- Not intended for use with emergency light fixtures or exit lights

Product data

| General information | |
|--|--------------------|
| Lighting Technology | LED |
| Switching Cycle | 50,000 |
| Nominal lifetime | 25,000 h |
| Cap base | GU10 [GU10] |
| Light technical | |
| Colour Code | 930 [CCT of 3000K] |
| Beam angle (nom.) | 120 degree(s) |
| Luminous Flux | 650 lm |
| Luminous intensity (nom.) | 200 cd |
| Colour designation | White (WH) |
| Correlated Colour Temperature | 3000 K |
| Luminous Efficacy (rated) (Nom) | 104.00 lm/W |
| Colour consistency | <6 |
| Colour rendering index (CRI) | 90 |
| LLMF at end of nominal lifetime (nom.) | 70 % |
| Flickering value (PstLM) | 1 |
| Stroboscopic effect | 0.4 |

MASTER VALUE LEDspot MV

Operating and electrical

| | |
|---------------------------|-------------|
| Line Frequency | 50 to 60 Hz |
| Input frequency | 50 to 60 Hz |
| Power Consumption | 6.2 W |
| Lamp current (nom.) | 33 mA |
| Starting time (nom.) | 0.5 s |
| Warm-up time to 60% light | 0.5 s |
| Power Factor (Fraction) | 0.88 |
| Voltage (nom.) | 220-240 V |

Temperature

| | |
|-----------------------|-------|
| T-Case maximum (nom.) | 80 °C |
|-----------------------|-------|

Controls and dimming

| | |
|----------|-----|
| Dimmable | Yes |
|----------|-----|

Mechanical and housing

| | |
|------------|--------------------------|
| Bulb shape | PAR16 [PAR 2 inch/50 mm] |
|------------|--------------------------|

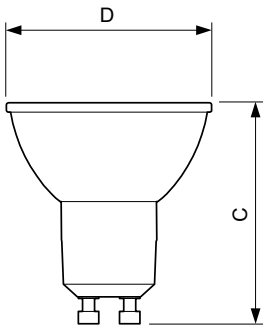
Approval and application

| | |
|------------------------------------|--------|
| Energy Efficiency Class | F |
| Suitable for accent lighting | No |
| Energy consumption kWh/1,000 hours | 7 kWh |
| EPREL registration number | 391917 |
| EU RoHS compliant | Yes |

Product data

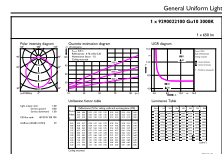
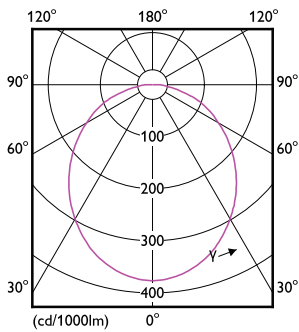
| | |
|-----------------------------------|---|
| Full EOC | 871869970609801 |
| Order product name | MAS LEDspot VLE D 650lm GU10 930 120D UK |
| Order code | 70609801 |
| SAP numerator – quantity per pack | 1 |
| Numerator – packs per outer box | 10 |
| Material number (12NC) | 929002210099 |
| Full product name | MASTER LEDspot VLE D 650lm GU10 930 120D UK |
| EAN/UPC – Case | 8719514405592 |

Dimensional drawing



| Product | D | C |
|--|-------|-------|
| MAS LEDspot VLE D 650lm GU10 930 120D UK | 50 mm | 54 mm |

Photometric data

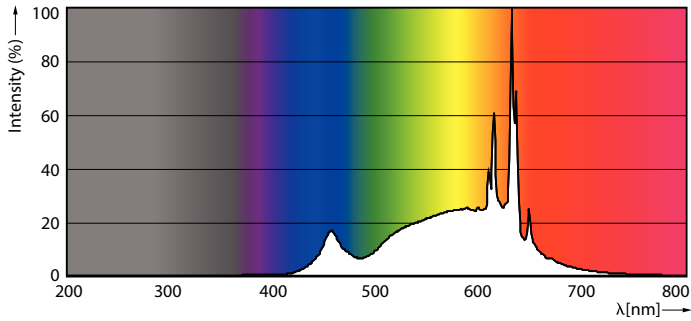


Light Distribution Diagram - MAS LEDspot VLE D 650lm GU10 930 120D UK

Accent Lighting Spots - MAS LEDspot VLE D 650lm GU10 930 120D UK

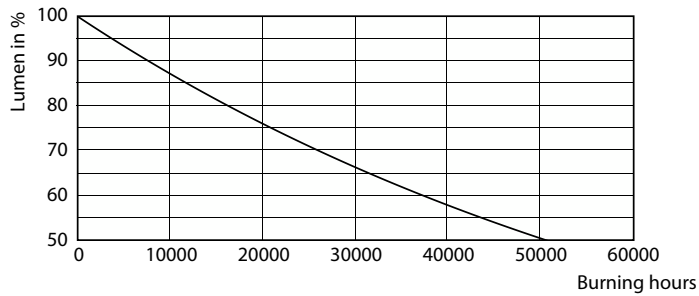
MASTER VALUE LEDspot MV

Photometric data

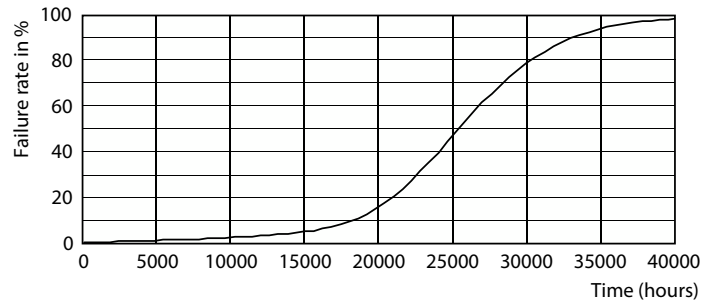


Spectral Power Distribution Colour - MAS LEDspot VLE D 650lm GU10 930 120D UK

Lifetime



Lumen Maintenance Diagram - MAS LEDspot VLE D 650lm GU10 930 120D UK



Life Expectancy Diagram - MAS LEDspot VLE D 650lm GU10 930 120D UK

