



MASTER Ultra-efficient LED candles and lustres

MAS LEDCandleND2.3-40W E14 830B35 CLG UE

This is the most efficient LED candle from Philips brand. 210lm/W helps to concrete the company statement of sustainability. 50000 hour lifetime helps to extend the replacement cycle to reduce the waste. This is not only a high SPEC product, but also keeps the light quality of Philips brand

Product data

General information	
Lighting Technology	LED
Flux measurement reference	Sphere
Switching Cycle	50,000
Nominal lifetime	50,000 h
Cap base	E14 [E14]
Light technical	
Colour Code	830 [CCT of 3000K]
Luminous Flux	485 lm
Colour designation	White (WH)
Correlated Colour Temperature	3000 K
Luminous Efficacy (rated) (Nom)	210 lm/W
Colour consistency	<6
Colour rendering index (CRI)	80
LLMF at end of nominal lifetime (nom.)	70 %
Flickering value (PstLM)	1

Stroboscopic effect	0.4
Operating and electrical	
Line Frequency	50 to 60 Hz
Input frequency	50 to 60 Hz
Power Consumption	2.3 W
Lamp current (nom.)	30 mA
Wattage equivalent	40 W
Starting time (nom.)	0.5 s
Warm-up time to 60% light	0.5 s
Power Factor (Fraction)	0.35
Voltage (nom.)	220-240 V
Temperature	
T-Case maximum (nom.)	70 °C

MASTER Ultra-efficient LED candles and lustres

Controls and dimming

Dimmable No

Mechanical and housing

Lamp Finish Clear

Bulb shape B35 [B 35 mm]

Approval and application

Energy Efficiency Class A

Energy consumption kWh/1,000 hours 3 kWh

EPREL registration number 1370032

CE mark Yes

EU RoHS compliant Yes

Product data

Full EOC 871951443595700

Order product name MAS LEDCandleND2.3-40W E14 830B35 CLG UE

Order code 43595700

SAP numerator – quantity per pack 1

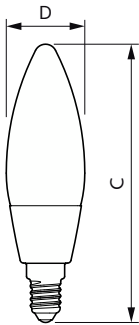
Numerator – packs per outer box 10

Material number (12NC) 929003480802

Full product name MAS LEDCandleND2.3-40W E14 830B35 CLG UE

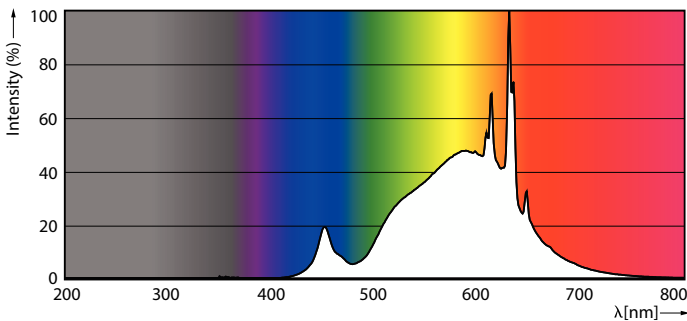
EAN/UPC – Case 8719514435964

Dimensional drawing

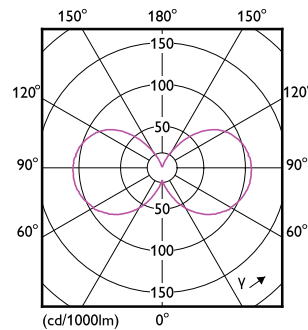


Product	D	C
MAS LEDCandleND2.3-40W E14 830B35 CLG UE	35 mm	125 mm

Photometric data



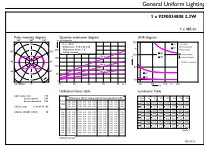
Spectral Power Distribution Colour - MAS LEDCandleND2.3-40W E14 830B35 CLG UE



Light Distribution Diagram - MAS LEDCandleND2.3-40W E14 830B35 CLG UE

MASTER Ultra-efficient LED candles and lustres

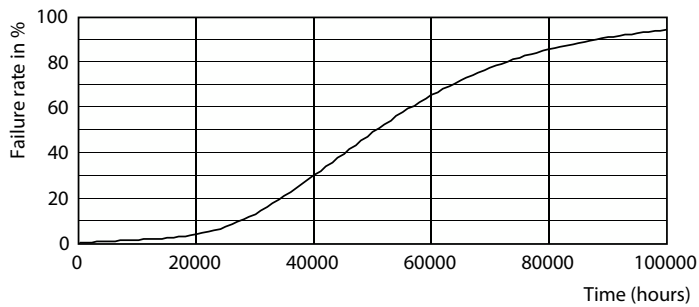
Photometric data



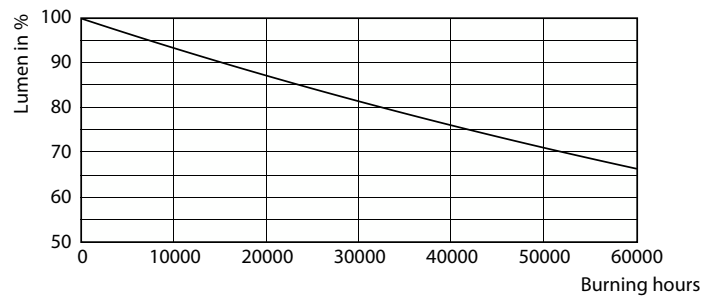
General Uniform Lighting
1x 1000000 Lumen
1x 200000 Lumen
1x 100000 Lumen
1x 50000 Lumen
1x 25000 Lumen
1x 12500 Lumen
1x 6250 Lumen
1x 3125 Lumen
1x 1562 Lumen
1x 781 Lumen
1x 391 Lumen
1x 195 Lumen
1x 97 Lumen
1x 48 Lumen
1x 24 Lumen
1x 12 Lumen
1x 6 Lumen
1x 3 Lumen
1x 1.5 Lumen
1x 0.75 Lumen
1x 0.37 Lumen
1x 0.19 Lumen
1x 0.09 Lumen
1x 0.04 Lumen
1x 0.02 Lumen
1x 0.01 Lumen

General uniform lighting - MAS LEDCandleND2.3-40W E14 830B35 CLG UE

Lifetime



Life Expectancy Diagram - MAS LEDCandleND2.3-40W E14 830B35 CLG UE



Lumen Maintenance Diagram - MAS LEDCandleND2.3-40W E14 830B35 CLG UE

