



# CorePro LED tube Universal T8



## CorePro LEDtube UN 600mm HO 8W840 T8

The new Philips CorePro LEDtube Universal T8 brings simplicity to your lighting project. You don't need to pay attention to the driver technology anymore. Thanks to a unique design, Philips CorePro LEDtube Universal T8 directly fits in luminaires operating either on Electro Magnetic ballasts or HF Electronic ballasts or mains power connection. So simple to operate and no need to carry double stock of products! Perfectly safe, reliable & easy to install Philips CorePro LEDtube Universal T8 is the ideal alternative to standard fluorescent tubes to save energy and lower investment.

### Product data

General information		Flickering value (PstLM)		1
Lighting Technology	LED	Stroboscopic effect	0.9	
Flux measurement reference	Sphere	<b>Operating and electrical</b>		
Switching Cycle	50,000	Line Frequency	50 to 60 Hz	
Nominal lifetime	50,000 h	Input frequency	50 to 60 Hz	
Cap base	G13 [Medium Bi-Pin Fluorescent]	Power Consumption	8 W	
<b>Light technical</b>		Lamp current (nom.)	40 mA	
Colour Code	840 [CCT of 4000K]	Starting time (nom.)	0.5 s	
Beam angle (nom.)	240 degree(s)	Warm-up time to 60% light	0.5 s	
Luminous Flux	900 lm	Power Factor (Fraction)	0.9	
Colour designation	Cool White (CW)	Voltage (nom.)	220-240 V	
Correlated Colour Temperature	4000 K	<b>Temperature</b>		
Luminous Efficacy (rated) (Nom)	112 lm/W	Ambient temperature range	-20°C to 45°C	
Colour consistency	<6	T-Case maximum (nom.)	45 °C	
Colour rendering index (CRI)	80			
LLMF at end of nominal lifetime (nom.)	70 %			

# CorePro LED tube Universal T8

## Controls and dimming

Dimmable No

## Mechanical and housing

Lamp Finish Frosted  
 Bulb material Glass  
 Product length 600 mm  
 Bulb shape Tube, double-ended

## Approval and application

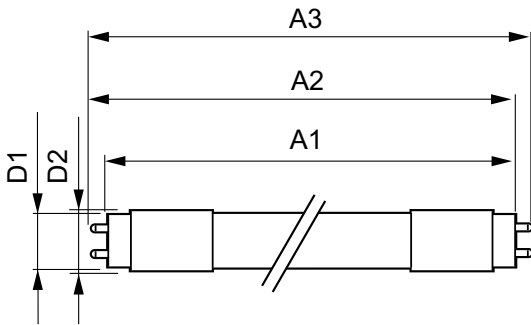
Energy Efficiency Class E  
 Energy-saving product Yes  
 Approval marks RoHS compliance TUV CE marking KEMA Keur certificate  
 Energy consumption kWh/1,000 hours 8 kWh

EPREL registration number 1315794  
 CE mark Yes  
 EU RoHS compliant Yes

## Product data

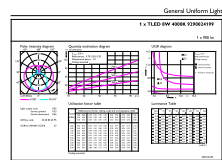
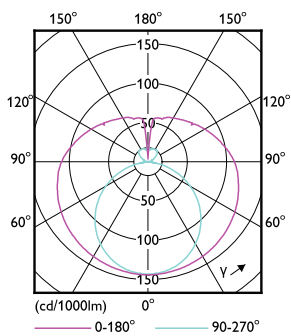
Full EOC 871869978279500  
 Order product name CorePro LEDtube UN 600mm HO 8W840 T8  
 Order code 78279500  
 SAP numerator – quantity per pack 1  
 Numerator – packs per outer box 10  
 Material number (12NC) 929002419902  
 Full product name CorePro LEDtube UN 600mm HO 8W840 T8  
 EAN/UPC - Case 8718699782801

## Dimensional drawing



Product	D1	D2	A1	A2	A3
CorePro LEDtube UN 600mm HO 8W840 T8	25.7 mm	28 mm	588.6 mm	595.7 mm	602.8 mm

## Photometric data

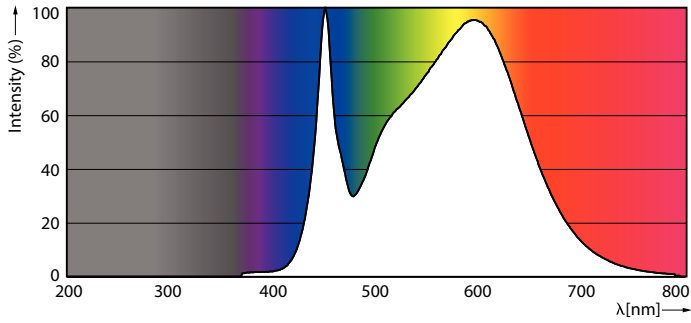


## Light Distribution Diagram

## General uniform lighting – CorePro LEDtube UN 600mm HO 8W840 T8

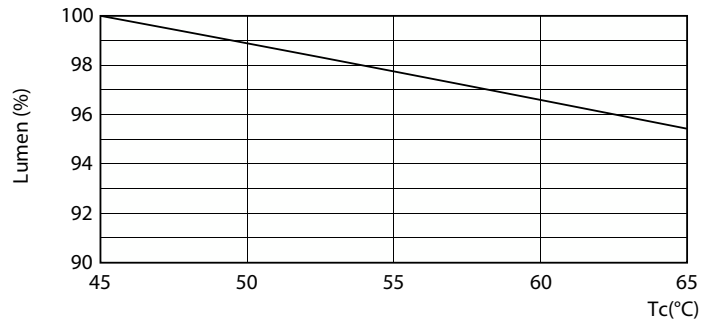
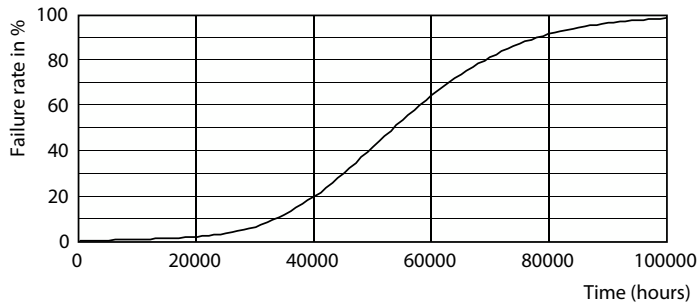
# CorePro LED tube Universal T8

## Photometric data



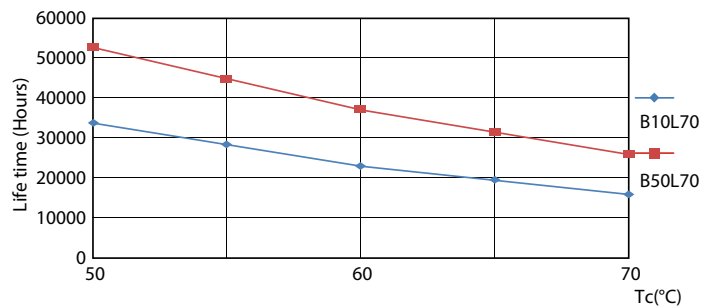
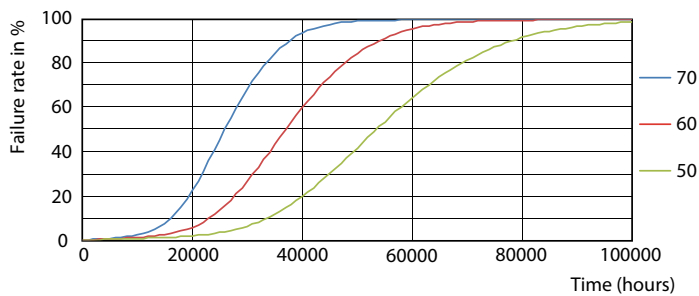
Spectral Power Distribution Colour - CorePro LEDtube UN 600mm HO 8W840 T8

## Lifetime



Life Expectancy Diagram - CorePro LEDtube UN 600mm HO 8W840 T8

Lumen Maintenance Diagram

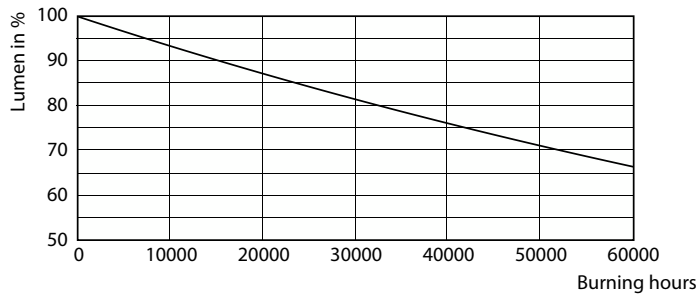


Life Expectancy Diagram - CorePro LEDtube UN 600mm HO 8W840 T8

Life Expectancy Diagram - CorePro LEDtube UN 600mm HO 8W840 T8

# CorePro LED tube Universal T8

## Lifetime



Lumen Maintenance Diagram - CorePro LEDtube UN 600mm HO 8W840 T8

