



CorePro LED tube Universal T8



CorePro LEDtube UN 1200mm HO 18W840 T8

The new Philips CorePro LEDtube Universal T8 brings simplicity to your lighting project. You don't need to pay attention to the driver technology anymore. Thanks to a unique design, Philips CorePro LEDtube Universal T8 directly fits in luminaires operating either on Electro Magnetic ballasts or HF Electronic ballasts or mains power connection. So simple to operate and no need to carry double stock of products! Perfectly safe, reliable & easy to install Philips CorePro LEDtube Universal T8 is the ideal alternative to standard fluorescent tubes to save energy and lower investment.

Product data

General information		Flickering value (PstLM)		1
Lighting Technology	LED	Stroboscopic effect	0.9	
Flux measurement reference	Sphere	Operating and electrical		
Switching Cycle	50,000	Line Frequency	50 to 60 Hz	
Nominal lifetime	50,000 h	Input frequency	50 to 60 Hz	
Cap base	G13 [Medium Bi-Pin Fluorescent]	Power Consumption	18 W	
Light technical		Lamp current (nom.)	100 mA	
Colour Code	840 [CCT of 4000K]	Starting time (nom.)	0.5 s	
Beam angle (nom.)	240 degree(s)	Warm-up time to 60% light	0.5 s	
Luminous Flux	2,000 lm	Power Factor (Fraction)	0.9	
Colour designation	Cool White (CW)	Voltage (nom.)	220-240 V	
Correlated Colour Temperature	4000 K	Temperature		
Luminous Efficacy (rated) (Nom)	111 lm/W	Ambient temperature range	-20°C to 45°C	
Colour consistency	<6	T-Case maximum (nom.)	55 °C	
Colour rendering index (CRI)	80			
LLMF at end of nominal lifetime (nom.)	70 %			

CorePro LED tube Universal T8

Controls and dimming

Dimmable	No
----------	----

Mechanical and housing

Lamp Finish	Frosted
Bulb material	Glass
Product length	1,200 mm
Bulb shape	Tube, double-ended

Approval and application

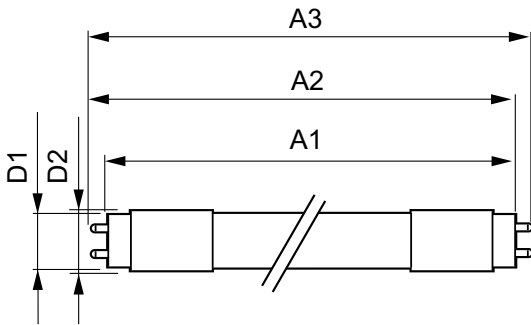
Energy Efficiency Class	E
Energy-saving product	Yes
Approval marks	RoHS compliance TUV CE marking KEMA Keur certificate
Energy consumption kWh/1,000 hours	18 kWh

EPREL registration number	1315788
CE mark	Yes
EU RoHS compliant	Yes

Product data

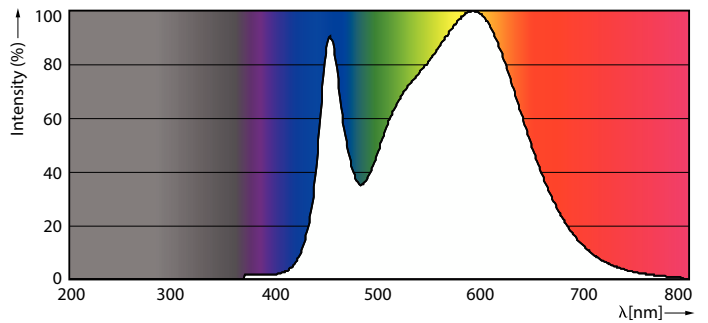
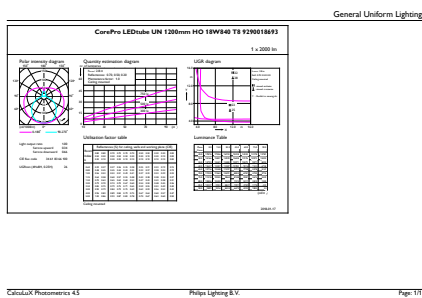
Full EOC	871869680168000
Order product name	CorePro LEDtube UN 1200mm HO 18W840 T8
Order code	80168000
SAP numerator – quantity per pack	1
Numerator – packs per outer box	10
Material number (12NC)	929001869302
Full product name	CorePro LEDtube UN 1200mm HO 18W840 T8
EAN/UPC - Case	8718696801697

Dimensional drawing



Product	D1	D2	A1	A2	A3
CorePro LEDtube UN 1200mm HO 18W840 T8	27.9 mm	28 mm	1,199.4 mm	1,205.3 mm	1,213.6 mm

Photometric data

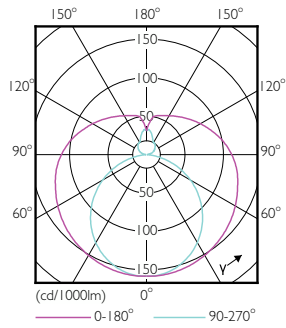


General uniform lighting - CorePro LEDtube UN 1200mm HO 18W840 T8

Spectral Power Distribution Colour - CorePro LEDtube UN 1200mm HO 18W840 T8

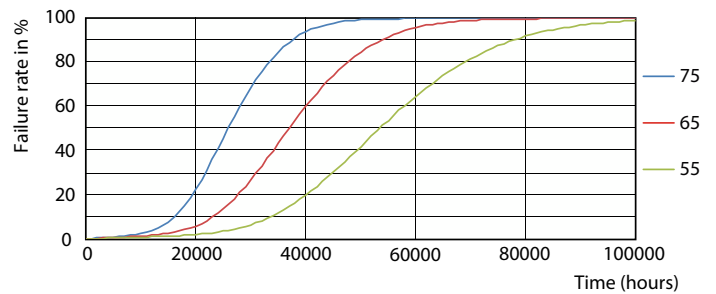
CorePro LED tube Universal T8

Photometric data



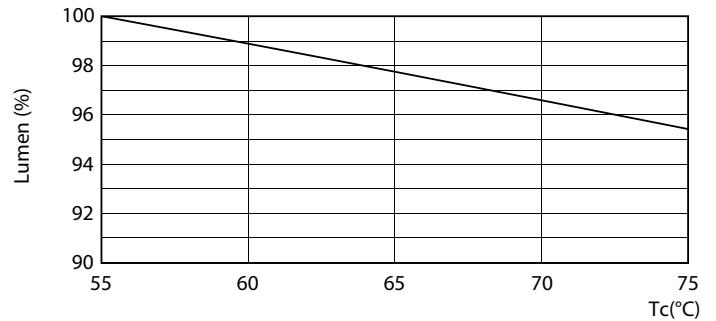
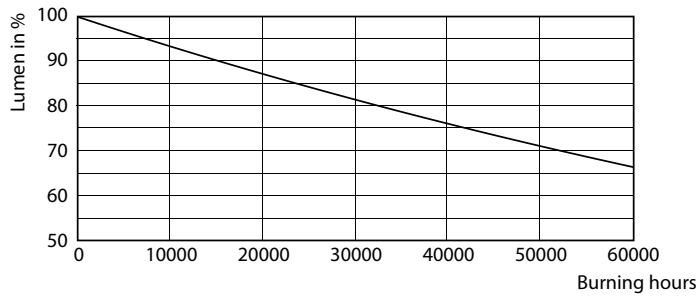
Light Distribution Diagram

Lifetime



Life Expectancy Diagram - CorePro LEDtube UN 1200mm HO 18W840 T8

Life Expectancy Diagram

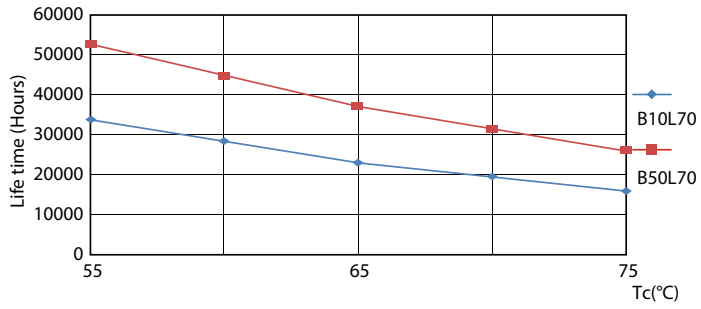


Lumen Maintenance Diagram - CorePro LEDtube UN 1200mm HO 18W840 T8

Lumen Maintenance Diagram

CorePro LED tube Universal T8

Lifetime



Life Expectancy Diagram

