



# CorePro LEDtube EM/ Mains



## CorePro LEDtube 600mm 8W 840 T8

The CorePro LEDtube is an affordable LED solution suitable for replacing T8 fluorescent lamps. The product provides a natural lighting effect for use in general lighting applications, as well as instant energy savings – an environmentally friendly solution.

### Warnings and Safety

• -

### Product data

General information		Stroboscopic effect	
Lighting Technology	LED		0.9
Flux measurement reference	Sphere	Operating and electrical	
Switching Cycle	200,000	Line Frequency	50 to 60 Hz
Nominal lifetime	50,000 h	Input frequency	50 to 60 Hz
Cap base	G13 [Medium Bi-Pin Fluorescent]	Power Consumption	8 W
Light technical		Lamp current (nom.)	46 mA
Colour Code	840 [CCT of 4000K]	Starting time (nom.)	0.5 s
Beam angle (nom.)	240 degree(s)	Warm-up time to 60% light	0.5 s
Luminous Flux	800 lm	Power Factor (Fraction)	0.9
Colour designation	Cool White (CW)	Voltage (nom.)	220–240 V
Correlated Colour Temperature	4000 K	Temperature	
Luminous Efficacy (rated) (Nom)	100 lm/W	Ambient temperature range	-20°C to 45°C
Colour consistency	<6	T-Case maximum (nom.)	50 °C
Colour rendering index (CRI)	80		
LLMF at end of nominal lifetime (nom.)	70 %		
Flickering value (PstLM)	1		

# CorePro LEDtube EM/Mains

## Controls and dimming

Dimmable	No
----------	----

## Mechanical and housing

Lamp Finish	Frosted
Bulb material	Glass
Product length	600 mm
Bulb shape	Tube, double-ended

## Approval and application

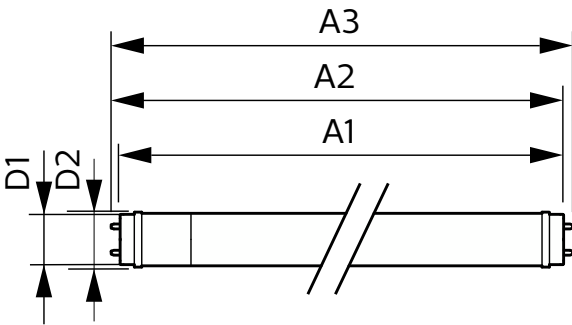
Energy Efficiency Class	F
Energy-saving product	Yes
Approval marks	RoHS compliance CE marking KEMA Keur certificate
Energy consumption kWh/1,000 hours	8 kWh

EPREL registration number	1384716
CE mark	Yes
EU RoHS compliant	Yes

## Product data

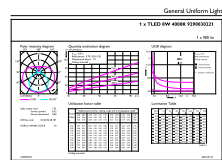
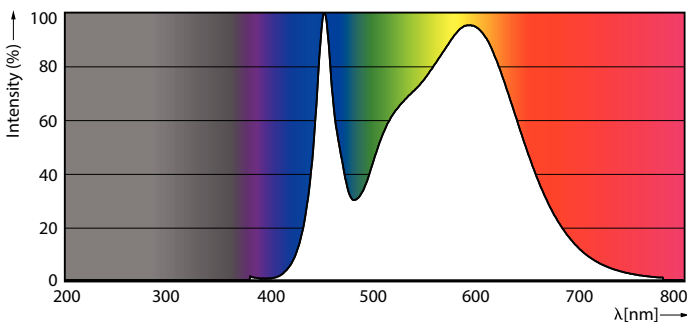
Full EOC	871951432531900
Order product name	CorePro LEDtube 600mm 8W 840 T8
Order code	32531900
SAP numerator – quantity per pack	1
Numerator – packs per outer box	10
Material number (12NC)	929003022102
Full product name	CorePro LEDtube 600mm 8W 840 T8
EAN/UPC - Case	8719514325326

## Dimensional drawing



Product	D1	D2	A1	A2	A3
CorePro LEDtube 600mm 8W 840 T8	25.7 mm	28 mm	588.5 mm	595.5 mm	602.5 mm

## Photometric data

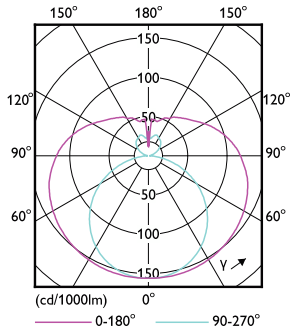


Spectral Power Distribution Colour - CorePro LEDtube 600mm 8W 840 T8

General uniform lighting - CorePro LEDtube 600mm 8W 840 T8

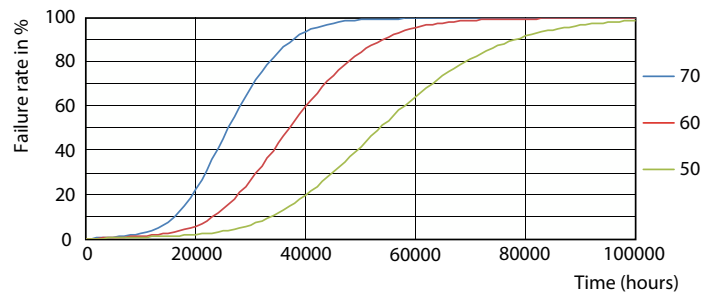
# CorePro LEDtube EM/Mains

## Photometric data



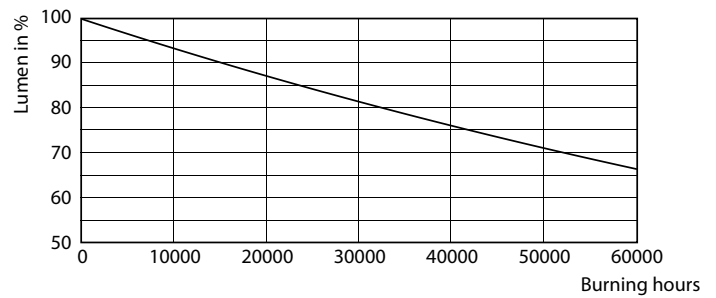
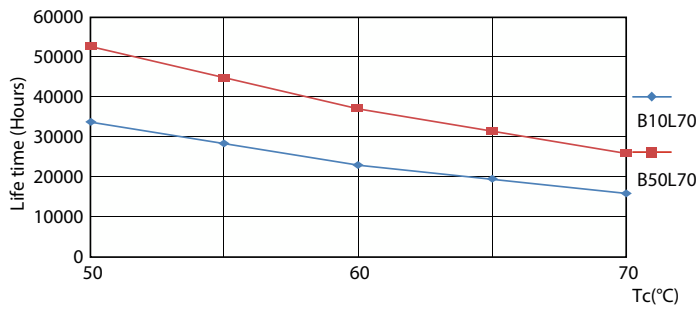
Light Distribution Diagram - CorePro LEDtube 600mm 8W 840 T8

## Lifetime



Life Expectancy Diagram - CorePro LEDtube 600mm 8W 840 T8

Life Expectancy Diagram - CorePro LEDtube 600mm 8W 840 T8



Life Expectancy Diagram - CorePro LEDtube 600mm 8W 840 T8

Lumen Maintenance Diagram - CorePro LEDtube 600mm 8W 840 T8

## CorePro LEDtube EM/Mains

