



CorePro LEDtube EM/ Mains



CorePro LEDtube 1200mm 15.5W 840 T8

The CorePro LEDtube is an affordable LED solution suitable for replacing T8 fluorescent lamps. The product provides a natural lighting effect for use in general lighting applications, as well as instant energy savings – an environmentally friendly solution.

Warnings and Safety

• -

Product data

General information		Stroboscopic effect	
Lighting Technology	LED		0.9
Flux measurement reference	Sphere	Operating and electrical	
Switching Cycle	200,000	Line Frequency	50 to 60 Hz
Nominal lifetime	50,000 h	Input frequency	50 to 60 Hz
Cap base	G13 [Medium Bi-Pin Fluorescent]	Power Consumption	15.5 W
Light technical		Lamp current (nom.)	84 mA
Colour Code	840 [CCT of 4000K]	Starting time (nom.)	0.5 s
Beam angle (nom.)	240 degree(s)	Warm-up time to 60% light	0.5 s
Luminous Flux	1,800 lm	Power Factor (Fraction)	0.9
Colour designation	Cool White (CW)	Voltage (nom.)	220–240 V
Correlated Colour Temperature	4000 K	Temperature	
Luminous Efficacy (rated) (Nom)	116 lm/W	Ambient temperature range	-20°C to 45°C
Colour consistency	<6	T-Case maximum (nom.)	50 °C
Colour rendering index (CRI)	80		
LLMF at end of nominal lifetime (nom.)	70 %		
Flickering value (PstLM)	1		

CorePro LEDtube EM/Mains

Controls and dimming

Dimmable	No
----------	----

Mechanical and housing

Lamp Finish	Frosted
Bulb material	Glass
Product length	1,200 mm
Bulb shape	Tube, double-ended

Approval and application

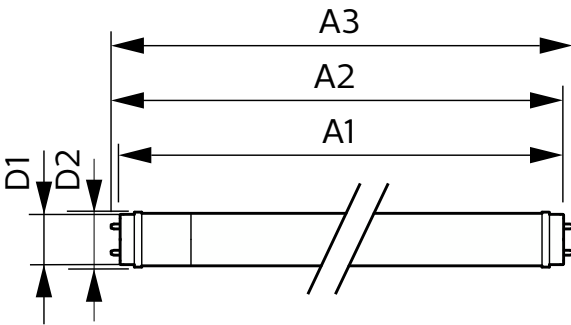
Energy Efficiency Class	E
Energy-saving product	Yes
Approval marks	RoHS compliance CE marking KEMA Keur certificate
Energy consumption kWh/1,000 hours	16 kWh

EPREL registration number	1384728
EU RoHS compliant	Yes

Product data

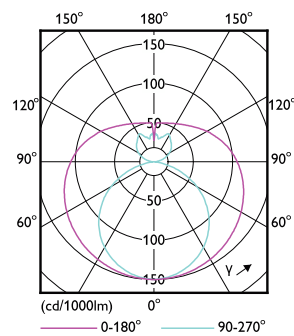
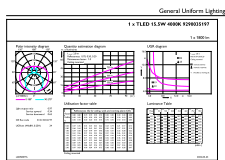
Full EOC	871951446954900
Order product name	CorePro LEDtube 1200mm 15.5W 840 T8
Order code	46954900
SAP numerator – quantity per pack	1
Numerator – packs per outer box	10
Material number (12NC)	929003519732
Full product name	CorePro LEDtube 1200mm 15.5W 840 T8
EAN/UPC - Case	8719514469556

Dimensional drawing



Product	D1	D2	A1	A2	A3
CorePro LEDtube 1200mm 15.5W 840 T8	25.7 mm	28 mm	1,198 mm	1,205 mm	1,212 mm

Photometric data

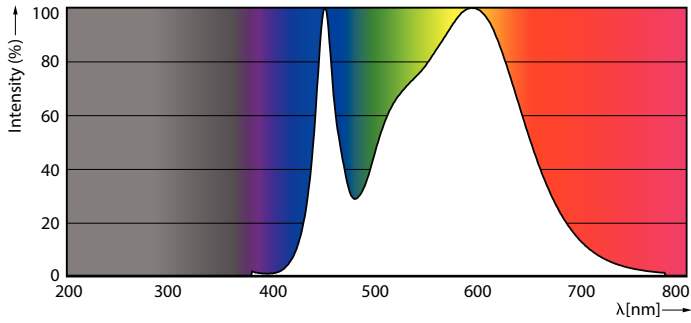


General uniform lighting - CorePro LEDtube 1200mm 15.5W 840 T8

Light Distribution Diagram - CorePro LEDtube 1200mm 15.5W 840 T8

CorePro LEDtube EM/Mains

Photometric data

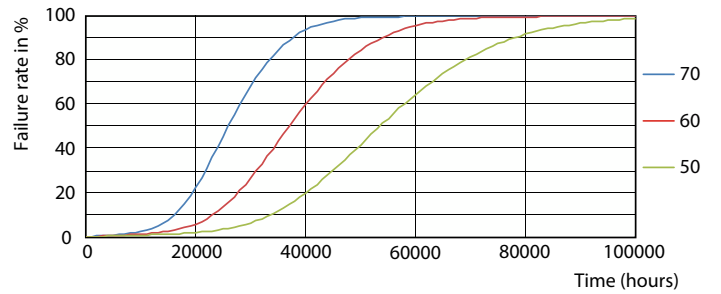


Spectral Power Distribution Colour - CorePro LEDtube 1200mm 15.5W 840 T8

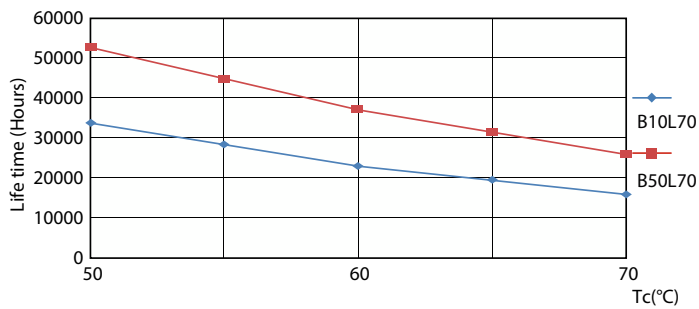
Lifetime



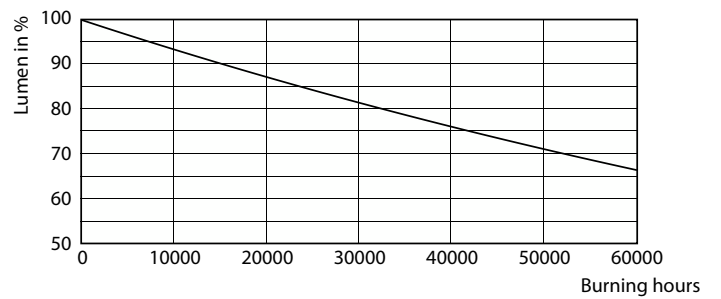
Life Expectancy Diagram - CorePro LEDtube 1200mm 15.5W 840 T8



Life Expectancy Diagram - CorePro LEDtube 1200mm 15.5W 840 T8



Life Expectancy Diagram - CorePro LEDtube 1200mm 15.5W 840 T8



Lumen Maintenance Diagram - CorePro LEDtube 1200mm 15.5W 840 T8

CorePro LEDtube EM/Mains

