

Automotive EV Fuse Links multicomp^{PRO}



RoHS
Compliant

Description

These series EV fuses are specially engineered and tested to provide best-in-class protection performance in protecting high power battery charging and managing systems of Electrical Vehicles and Hybrid Electrical Vehicles, up to 1000V DC In ratings from 70A to 800A.

Features

- Reliable clearing of DC fault currents
- High cycling performance
- Low watt losses
- Ultra-compact size and power density
- High breaking capacity to 50kA
- Operation as low as 135% for 70A to 200A and 200% for 225A to 800A In overload protection
- Full coverage of battery module current
- QR code marks on each fuse for traceability

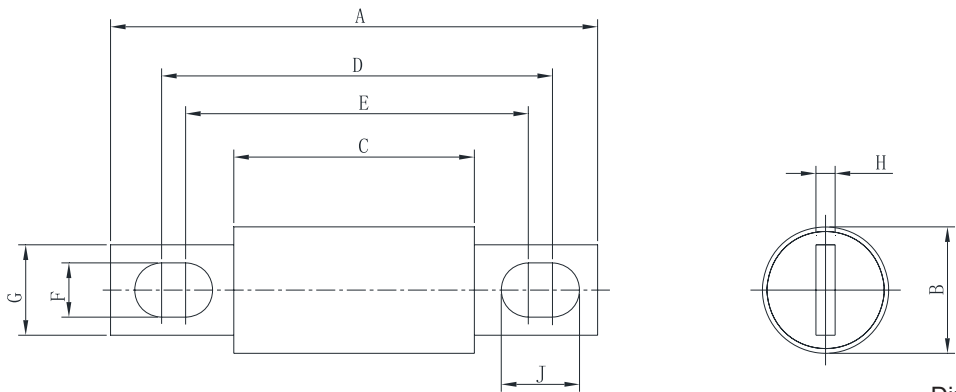
Application

- Battery Charging Protection

Agency Information

- Designed to JASO D622, ISO 8820-8, UL248-20, IEC60269-7, UL248-13, GB/T 13539-4
- UL, TUV, CCC certified (In progress)
- IATF 16949 quality system

Dimensions



Dimensions : Millimetres

Fuse Size	A ± 0.8mm	B ± 0.5mm	C ± 0.8mm	D ± 0.8mm	E ± 0.8mm	F ± 0.5mm	G ± 0.5mm	H ± 0.25mm	J ± 0.5mm
Φ25 × 72	111	25	72	95.1	88.1	8.5	15	3.2	12
Φ31 × 72	111	31		95.1	88.1	8.5	18	5	12
Φ38 × 72	129	38		107.1	89.1	8.5	22	6	12
Φ51 × 72	129	51		109.1	90.1	10.5	24.8	6	19.5
Φ64 × 72	122	64		101.5	92.5	10.5	38	10	15

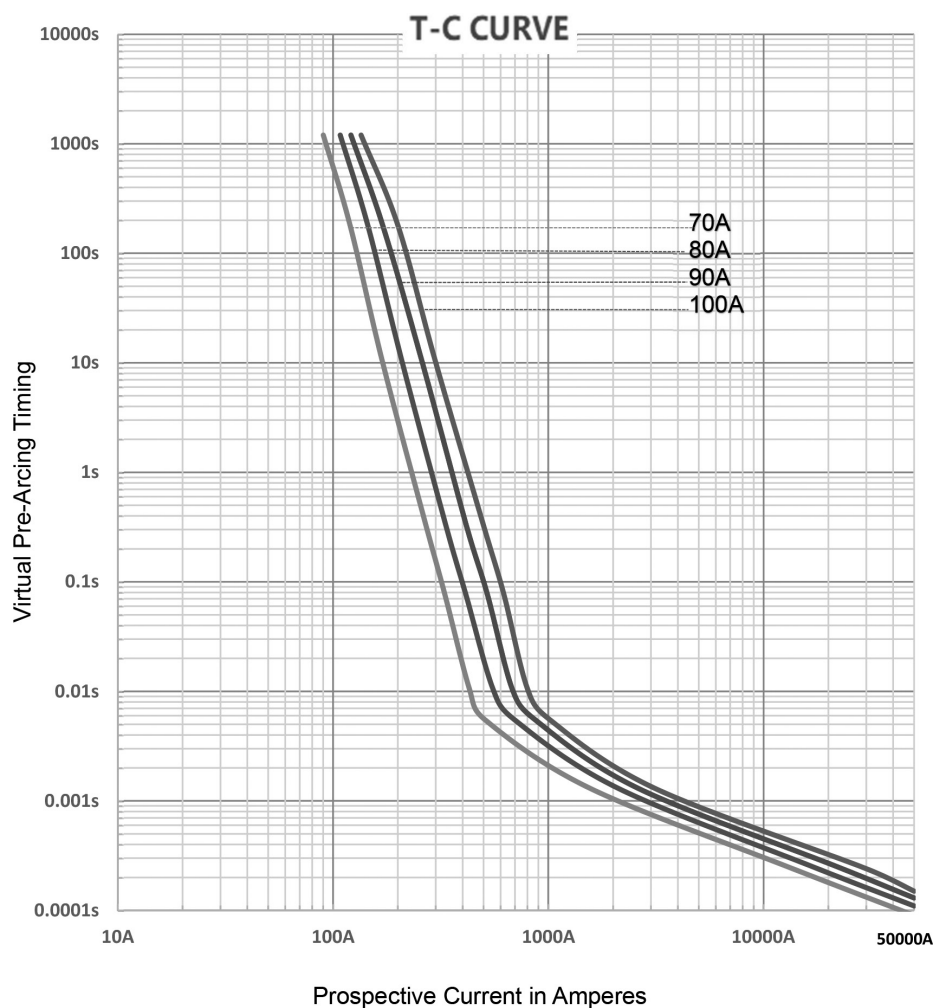
Automotive EV Fuse Links **multicomp**PRO

Specifications

Part Number	Rated Current	Ampere Code	Rated Voltage	Breaking Capacity			Melting I ² t (A ² s)	Clearing I ² t (A ² s)	Watt Loss (W) 0.5 In
				TUV	UL	Self-Certified			
MP012355	80A	2800	1000V DC	In progress		50kA	1290	4620	4.5
MP012356	100A	3100					2390	8160	5.8
MP012357	200A	3200					6259	20950	9
MP012358	300A	3300					14976	42190	15.9
MP012359	500A	3500					41590	119000	24.9

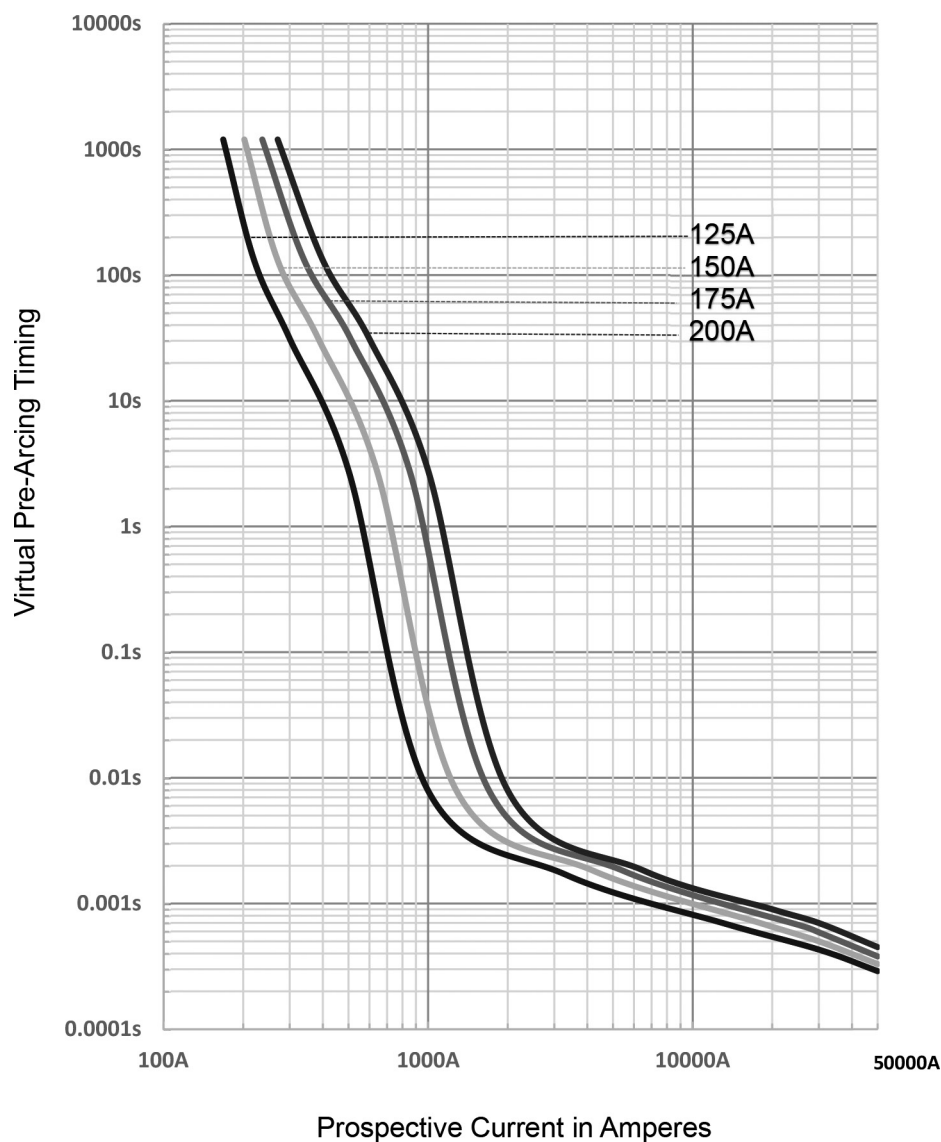
Time Current Curve

MP012355 / MP012356



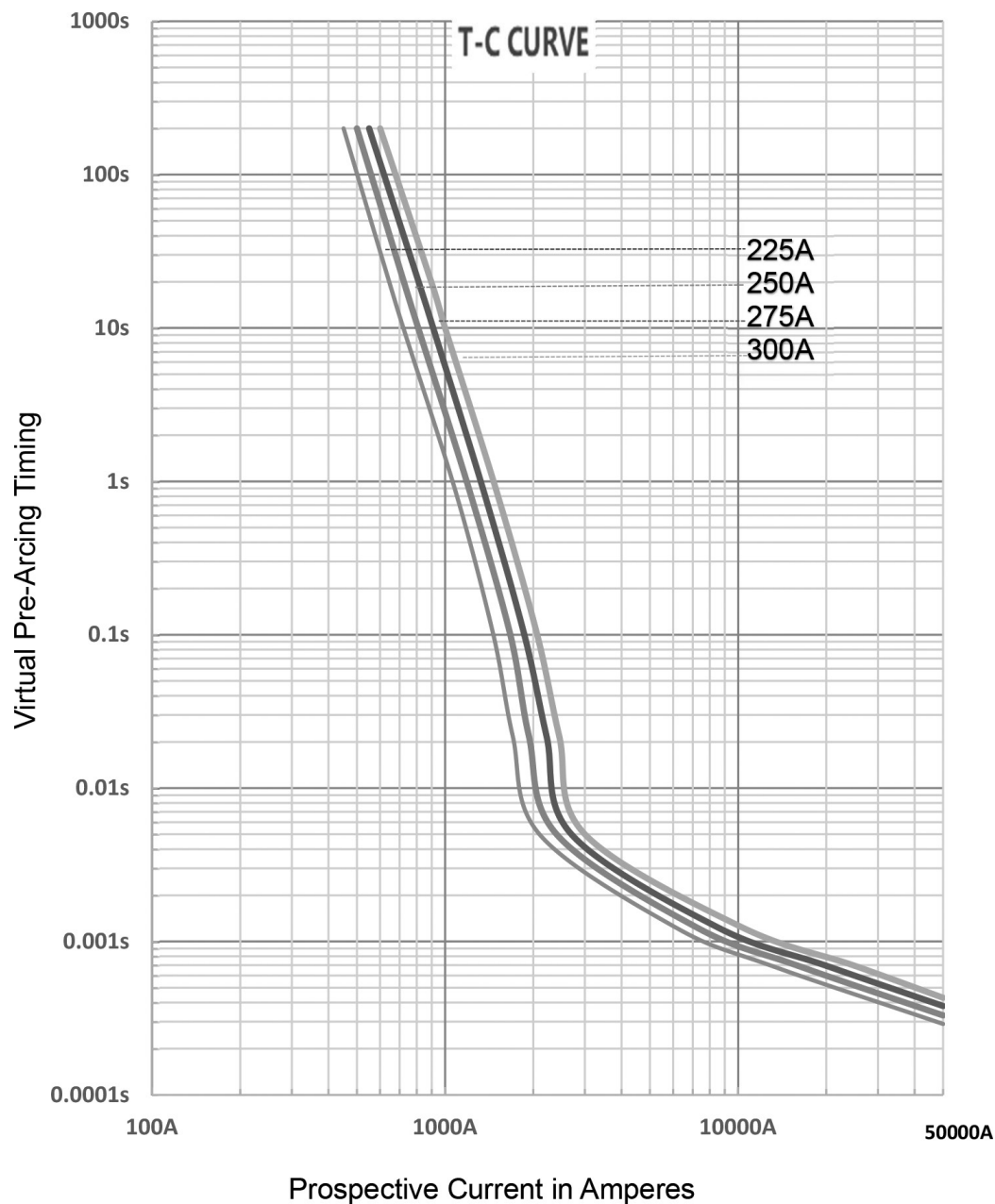
Automotive EV Fuse Links **multicomp**^{PRO}

MP012357



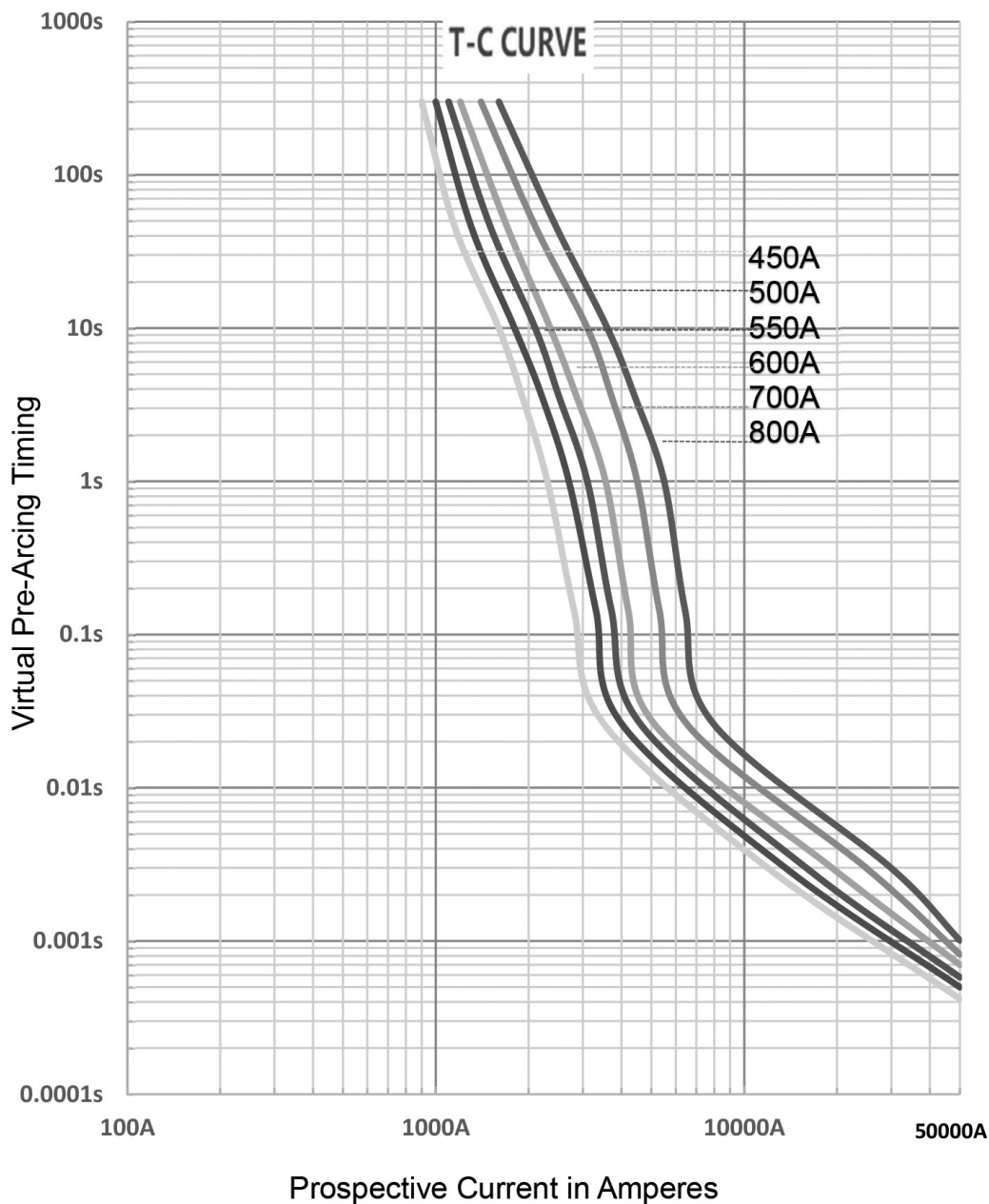
Automotive EV Fuse Links **multicomp**^{PRO}

MP012358



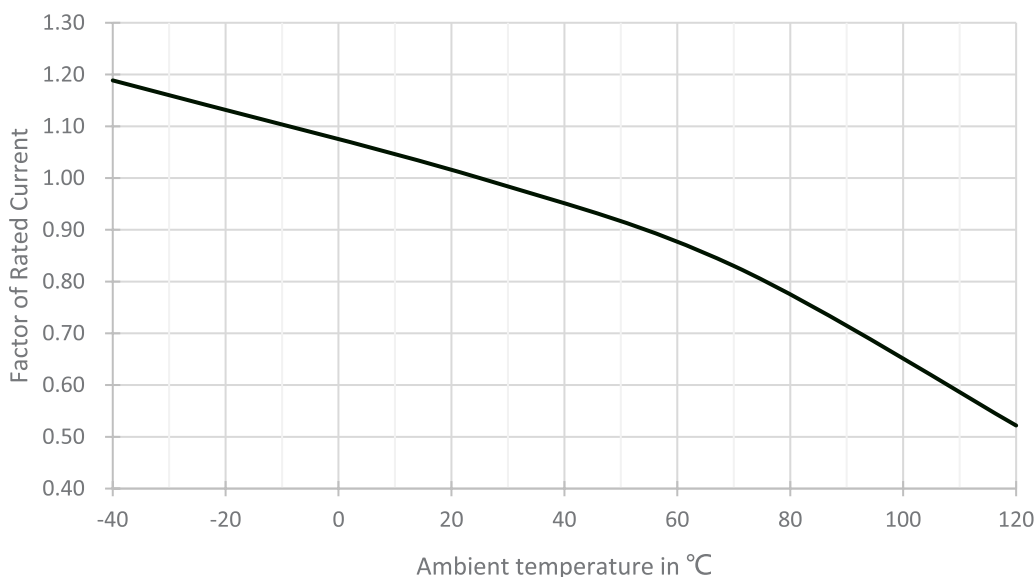
Automotive EV Fuse Links **multicomp**^{PRO}

MP012359



Automotive EV Fuse Links multicomp^{PRO}

Temperature derating curve



Part Number Table

Description	Part Number
Automotive Fuse, 80A, 1000V DC	MP012355
Automotive Fuse, 100A, 1000V DC	MP012356
Automotive Fuse, 200A, 1000V DC	MP012357
Automotive Fuse, 300A, 1000V DC	MP012358
Automotive Fuse, 500A, 1000V DC	MP012359
Automotive Fuse, 125A, 1000V DC	MP012572
Automotive Fuse, 150A, 1000V DC	MP012573
Automotive Fuse, 175A, 1000V DC	MP012574
Automotive Fuse, 250A, 1000V DC	MP012575
Automotive Fuse, 350A, 1000V DC	MP012576
Automotive Fuse, 400A, 1000V DC	MP012577
Automotive Fuse, 450A, 1000V DC	MP012578
Automotive Fuse, 600A, 1000V DC	MP012579
Automotive Fuse, 800A, 1000V DC	MP012580

Important Notice : This data sheet and its contents (the "Information") belong to the members of the AVNET group of companies (the "Group") or are licensed to it. No licence is granted for the use of it other than for information purposes in connection with the products to which it relates. No licence of any intellectual property rights is granted. The Information is subject to change without notice and replaces all data sheets previously supplied. The Information supplied is believed to be accurate but the Group assumes no responsibility for its accuracy or completeness, any error in or omission from it or for any use made of it. Users of this data sheet should check for themselves the Information and the suitability of the products for their purpose and not make any assumptions based on information included or omitted. Liability for loss or damage resulting from any reliance on the Information or use of it (including liability resulting from negligence or where the Group was aware of the possibility of such loss or damage arising) is excluded. This will not operate to limit or restrict the Group's liability for death or personal injury resulting from its negligence. Multicomp Pro is the registered trademark of Premier Farnell Limited 2019.