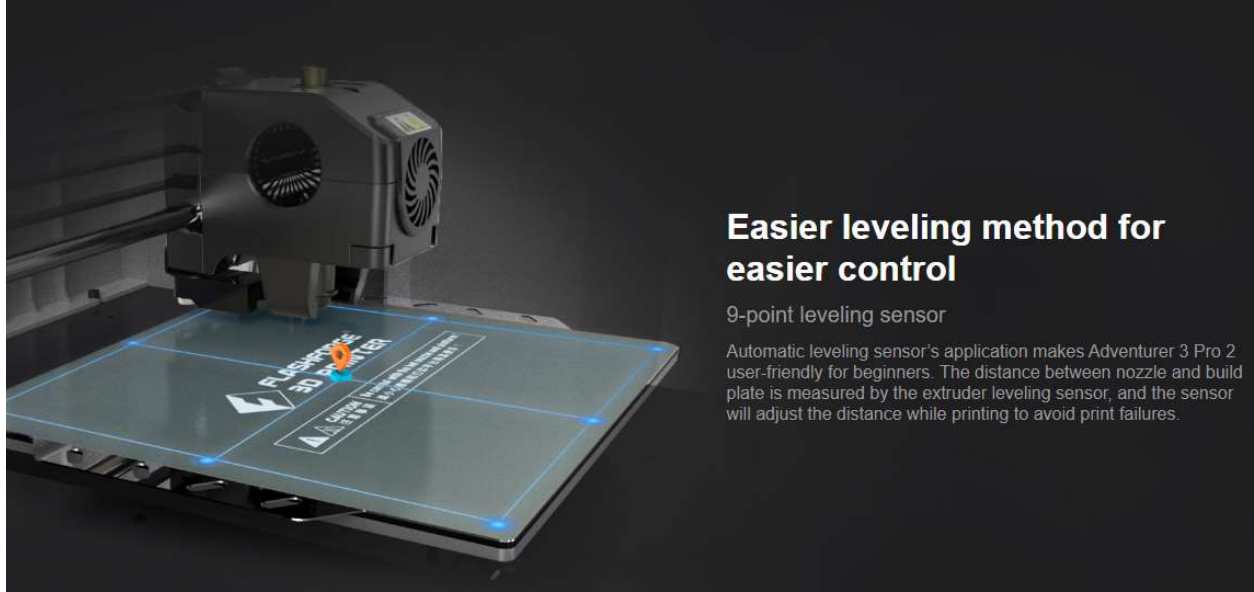


Adventurer 3 Pro 2 applies 3 fans and dual ducts to extruder structure. The design accelerates the cooling process while printing, which ensures better surface quality.

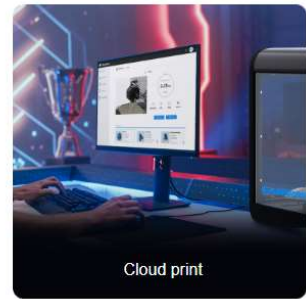
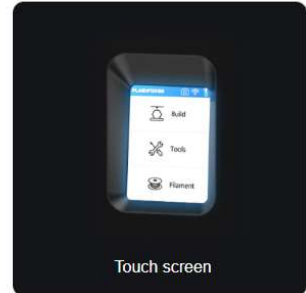
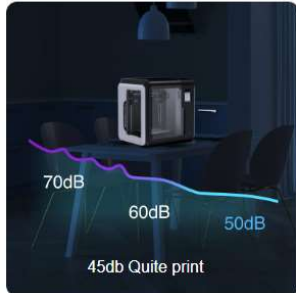


The hardened nozzle kit is coming with Adventurer 3 Pro 2! You can print carbon fiber filament as you wish. Filament compatibility: [PLA](#), [ABS](#), [PETG](#), carbon fiber filament.





A more comfortable experience



Print

- Extruder Quantity**1**
- Nozzle Diameter**0.4 mm (default), 0.6mm (optional)**
- Maximum Extruder Temperature**265 °C (509°F)**
- Maximum Platform Temperature**100 °C (212°F)**
- Print Speed**10-300 mm/s**
- Filament compatibility**PLA / ABS /PETG/ PLA CF/ PETG CF**
- Print Volume**150*150*150 mm (5.9x5.9x5.9 IN)**
- Layer Resolution**0.1-0.4 mm**
- Print Precision**±0.2 mm**

Mechanical&Dimension

- Printer Dimension**388*340*405 mm**
- Screen**2.8-inch Touch Screen**
- Net Weight**9 kg**
- Gross Weight**13 kg**
- Input**100-240 VAC, 47-63Hz**
- Output**24 V, 13.3 A**
- Power**320 W**
- Spool Hold Diameter**52 mm**
- Contain Spool Diameter**50*200d*52h**
- Internal Storage**8G**

Electrical

- Connectivity**USB stick, Wi-Fi, Ethernet FlashCloud**
- Software**FlashPrint, Cura, Slic3r**
- Input**3mf / stl / obj / fpp / bmp / png jpg / jpeg files**
- Output**gx/g files**

Others

- Camera**1**
- Noise**<45dB**
- Working Environment**15-30 °C**

Video Link : -

<https://youtu.be/6cTOffPmvyM>

