



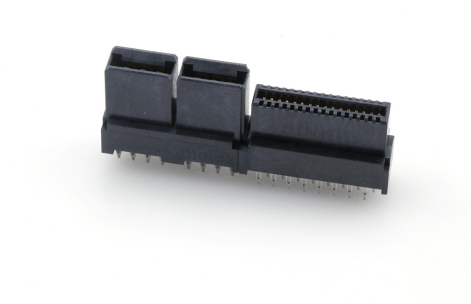
Part Number : [461144321](#)

Product Description : 1.27mm, 12.00mm Pitch, EXTreme LPHPower Receptacle Header, Vertical, 4 Power Contacts, 32 Signal Contacts, Select Gold (Au) Plating, without BMI Guides

Series Number : 46114

Status : Active

Product Category : Board-to-Board Connectors



Documents & Resources

Drawings

[Drawing 461144321_sd.pdf](#)
[Packaging Design Drawing PK-46114-003-001.pdf](#)

3D Models and Design Files

[3D Model 461144321_stp.zip](#)
[3D Model PDF 461144321.pdf](#)
[Symbol Footprint Data SYM-46114-4321-001.zip](#)

Specifications

[Application Specification AS-46114-001-001.pdf](#)
[Product Specification PS-46114-001-001.pdf](#)

Product Environment Compliance

Compliance

GADSL/IMDS	Not Relevant
China RoHS	
EU ELV	Not Relevant
Low-Halogen Status	Low-Halogen per IEC 61249-2-21
REACH SVHC	Not Contained per D(2023)3788-DC (14 Jun 2023)
EU RoHS	Compliant per EU 2015/863

Multiple Part Product Compliance Statements

- Eu RoHS
- REACH SVHC
- Low-Halogen

Multiple Part Industry Compliance Documents

- IPC 1752A Class C
- IPC 1752A Class D
- Molex Product Compliance Declaration
- IEC-62474
- chemSHERPA (xml)

EU RoHS Certificate of Compliance

Part Details

General

Status	Active
Category	Board-to-Board Connectors
Series	46114
Description	1.27mm, 12.00mm Pitch, EXTreme LPHPower Receptacle Header, Vertical, 4 Power Contacts, 32 Signal Contacts, Select Gold (Au) Plating, without BMI Guides
Application	Board-to-Board, Power
Comments	Press Fit Pin
Component Type	PCB Receptacle
Product Family	EXTreme LPHPower Connectors
Product Name	EXTreme LPHPower
UPC	756054923146

Agency

CSA	LR19880
UL	E29179

Electrical

Current - Maximum per Contact	30.0A
Grounding to PCB	No
Voltage - Maximum	250V AC (RMS)/DC

Physical

Circuits (Loaded)	36
Circuits (maximum)	36

Color - Resin	Black
Durability (mating cycles max)	250
Flammability	94V-0
Glow-Wire Capable	No
Guide to Mating Part	No
Keying to Mating Part	None
Lock to Mating Part	None
Material - Metal	High Performance Alloy (HPA)
Material - Plating Mating	Gold
Material - Plating Termination	Tin
Material - Resin	High Temperature Thermoplastic
Net Weight	7.532/g
Number of Rows	2
Orientation	Vertical
Packaging Type	Tube
PCB Locator	No
PCB Retention	None
Pitch - Mating Interface	1.27mm, 12.00mm
Pitch - Termination Interface	1.27mm, 2.50mm
Plating min - Mating	0.762µm
Plating min - Termination	2.540µm
Polarized to Mating Part	Yes
Polarized to PCB	Yes
(p)ower-(s)ignal Configuration	4p - 32s
Stackable	No
Temperature Range - Operating	-40° to +105°C
Termination Interface Style	Through Hole - Compliant Pin

Mates With / Use With

Mates with Part(s)

Description	Part Number
EXTreme LPHPower Right-Angle Plugs	<u>45985</u>

Application Tooling

Global

Description	Part Number
LPH Vertical Receptacle Power Terminal Removal Tool	<u>0621006300</u>
Vertical Receptacle Press-In Tool	<u>0622018672</u>