



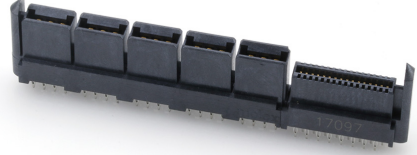
Part Number : [461141032](#)

Product Description : EXTreme LPHPower Header, Right-Angle, 6 Power Contacts, 16 Signal Contacts, Select Gold (Au) Plating, for 2.36mm Thick PC Board, with Guide Pockets, with Press-fit Plastic Pegs

Series Number : 45985

Status : Active

Product Category : Board-to-Board Connectors



Documents & Resources

Drawings

[Drawing 459856422_sd.pdf](#)

[Packaging Design Drawing PK-45984-001-001.pdf](#)

3D Models and Design Files

[3D Model 459856422_stp.zip](#)

[3D Model PDF 459856422.pdf](#)

[Symbol Footprint Data SYM-45985-6421-001.zip](#)

Specifications

[Product Specification PS-45984-001-001.pdf](#)

Product Environment Compliance

Compliance

GADSL/IMDS	Not Relevant
China RoHS	
EU ELV	Not Relevant
Low-Halogen Status	Low-Halogen per IEC 61249-2-21
REACH SVHC	Not Contained per D(2023)3788-DC (14 Jun 2023)
EU RoHS	Compliant per EU 2015/863

Multiple Part Product Compliance Statements

- Eu RoHS
- REACH SVHC
- Low-Halogen

Multiple Part Industry Compliance Documents

- IPC 1752A Class C
- IPC 1752A Class D
- Molex Product Compliance Declaration
- IEC-62474
- chemSHERPA (xml)

EU RoHS Certificate of Compliance

Part Details

General

Status	Active
Category	Board-to-Board Connectors
Series	45985
Description	EXTreme LPHPower Header, Right-Angle, 6 Power Contacts, 16 Signal Contacts, Select Gold (Au) Plating, for 2.36mm Thick PC Board, with Guide Pockets, with Press-fit Plastic Pegs
Application	Board-to-Board, Power
Component Type	PCB Header
Product Family	EXTreme LPHPower Connectors
Product Name	EXTreme LPHPower
UPC	822350778657

Agency

CSA	LR19980
UL	E29179

Electrical

Current - Maximum per Contact	27.0A
Voltage - Maximum	250V AC (RMS)/DC

Physical

Breakaway	No
Circuits (Loaded)	22
Circuits (maximum)	22
Color - Resin	Black

Durability (mating cycles max)	250
First Mate / Last Break	No
Flammability	94V-0
Glow-Wire Capable	No
Guide to Mating Part	Yes
Keying to Mating Part	None
Lock to Mating Part	No
Material - Metal	High Performance Alloy (HPA)
Material - Plating Mating	Gold
Material - Plating Termination	Tin
Material - Resin	High Temperature Thermoplastic
Net Weight	8.395/g
Number of Rows	2
Orientation	Right Angle
Packaging Type	Tray
PC Tail Length	3.60mm
PCB Locator	Yes
PCB Retention	Yes
PCB Thickness - Recommended	2.36mm
Pitch - Mating Interface	1.27mm, 12.00mm
Plating min - Mating	0.762μm
Plating min - Termination	3.810μm
Polarized to Mating Part	Yes
Polarized to PCB	Yes
(p)ower-(s)ignal Configuration	6p - 16s
Shrouded	Fully
Stackable	No
Temperature Range - Operating	-40° to +105°C
Termination Interface Style	Through Hole

Solder Process Data

Max-Duration	20
Lead-Free Process Capability	WAVE
Max-Cycle	3
Max-Temp	260

Mates With / Use With

Mates with Part(s)

Description	Part Number
EXTreme LPHPower Right-Angle PCB Receptacles	<u>45984</u>

Global

Description	Part Number
LPH Vertical Receptacle Power Terminal Removal Tool	<u>0621006300</u>
Vertical Receptacle Press-In Tool	<u>0622018672</u>

This document was generated on Aug 24, 2023