



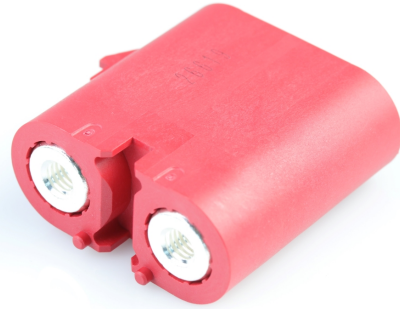
Part Number : [2119370002](#)

Product Description : PowerWize 6.00mm, 2-circuit, Screw Mount, Mechanical Keying Option A, Color Coded Red, Vertical Header in Tray

Series Number : 211937

Status : Active

Product Category : PCB Headers and Receptacles



Documents & Resources

Drawings

[Drawing 2119370002_sd.pdf](#)

[Packaging Design Drawing 2119370001-PK-000.pdf](#)

3D Models and Design Files

[3D Model PDF 2119370002.pdf](#)

[3D Model 2119370002_stp.zip](#)

Specifications


[Application Specification 2119410000-AS-000.pdf](#)

[Product Specification 2119410000-PS-000.pdf](#)

[Test Summary 2119410000-TS-000.pdf](#)

Product Environment Compliance

Compliance

GADSL/IMDS	Not Relevant
China RoHS	
EU ELV	Not Relevant
Low-Halogen Status	Not Low-Halogen per IEC 61249-2-21
REACH SVHC	Not Contained per D(2023)3788-DC (14 Jun 2023)
EU RoHS	Compliant per EU 2015/863

[Multiple Part Product Compliance Statements](#)

- Eu RoHS

- REACH SVHC

- Low-Halogen

Multiple Part Industry Compliance Documents

- IPC 1752A Class C
- IPC 1752A Class D
- Molex Product Compliance Declaration
- IEC-62474
- chemSHERPA (xml)

EU RoHS Certificate of Compliance

Part Details

General

Status	Active
Category	PCB Headers and Receptacles
Series	211937
Description	PowerWize 6.00mm, 2-circuit, Screw Mount, Mechanical Keying Option A, Color Coded Red, Vertical Header in Tray
Application	Power, Wire-to-Board, Wire-to-Busbar
Component Type	PCB Header
Product Family	PowerWize High-Current Wire-to-Board/Wire-to-Busbar Connectors
Product Name	PowerWize
UPC	193264140541

Electrical

Current - Maximum per Contact	120.0A
Voltage - Maximum	300V

Physical

Breakaway	No
Circuits (Loaded)	2
Circuits (maximum)	2
Color - Resin	Red
Diameter	6.00mm
Durability (mating cycles max)	200

Glow-Wire Capable	No
Keying to Mating Part	Yes
Lock to Mating Part	Yes
Material - Metal	Copper Alloy
Material - Plating Mating	Silver
Material - Plating Termination	Silver
Material - Resin	PBT
Net Weight	42.935/g
Number of Rows	1
Orientation	Vertical
Packaging Type	Tray
Pitch - Mating Interface	19.06mm
Polarized to Mating Part	Yes
Polarized to PCB	Yes
Temperature Range - Operating	-40° to +125°C
Termination Interface Style	Screw Mount

Mates With / Use With

Mates with Part(s)

Description	Part Number
PowerWize 6.00mm, 2-circuit, Mechanical Keying Option A, Color Coded Red, Receptacle Housing in Bag	<u>2119420002</u>