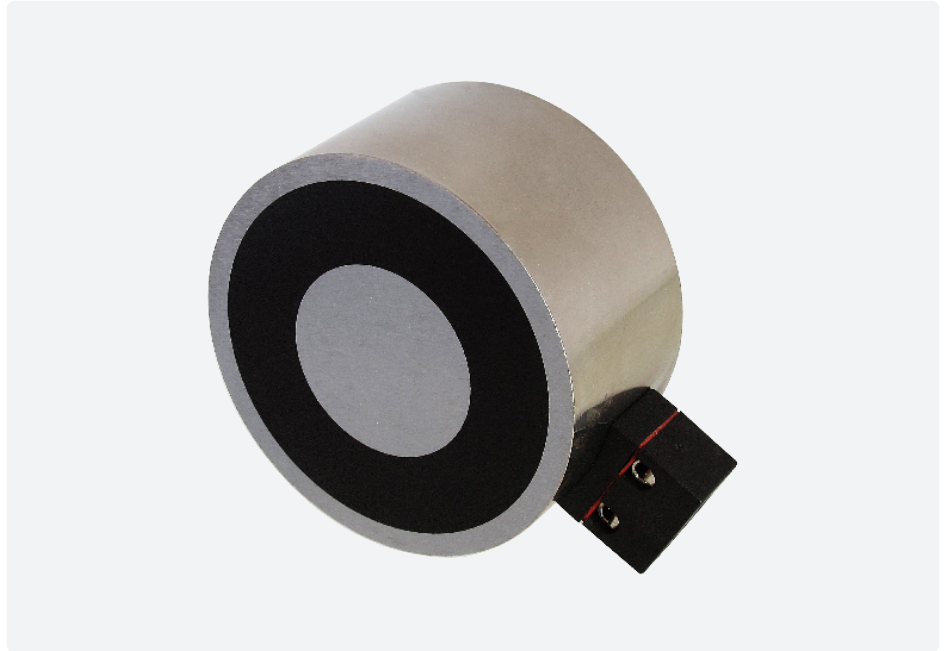


Electro-Holding Magnet: 80mm

Energise To Hold ElectroMagnet

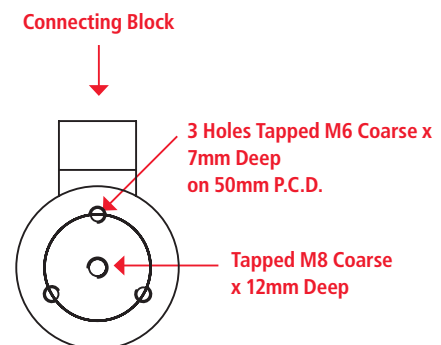
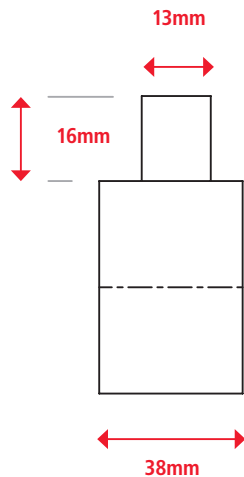
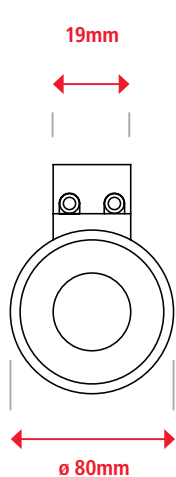
Technical Data

Mountings	Threaded holes in rear face
Finish	Bright nickel-plated with machined face
Weight	1203g
Typical Holding Force	228.0kg
ED Rating	100%
IP Rating	20
Standard Operating Voltage	12VDC M52183/12VDC 24VDC M52183/24VDC
Current	12V - 1116mA 24V - 580mA
Typical Power	13.4 - 13.9W
Connection Type	12VDC & 24VDC Two-pole connector



Recommended Armature Plate

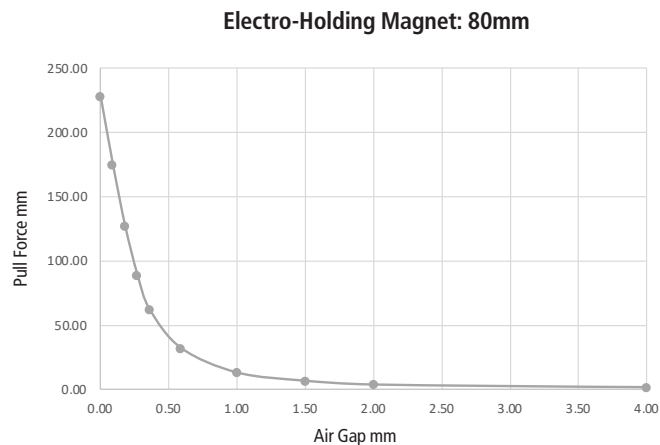
Finish	Bright nickel-plated
Diameter	80mm
Height	10mm
Screw	M6
Part Number	M52171/80ARM
Weight	400g



Electro-Holding Magnet: 80mm

Energise To Hold ElectroMagnet

Air Gap (mm)	Pull Force* (kg)
0.00	228.00
0.09	175.00
0.18	127.00
0.27	89.00
0.36	62.00
0.50	32.00
1.00	13.00
1.50	6.60
2.00	3.65
4.00	1.60
6.00	1.10
8.00	0.90



*** +/- 10% at room temperature**

To achieve the optimum pull force 100% contact area must be achieved using the recommended armature plate. The force will be affected if other material specifications, thicknesses and surfaces are used, or if the armature fails to make positive contact over the full diameter of the face of the magnet.

Where misalignment is likely to be an issue we recommend that an oversized armature plate is used to ensure 100% full contact, this however will reduce the stated pull force by approximately 10%.