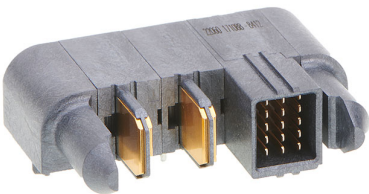




Part Number : [1710888412](#)
Product Description : EXTreme Ten60Power
Right-Angle Plug with Guides, 2 Split Power
Circuits, 15 Signal Circuits, Press Fit Tail
Series Number : 171088
Status : Active
Product Category : Board-to-Board
Connectors
Engineering Number : 171088-8402



Documents & Resources

Drawings

[Drawing 1710888412_sd.pdf](#)

3D Models and Design Files

[3D Model PDF 1710888412.pdf](#)


[3D Model 1710888412_stp.zip](#)

Specifications

[Product Specification PS-171088-0000-001.pdf](#)

Product Environment Compliance

Compliance

GADSL/IMDS	Compliant with Exemption 44; 34; 33
China RoHS	
EU ELV	Not Relevant
Low-Halogen Status	Low-Halogen per IEC 61249-2-21
REACH SVHC	Not Contained per D(2023)3788-DC (14 Jun 2023)
EU RoHS	Compliant per EU 2015/863

[Multiple Part Product Compliance Statements](#)

- Eu RoHS
- REACH SVHC

- Low-Halogen

Multiple Part Industry Compliance Documents

- IPC 1752A Class C
- IPC 1752A Class D
- Molex Product Compliance Declaration
- IEC-62474
- chemSHERPA (xml)

EU RoHS Certificate of Compliance

Part Details

General

Status	Active
Category	Board-to-Board Connectors
Series	171088
Description	EXTreme Ten60Power Right-Angle Plug with Guides, 2 Split Power Circuits, 15 Signal Circuits, Press Fit Tail
Application	Board-to-Board, Power, Signal
Component Type	PCB Header
Product Family	EXTreme Ten60 High-Power Connectors
Product Name	EXTreme Ten60Power
UPC	195842726895

Electrical

Current - Maximum per Contact	2.5A, 30.0A
Voltage - Maximum	600V

Physical

Breakaway	No
Circuits (Loaded)	17
Circuits (maximum)	17
Color - Resin	Black
Durability (mating cycles max)	200
First Mate / Last Break	No
Glow-Wire Capable	No

Guide to Mating Part	Side, Yes
Keying to Mating Part	None
Lock to Mating Part	No
Mated Height	10.00mm
Material - Metal	High Conductivity Copper
Material - Plating Mating	Gold
Material - Plating Termination	Tin
Material - Resin	Liquid Crystal Polymer
Net Weight	12.095/g
Number of Rows	1, 5
Orientation	Right Angle
Packaging Type	Tray
PC Tail Length	2.50mm, 3.28mm
PCB Locator	Yes
PCB Retention	None
PCB Thickness - Recommended	1.58mm
Pitch - Mating Interface	2.00mm, 8.00mm
Polarized to Mating Part	Yes
Polarized to PCB	Yes
(p)ower-(s)ignal Configuration	2sp - 15s
Shrouded	No
Stackable	No
Temperature Range - Operating	-40° to +105°C
Termination Interface Style	Through Hole - Compliant Pin

Mates With / Use With

Mates with Part(s)

Description	Part Number
EXTreme Ten60Power Vertical Receptacle with Guides, 2 Split Power Circuits, 15 Signal Circuits, Press Fit Tail	<u>1710898412</u>
EXTreme Ten60Power Right-Angle Receptacle with Guides, 2 Split Power Circuits, 15 Signal Circuits, Press Fit Tail	<u>1710908412</u>

This document was generated on Sep 06, 2023