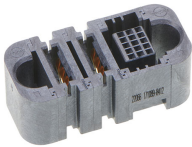




**Part Number :** [1710898412](#)  
**Product Description :** EXTreme Ten60Power  
Vertical Receptacle with Guides, 2 Split Power  
Circuits, 15 Signal Circuits, Press Fit Tail  
**Series Number :** 171089  
**Status :** Active  
**Product Category :** Board-to-Board  
Connectors



## Documents & Resources


**Drawings**  
[Drawing 1710898412\\_sd.pdf](#)  
[Packaging Design Drawing 1710891001-PK-000.pdf](#)

**3D Models and Design Files**  
[3D Model PDF 1710898412.pdf](#)  
[3D Model 1710898412\\_stp.zip](#)

**Specifications**  
[Product Specification PS-171088-0000-001.pdf](#)

## Product Environment Compliance

### Compliance

GADSL/IMDS	Compliant with Exemption 44; 34; 33
China RoHS	
EU ELV	Not Relevant
Low-Halogen Status	Low-Halogen per IEC 61249-2-21
REACH SVHC	Not Contained per D(2023)3788-DC (14 Jun 2023)
EU RoHS	Compliant per EU 2015/863

[Multiple Part Product Compliance Statements](#)  
- Eu RoHS  
- REACH SVHC  
- Low-Halogen

[Multiple Part Industry Compliance Documents](#)

- IPC 1752A Class C
- IPC 1752A Class D
- Molex Product Compliance Declaration
- IEC-62474
- chemSHERPA (xml)

## EU RoHS Certificate of Compliance

---

### Part Details

#### General

Status	Active
Category	Board-to-Board Connectors
Series	171089
Description	EXTreme Ten60Power Vertical Receptacle with Guides, 2 Split Power Circuits, 15 Signal Circuits, Press Fit Tail
Application	Board-to-Board, Power, Signal
Component Type	PCB Receptacle
Product Family	EXTreme Ten60 High-Power Connectors
Product Name	EXTreme Ten60Power
UPC	195842734029

#### Agency

UL	E29179
----	--------

#### Electrical

Current - Maximum per Contact	2.5A, 30.0A
Voltage - Maximum	600V

#### Physical

Circuits (Loaded)	17
Circuits (maximum)	17
Color - Resin	Black
Durability (mating cycles max)	200
Flammability	94V-0
Glow-Wire Capable	No

Guide to Mating Part	Side, Yes
Keying to Mating Part	None
Lock to Mating Part	No
Mated Height	16.13mm
Material - Metal	High Conductivity Copper
Material - Plating Mating	Gold
Material - Plating Termination	Tin
Material - Resin	Liquid Crystal Polymer
Net Weight	11.018/g
Number of Rows	1, 5
Orientation	Vertical
Packaging Type	Tray
PC Tail Length	2.50mm, 2.83mm
PCB Locator	No
PCB Retention	None
PCB Thickness - Recommended	1.58mm
Pitch - Mating Interface	2.00mm, 8.00mm
Polarized to Mating Part	Yes
Polarized to PCB	Yes
(p)ower-(s)ignal Configuration	2sp - 15s
Stackable	No
Temperature Range - Operating	-40° to +105°C
Termination Interface Style	Through Hole - Compliant Pin

---

## Mates With / Use With

### Mates with Part(s)

Description	Part Number
EXTreme Ten60Power Right-Angle Plug with Guides, 2 Split Power Circuits, 15 Signal Circuits, Press Fit Tail	<u>1710888412</u>