



CorePro LED PLL



CorePro LED PLL EM/Mains 16.5W 830 4P

Philips CorePro LED PLL is the ideal uplamping solution for downlights & luminaires in a wide range of general lighting applications. It integrates a LED light source into a traditional fluorescent form factor to offer superb energy savings over a lifetime that's twice as long as fluorescent alternatives.

Product data

General Information		Input frequency	
Cap base	2G11 [2G11]		50 to 60 Hz
Nominal lifetime	30,000 h	Power Consumption	16.5 W
Switching Cycle	200,000	Lamp current (nom.)	83 mA
Lighting Technology	LED	Starting time (nom.)	0.5 s
Flux measurement reference	Sphere	Warm-up time to 60% light	0.5 s
		Power Factor (Fraction)	0.9
		Voltage (nom.)	220-240 V
		LED alternative to fluorescent lamp power	36 W
Light Technical		Temperature	
Colour Code	830 [CCT of 3000K]	Ambient temperature range	-20°C to 45°C
Beam angle (nom.)	160 degree(s)	T-Case maximum (nom.)	70 °C
Luminous Flux	2,000 lm		
Colour designation	White (WH)	Controls and Dimming	
Correlated Colour Temperature	3000 K	Dimmable	No
Luminous efficacy (rated) (nom.)	121 lm/W		
Colour consistency	<6	Mechanical and Housing	
Colour rendering index (CRI)	80	Lamp Finish	Frosted
LLMF at end of nominal lifetime (nom.)	70 %	Bulb material	Glass
Flickering value (PstLM)	1	Product length	400 mm
Stroboscopic effect	0.4	Bulb shape	Tube, single-ended
Photobiological safety according to EN 62471	RG0		
Operating and Electrical			
Line Frequency	50 to 60 Hz		

CorePro LED PLL

Approval and Application

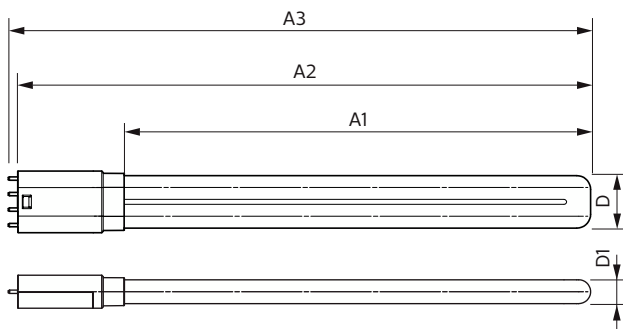
Energy Efficiency Class	E
Energy-saving product	Yes
Approval marks	RoHS compliance TUV CE marking KEMA Keur certificate
Energy consumption kWh/1,000 hours	17 kWh
EPREL registration number	1370827
EU RoHS compliant	Yes

Product Data

Full EOC	872016915707100
----------	-----------------

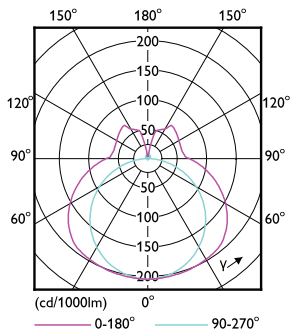
Order product name	CorePro LED PLL EM/Mains 16.5W 830 4P
Order code	15707100
SAP numerator – quantity per pack	1
Numerator – packs per outer box	10
Material number (12NC)	929003592602
Full product name	CorePro LED PLL EM/Mains 16.5W 830 4P
EAN/UPC – Case	8720169157088

Dimensional drawing

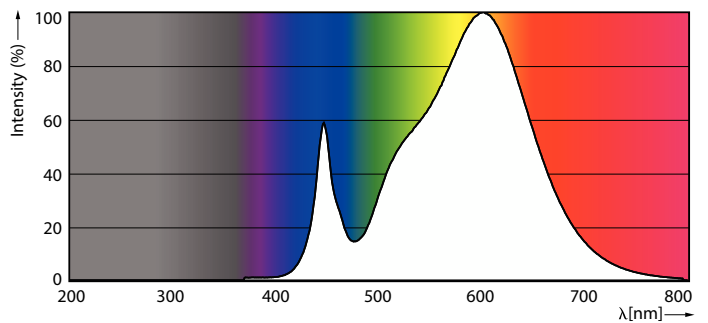


Product	D1	D2	A1	A2	A3
CorePro LED PLL EM/Mains 16.5W 830 4P	17 mm		330 mm	405 mm	412 mm

Photometric data



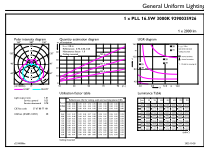
Light Distribution Diagram



Spectral Power Distribution Colour

CorePro LED PLL

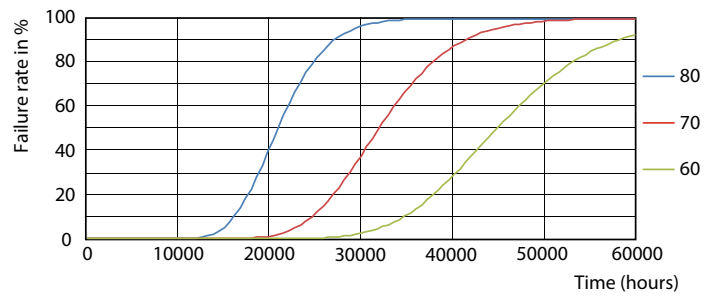
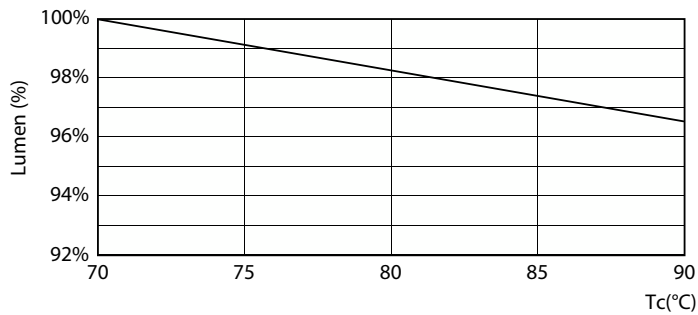
Photometric data



General Parameters 43 Page 10 of 17

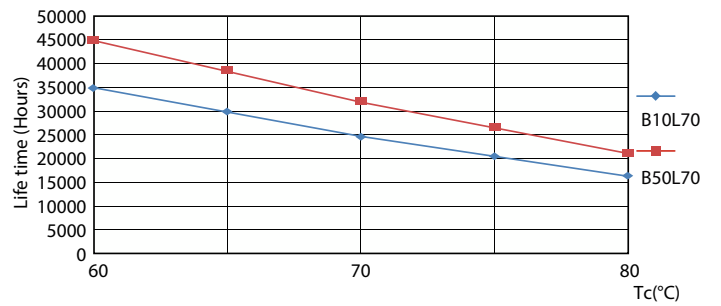
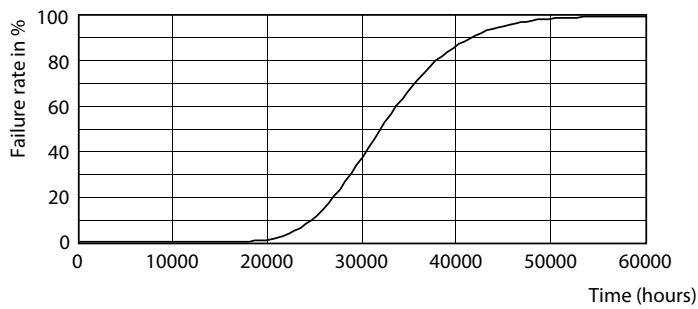
General uniform lighting - CorePro LED PLL EM/Mains 16.5W 830 4P

Lifetime



Lumen Maintenance Diagram

Life Expectancy Diagram

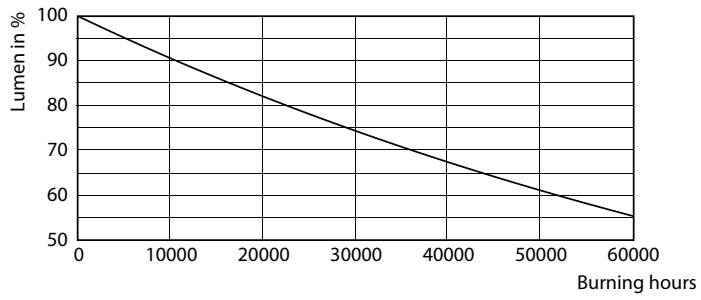


Life Expectancy Diagram - CorePro LED PLL EM/Mains 16.5W 830 4P

Life Expectancy Diagram

CorePro LED PLL

Lifetime



Lumen Maintenance Diagram - CorePro LED PLL EM/Mains 16.5W 830 4P

