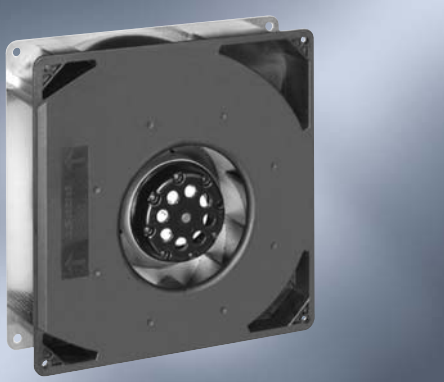


# AC Radial Fans

Series RG 160 220 x 220 x 56 mm



- AC radial blower with external rotor shaded-pole motor. Thermal contactor as protection against thermal overloading.
- Spiral housing and blower wheel of fibreglass-reinforced plastic. Housing base of galvanised steel plate.
- Air exhaust radial, through housing port. Rotational direction CCW looking at rotor.
- Electrical connection via leads AWG 18. Stripped and tinned ends.
- Mass 1.7 kg.

Nominal Data		Air Flow	Air Flow	Nominal Voltage	Frequency	Noise	Sinter-Sleeve Bearings Ball Bearings	Power Input	Nominal Speed	Temperature Range	Service Life $L_{10}$ at 40 °C	at $t_{max}$	Curve
Type		m <sup>3</sup> /h	CFM	V	Hz	Bel	□/■	Watt	min <sup>-1</sup>	°C	Hours	Hours	
RG 160-28/56S		202	118.9	<b>230</b>	<b>50</b>	6.6	■	47.0	2 750	-30...+70	30 000 / 15 000		1
RG 160-28/06S		223	131.3	<b>115</b>	<b>60</b>	6.9	■	50.0	3 050	-30...+80	27 500 / 12 500		2

