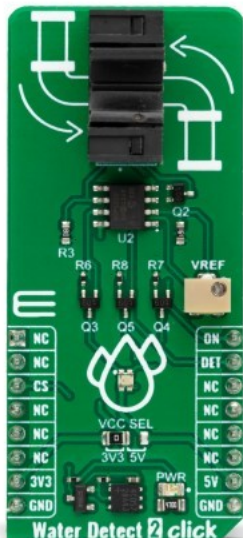


Water Detect 2 Click



PID: MIKROE-5820

Water Detect 2 Click is a compact add-on board that can detect the presence/flow of a liquid in a clear tube. This board features the OPB350L250, a tube liquid sensor from TT Electronics. Water Detect 2 Click has multiple output states and can recognize fluid present, no fluid present, and no tube present. This sensor accepts 1/4" tubing (6.3mm) as an outside diameter of the clear tubes, regardless of the direction of the liquid's flow. This Click board™ makes the perfect solution for the development of non-contact fluid sensing, IV fluid, oils, and other petroleum products sensing applications, colored fluids, toner fluids, water, and more.

Water Detect 2 Click is supported by a [mikroSDK](#) compliant library, which includes functions that simplify software development. This [Click board™](#) comes as a fully tested product, ready to be used on a system equipped with the [mikroBUS™](#) socket.

Mikroe produces entire development toolchains for all major microcontroller architectures.

Committed to excellency, we are dedicated to helping engineers bring the project development up to speed and achieve outstanding results.



ISO 27001: 2013 certification of informational security management system.
 ISO 14001: 2015 certification of environmental management system.
 OHSAS 18001: 2008 certification of occupational health and safety management system.



ISO 9001: 2015 certification of quality management system (QMS).

Specifications

Type	Miscellaneous
Applications	Can be used for the development of non-contact fluid sensing, IV fluid, oils, and other petroleum products sensing applications, colored fluids, toner fluids, water, and more
On-board modules	OPB350L250 - tube liquid sensor from TT Electronics
Key Features	Identify liquid presence or even no tube presence, and identify light or dark fluid, bubbles, accepts 1/4" (6.3mm) clear tubes, operational amplifier, potentiometer for calibration, onboard status RGB LED, and more
Interface	GPIO
ClickID	Yes
Compatibility	mikroBUS
Click board size	L (57.15 x 25.4 mm)
Input Voltage	3.3V or 5V

Resources

[mikroBUS™](#)

[mikroSDK](#)

[Click board™ Catalog](#)

[Click Boards™](#)

Downloads

[Water Detect 2 click example on Libstock](#)

[OPB350L250 datasheet](#)

[MCP6022 datasheet](#)

[Water Detect 2 click schematic](#)

[Water Detect 2 click 2D and 3D files](#)

Mikroe produces entire development toolchains for all major microcontroller architectures.

Committed to excellency, we are dedicated to helping engineers bring the project development up to speed and achieve outstanding results.



ISO 27001: 2013 certification of informational security management system.
 ISO 14001: 2015 certification of environmental management system.
 OHSAS 18001: 2008 certification of occupational health and safety management system.



ISO 9001: 2015 certification of quality management system (QMS).