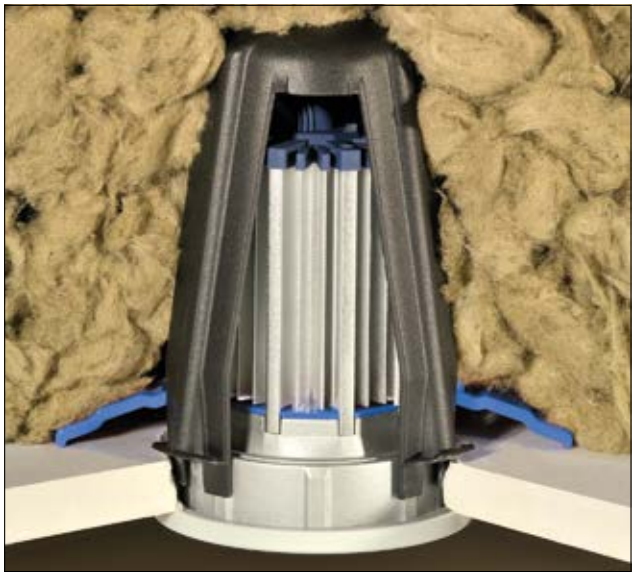




Downlight Covers - For Residential Buildings

SpotClip-II

SpotClip-II has been developed for use with large LED spotlights. Additional, flexible legs allow use with blown-in insulation material. The legs can be easily removed to facilitate cable installation. The downlight cover can be inserted easily into the ceiling cavity and offers valuable savings on installation time. SpotClip creates a reliable gap between the light bulb and the insulation material, reducing the risk of overheating and heat accumulation.



The additional 4 legs on SpotClip-II allow use with blown-in cavity insulation.



www.HellermannTyton.co.uk/SpotClip2-cat22

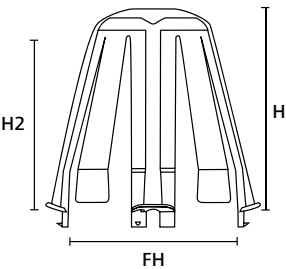


SpotClip-II downlight cover with 4 additional flexible legs.



SpotClip-II shown using standard insulation wool.

MATERIAL	Polyamide 6.6, glass-fibre reinforced (PA66GF15%)
Operating Temperature	-20 °C to +120 °C
Flammability	UL94 V0 at 1.5mm thickness, Glow Wire Test (GWT) 960 °C

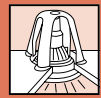


SpotClip-II

TYPE	Hole Ø (FH) min.	Hole Ø (FH) max.	Height (H)	Height (H2)	Colour	Pack Cont.	Article-No.
SpotClip-II	62.0	90.0	107.0	95.0	Black (BK)	10 pcs.	148-00098

All dimensions in mm. Subject to technical changes.
Minimum Order Quantity (MOQ) may differ from package content.





Downlight Covers - For Residential Buildings

SpotClip-II

Features and benefits

- SpotClip-II has been developed for bulbs up to 95 mm height
- Ensures safety distance between downlight, damp-proof foil and insulation material
- Flexible installation during or after construction
- Additional spikes at the end of the legs prevent SpotClip shifting
- Suitable for fixing into holes from 62 - 90 mm diameter
- Remains rigid even at higher temperatures
- Flame retardant material according to UL94-V0
- Improves life span and reliability of lamps
- Tested according to EN 60598-1, EN 60598-2-2, and NF C 15100



SpotClip-I and SpotClip-II for maximum downlight heights of 70 mm and 95 mm respectively.



Retaining spikes and support wings hold SpotClip-II in the required position.



1. Use the delivered tool to install SpotClip-II in the fixing hole as easy as possible.



2. Push the spikes into the plasterboard to prevent shifting and disconnect the tool.



3. Start the installation of the downlight in a safe way.