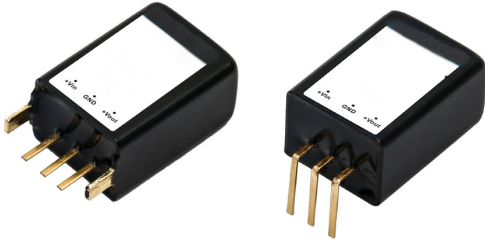


Non Isolated Board Mount DC / DC Converters

multicomp PRO

**RoHS
Compliant**



Features

- Input voltage range up to 8:1
- High efficiency up to 92%
- No-load input current as low as 0.5mA
- Operating ambient temperature range: -40°C to +85°C
- Output short-circuit protection
- Meet MIL-STD-810F vibration test

Selection Guide

Part Number	Input Voltage (V DC)*	Output		Full Load Efficiency (%) MIN./Typ.		Capacitive Load (μF) Max.
	Nominal (Range)	Voltage (V DC)	Current (mA) Max.	Vin=24V	Vin=48V	
MP-K78U24-700R3	48 (33-75)	24	700	-	88/92	330
MP-K78U24-700R3L						

Note: *For input voltage exceeding 60V DC, an input capacitor of 100μF/100V is required.

Input Specifications

Item	Operating Conditions	Min.	Typ.	Max.	Unit
No-load Input Current	Nominal input voltage	-	0.5	1.5	mA
Reverse Polarity at Input	-	Avoid / Not protected			
Input Filter	-	Capacitance filter			

Output Specifications

Item	Operating Conditions	Min.	Typ.	Max.	Unit
Voltage Accuracy	10%-100%, input voltage range	-	±1.5	±2.5	%
Linear Regulation	Full load, input voltage range	-	±1.2	±2.5	
Load Regulation	Nominal input voltage, 10% -100% load	-	±0.6	±1	
Ripple & Noise*	20MHz bandwidth, nominal input voltage, 10% -100% load	-	75	-	mVp-p
Temperature Coefficient	Operating temperature -40°C to +105°C	-	-	±0.02	%/°C
Transient Response Deviation	Nominal input voltage, 25% load step change	-	±100	±180	mV
Transient Recovery Time		-	150	250	μs
Short-circuit Protection	Input voltage range	Ambient temperature ≤85°C		Continuous, self-recovery	
		Ambient temperature >85°C		Short ≤3s	

Notes:

*The "parallel cable" method is used for ripple and noise test, refer to DC-DC Converter Application Notes for specific information.

Newark.com/multicomp-pro
Farnell.com/multicomp-pro
sg.element14.com/b/multicomp-pro

multicomp PRO

Non Isolated Board Mount DC / DC Converters



General Specifications

Item	Operating Conditions	Min.	Typ.	Max.	Unit
Operating Temperature	-	-40	-	+105	°C
Storage Temperature	Product	-55	-	+125	
	Tag	-40		+300	
Pin Soldering Resistance Temperature	Soldering spot is 1.5mm away from case for 10 seconds	-	-	+300	
Storage Humidity	Non-condensing	5	-	95	%RH
Vibration*	Bottom-filled silicone rubber	MIL-STD-810F			
Switching Frequency	Full load, nominal input voltage	-	550	-	kHz
MTBF	MIL-HDBK-217F@25°C	8215	-	-	k hours

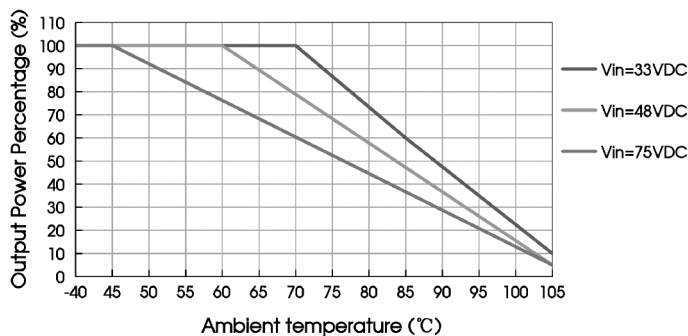
Note: * Meeting the vibration standard requires filling the bottom void of the product with silicone rubber.

Mechanical Specifications

Case Material	Black plastic; flame-retardant and heat-resistant (UL94V-0)	
Dimensions	MP-K78U24-700R3	12.1mm × 8.6mm × 17.5mm
	MP-K78U24-700R3L	20.35mm × 12.1mm × 8.6mm
Weight	MP-K78U24-700R3	6.2g (Typ.)
	MP-K78U24-700R3L	6.6g (Typ.)
Cooling Method	Free Air Convection	

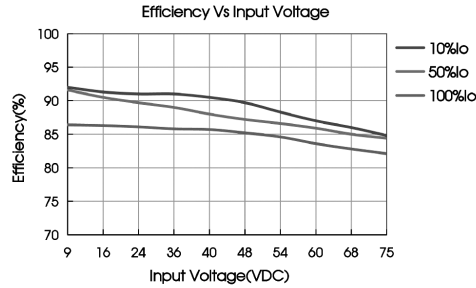
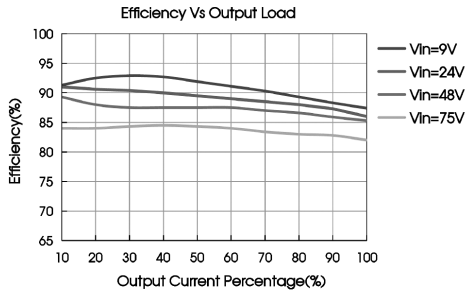
Typical Characteristic Curves

Temperature Derating Curves



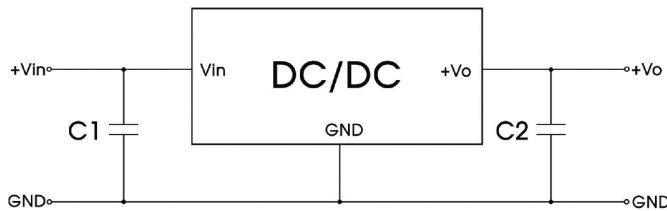
Non Isolated Board Mount DC / DC Converters

multicomp PRO



Design Reference

Typical application

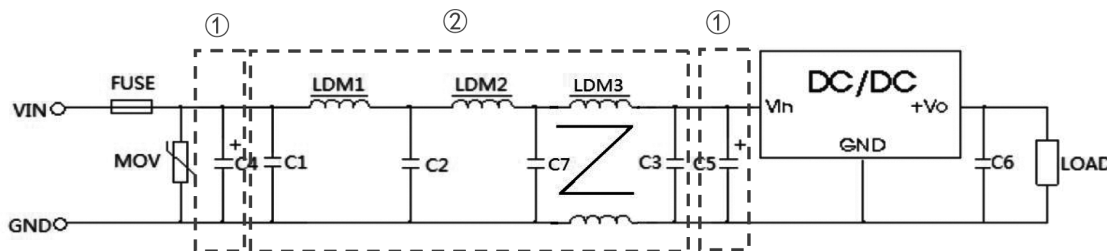


Part Number	C1 (Ceramic Capacitor)	C2 (Ceramic Capacitor)
MP-K78U24-700R3	10μF/100V	10μF/50V
MP-K78U24-700R3L		

Notes:

1. The required C1 and C2 capacitors must be connected as close as possible to the terminals of the module;
2. Refer to Table 1 for C1 and C2 capacitor values. For certain applications, increased values and/or tantalum or low ESR electrolytic capacitors may also be used instead;
3. Converter cannot be used for hot swap and with output in parallel.

EMC compliance circuit



C4/C5	C1/C2/C3/C7	C6	LDM1	LDM2	LDM3
680μF/100V	4.7μF/100V	10μF/50V	10μH	22μH	1.3mH

PCB Heat Dissipation Copper Foil Recommended

Series	Heat dissipation copper foil layer	Heat dissipation copper foil area
MP-K78UXX-1000R3	double	15mm×15mm
MP-K78UXX-1000R3L	single	20mm×20mm

Newark.com/multicomp-pro
Farnell.com/multicomp-pro
sg.element14.com/b/multicomp-pro

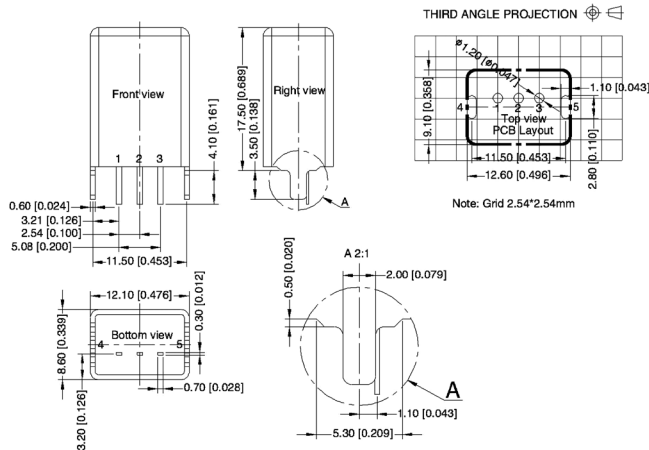
multicomp PRO

Non Isolated Board Mount DC / DC Converters



Diagram

MP-K78U24-700R3

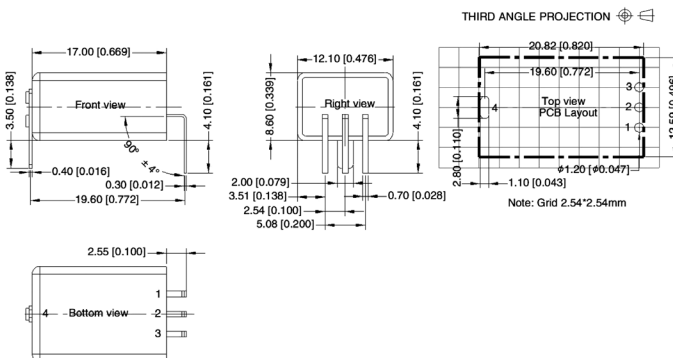


Pin-Out	
Pin	Mark
1	+Vin
2	GND
3	+Vout
4	Case Pin
5	Case Pin

Note:

PIN4 and PIN5 are shell terminals for heat dissipation. When using the product, connect the terminals to the rear PCB board, and the PCB must be suspended.

MP-K78U24-700R3L



Pin-Out	
Pin	Mark
1	+Vin
2	GND
3	+Vout
4	Case Pin

Note: PIN4 is the shell terminal, which dissipates heat. When using the product, connect the terminal to the rear PCB board. The PCB must be suspended in the air.

Dimensions : Millimetres (Inches)

Pin Diameter Tolerances: $\pm 0.1\text{mm}$ ($\pm 0.004''$)

General Tolerances: $\pm 0.5\text{mm}$ ($\pm 0.02''$)

Part Number Table

Description	Part Number
Non Isolated Board Mount, DC / DC Converter, 24V, 0.7A	MP-K78U24-700R3
Non Isolated Board Mount, DC / DC Converter, 24V, 0.7A	MP-K78U24-700R3L

Important Notice : This data sheet and its contents (the "Information") belong to the members of the AVNET group of companies (the "Group") or are licensed to it. No licence is granted for the use of it other than for information purposes in connection with the products to which it relates. No licence of any intellectual property rights is granted. The Information is subject to change without notice and replaces all data sheets previously supplied. The Information supplied is believed to be accurate but the Group assumes no responsibility for its accuracy or completeness, any error in or omission from it or for any use made of it. Users of this data sheet should check for themselves the Information and the suitability of the products for their purpose and not make any assumptions based on information included or omitted. Liability for loss or damage resulting from any reliance on the Information or use of it (including liability resulting from negligence or where the Group was aware of the possibility of such loss or damage arising) is excluded. This will not operate to limit or restrict the Group's liability for death or personal injury resulting from its negligence. Multicomp Pro is the registered trademark of Premier Farnell Limited 2019.

Newark.com/multicomp-pro

Farnell.com/multicomp-pro

sg.element14.com/b/multicomp-pro

