



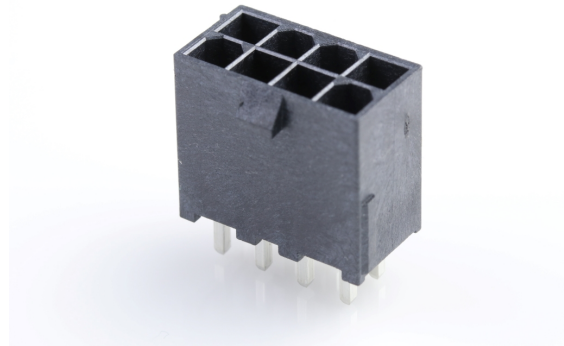
**Part Number :** [462071008](#)

**Product Description :** 4.20mm Pitch, Mini-Fit Jr. Reflow Solder Capable Header, Dual Row, Vertical, 8 Circuits, 1.57mm PCB Thickness, without PCB Pegs, LCP Housing, with Tin (Sn) Over Nickel (Ni) Plating, Glow-Wire Capable, Tray

**Series Number :** 46207

**Status :** Active

**Product Category :** PCB Headers and Receptacles



---

## Documents & Resources

### Drawings

[Drawing 462071008\\_sd.pdf](#)

[Packaging Design Drawing PK-46207-001-000.pdf](#)

### 3D Models and Design Files

[3D Model 462071008\\_stp.zip](#)

[Symbol Footprint Data SYM-46207-1008-001.zip](#)

### Specifications

[Product Specification PS-5556-004-001.pdf](#)

[Product Specification PS-45750-001-001.pdf](#)

[Product Specification 55560004-PS-ES-000.pdf](#)

[Product Specification 55560004-PS-SK-000.pdf](#)

[Product Specification 55560004-PS-CH-000.pdf](#)

---

## Product Environment Compliance

### Compliance

GADSL/IMDS	Not Relevant
China RoHS	
EU ELV	Not Relevant
Low-Halogen Status	Low-Halogen per IEC 61249-2-21
REACH SVHC	Not Contained per D(2023)3788-DC (14 Jun 2023)
EU RoHS	Compliant per EU 2015/863

[Multiple Part Product Compliance Statements](#)

- Eu RoHS
- REACH SVHC
- Low-Halogen

#### Multiple Part Industry Compliance Documents

- IPC 1752A Class C
- IPC 1752A Class D
- Molex Product Compliance Declaration
- IEC-62474
- chemSHERPA (xml)

#### EU RoHS Certificate of Compliance

---

### Part Details

#### General

Status	Active
Category	PCB Headers and Receptacles
Series	46207
Description	4.20mm Pitch, Mini-Fit Jr. Reflow Solder Capable Header, Dual Row, Vertical, 8 Circuits, 1.57mm PCB Thickness, without PCB Pegs, LCP Housing, with Tin (Sn) Over Nickel (Ni) Plating, Glow-Wire Capable, Tray
Application	Board-to-Board, Power, Wire-to-Board
Comments	Current for wire-to-wire applications = 13.0A max. per circuit; Current for wire-to-board applications = 9.0A max. per circuit
Component Type	PCB Header
Product Family	Mini-Fit Family Power Connectors
Product Name	Mini-Fit Jr.
UPC	883906044541

#### Agency

CSA	LR19980
UL	E29179

#### Electrical

Current - Maximum per Contact	13.0A
-------------------------------	-------

Voltage - Maximum	600V AC (RMS)/DC
-------------------	------------------

## Physical

Breakaway	No
Circuits (Loaded)	8
Circuits (maximum)	8
Color - Resin	Black
Durability (mating cycles max)	100
First Mate / Last Break	No
Flammability	94V-0
Glow-Wire Capable	Yes
Guide to Mating Part	No
Lock to Mating Part	Yes
Material - Metal	Brass
Material - Plating Mating	Matte Tin
Material - Plating Termination	Matte Tin
Material - Resin	High Temperature Thermoplastic
Net Weight	2.986/g
Number of Rows	2
Orientation	Vertical
Packaging Type	Tray
PC Tail Length	3.66mm
PCB Locator	Yes
PCB Retention	Yes
PCB Thickness - Recommended	1.57mm
Pitch - Mating Interface	4.20mm
Pitch - Termination Interface	4.20mm
Polarized to Mating Part	Yes
Polarized to PCB	Yes
Shrouded	Fully
Stackable	No
Temperature Range - Operating	-40° to +105°C
Termination Interface Style	Through Hole

## Solder Process Data

Max-Duration	30
Lead-Free Process Capability	SMC&WAVE
Max-Cycle	3
Max-Temp	265

---

## Mates With / Use With

### Mates with Part(s)

Description	Part Number
Mini-Fit TPA2 and Mini-Fit Sigma Dual Row Receptacle Housings	<u>172708</u>
Mini-Fit Jr. Receptacle Housings	<u>5557</u>

---

---