

**cell chemistry:** Li-Ion  
**cell size:** AA (14500)  
**cell type:** round cell

**Conditions**

**nominal output voltage:** 1.5 V when SOC (state of charge) of battery is >10%  
 reduced output voltage: 1.05 V when SOC (state of charge) of battery is <10%

**capacity**  
 nominal: 2000 mAh discharge at 0.2C  
 minimum: 1800 mAh discharge at 0.2C  
 1700 mAh discharge at 0.5C  
 ta: 20°C; EV(Discharge End Voltage): 0.9V

**discharge** ta: 0...45°C  
 max. continuous discharge current: 2000 mA  
 nom. discharge current: 400 mA

**charge via type-C connector** (with USB charger)  
 supply voltage: 5 V ± 0.25V  
 charge current: 350 mA ± 10%  
 charge time: 3 h ± 0.5h

**external charge (at battery + / - poles)** is not allowed; charge battery via type-C connector only

internal resistance: n/a at 1kHz, sine wave measurement according to IEC 896-2

**built-in li-ion battery:** 3.7 V / 920mAh  
 energy: 3.4 Wh

**output protection functions**  
 overload cut-off current: 2.5 A ± 0.5A

**deep discharge protection function**  
 cut-off voltage of int. battery: 2.6 V ± 0.3V

**LED charge indicator** visible at the type-C socket  
 flashes red during charge  
 lights red at end of charge (battery fully charged)

**life time expectance** (C>70% of min. capacity) ≥ 1200 cycles at 0.2C charge / discharge rate

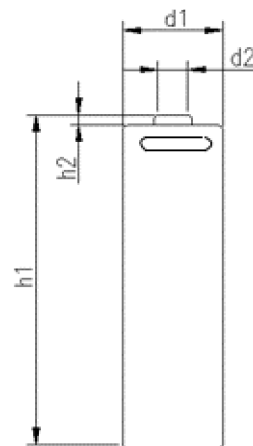
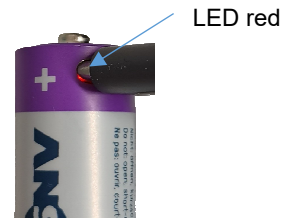
**self discharge:**  
 ≤ 2 %/month at 20°C  
 ≤ 5 %/month at 30°C  
 ≤ 10 %/month at 40°C


**ambient temperature range:**  
 0...45 °C charge  
 - 20...60 °C discharge  
 - 20...25 °C storage max. 1year  
 - 20...45 °C storage max. 3months

recommended SOC: 30...50 % for long-time storage  
 (SOC = state of charge)

**mechanical specifications**

cell dimensions (incl. sleeve)  
 diameter d1: 14.2 - 0.5 mm  
 diameter d2: 5.0 - 1 mm  
 height h1: 50.5 - 1 mm  
 height h2: 1.5 ± 0.5 mm  
 weight: 19 ± 1 g



	<b>ANSMANN Specifications for model:</b> <b>AA (14500) Li-Ion Battery</b> <b>1.5V 2000mAh w. type-C charge</b>
	data sheet no. / part no. 1312-0036
	s.n. 705163
	author / date TG / 24.07.2023