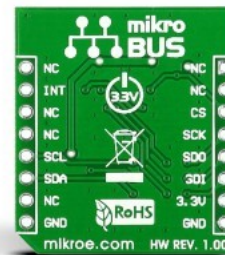
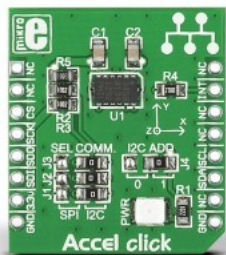


Accel Click



PID: MIKROE-1194

Accel Click is a compact add-on board that contains an acceleration sensor. This board features the ADXL345, an ultra-low power, 3-axis accelerometer with high resolution (13-bit) measurements from Analog Devices. It allows selectable full-scale acceleration measurements in ranges of $\pm 2g$, $\pm 4g$, $\pm 8g$, or $\pm 16g$ in three axes with a configurable host interface that supports both SPI and I2C serial communication. Several special sensing functions are also provided (presence or lack of motion detection, tap, and free-ball sense) alongside a low-power mode that enables intelligent motion-based power management. This Click board™ is suitable for various applications such as motion-activated functions, measurement of inclination changes, and tilt-sensing applications.

Accel Click is supported by a [mikroSDK](#) compliant library, which includes functions that simplify software development. This [Click board™](#) comes as a fully tested product, ready to be used on a system equipped with the [mikroBUS™](#) socket.

Mikroe produces entire development toolchains for all major microcontroller architectures.

Committed to excellency, we are dedicated to helping engineers bring the project development up to speed and achieve outstanding results.



ISO 27001: 2013 certification of informational security management system.
 ISO 14001: 2015 certification of environmental management system.
 OHSAS 18001: 2008 certification of occupational health and safety management system.



ISO 9001: 2015 certification of quality management system (QMS).

Specifications

Type	Motion
Applications	Can be used for various applications such as motion-activated functions, measurement of inclination changes, and tilt-sensing applications
On-board modules	ADXL345 - complete 3-axis acceleration measurement system from Analog Devices
Key Features	Low power consumption, high-performance, high resolution, several sensing function, embedded memory management system with FIFO technology, interrupt, and more
Interface	I2C,SPI
ClickID	Manifest,No
Compatibility	mikroBUS
Click board size	S (28.6 x 25.4 mm)
Input Voltage	3.3V

Resources

[mikroBUS™](#)

[mikroSDK](#)

[Click board™ Catalog](#)

[Click Boards™](#)

Downloads

[Accel click example on Libstock](#)

[Accel Click User Manual](#)

[ADXL345 datasheet](#)

[Accel click schematic](#)

[Accel click 2D and 3D files](#)

Mikroe produces entire development toolchains for all major microcontroller architectures.

Committed to excellency, we are dedicated to helping engineers bring the project development up to speed and achieve outstanding results.



ISO 27001: 2013 certification of informational security management system.
 ISO 14001: 2015 certification of environmental management system.
 OHSAS 18001: 2008 certification of occupational health and safety management system.



ISO 9001: 2015 certification of quality management system (QMS).