

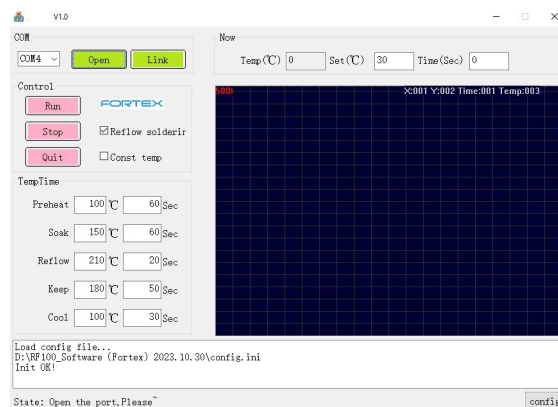
REFLOW OVEN Model RF100

Specifications



The RF100 Reflow oven is a stylish, practical reflow oven for manufacturing and reworking of SMT products. The oven has a large display. The intuitive menu navigation is controlled by a membrane keyboard. The product uses highly efficient infrared heating elements and has several thermocouple temperature gauges. Due to this and the precise evaluation in the microprocessor, the temperature curve of the reflow process is highly accurate and the temperature in the respective reflow sections very uniform.

With the RF100 reflow oven all common alloys can be processed. The oven has an automatic error detection with alarm. The oven is also supplied with a Software package allowing control and monitoring of the Oven from a Windows PC over a serial link:-



FORTEX

This product has a variety of applications such as reflow soldering, repairing, drying and so on. It is suitable for SMT small series, for research and development of electronic products, school, education and study. The operating system software is in the English Language

The stove is well insulated by a special aluminium silicate cotton, which reduces energy consumption, protects the circuit and allows optimal operation and keeps the temperature in the furnace constant.

Technical Data

Power connection	200 – 230 VAC. / 50-60Hz (120 VAC A60Hz Adapter available to purchase separately)
Max. Power Consumption	2400 W
Max. PCB-Board Size	350 x 300 mm Maximum height 80mm
Time Settings	00:00 – 99:59 sec.
Temperature	60 -300 °C
Setting Options	5 Phases adjustable in time and temperature: Preheat Heat Soldering Holding Cool down
Working Modes	Automatic Reflow-Soldering Permanent Heating or Drying function Option to store 4 different pre configured and programmed Reflow profiles
Interface	Graphic display with Keyboard automatic Alarm function Display of Process progress Windows Compatible PC software package allowing control and monitoring via serial link
Heatup Time	Approximately. 8 min
Dimensions of Unit (LxWxH) (mm)	504 x 500 x 314 mm
Weight	28 kg

