

2311714-1 ✓ ACTIVE

TE Internal #: 2311714-1

PCB Mount Header, Horizontal, Wire-to-Board, 6 Position, 1.8 mm [.07 in] Centerline, Fully Shrouded, Tin, Surface Mount, Signal, Black

[View on TE.com >](#)



Connectors > PCB Connectors > PCB Headers & Receptacles



Connector System: **Wire-to-Board**

Number of Positions: **6**

Centerline (Pitch): **1.8 mm [.07 in]**

Sealable: **No**

PCB Mount Orientation: **Horizontal**

## Features

### Product Type Features

Mixed & Hybrid Header	No
Connector Shape	Rectangular
PCB Connector Assembly Type	PCB Mount Header
Header Type	Fully Shrouded
Connector System	Wire-to-Board
Sealable	No
Connector & Contact Terminates To	Printed Circuit Board

### Configuration Features

Number of Positions	6
PCB Mount Orientation	Horizontal
Number of Rows	1

### Body Features

Primary Product Color	Black
Connector & Keying Code	A

### Contact Features



Contact Size	.5mm
Contact Type	Tab
Mating Tab Width	.5 mm[.019 in]
Mating Tab Thickness	.4 mm[.015 in]
Contact Mating Area Plating Material	Tin
Contact Current Rating (Max)	3 A

#### Termination Features

Termination Method to Printed Circuit Board	Surface Mount
---	---------------

#### Mechanical Attachment

Mounting Holes	Without
Mating Alignment	With
PCB Mount Alignment	With
Connector Mounting Type	Board Mount

#### Housing Features

Centerline (Pitch)	1.8 mm[.07 in]
--------------------	----------------

#### Dimensions

Connector Length	19.36 mm[.76 in]
Connector Width	6.55 mm[.257 in]

#### Usage Conditions

Operating Temperature Range	-40 – 130 °C[-40 - 266 °F]
-----------------------------	----------------------------

#### Operation/Application

Circuit Application	Signal
---------------------	--------

#### Industry Standards

UL Flammability Rating	UL 94HB
------------------------	---------

#### Other

Interface Number	114-94000-17, 208-18060
------------------	-------------------------

#### Product Compliance

[For compliance documentation, visit the product page on TE.com>](#)

EU RoHS Directive 2011/65/EU	Compliant
EU ELV Directive 2000/53/EC	Compliant
China RoHS 2 Directive MIIT Order No 32, 2016	No Restricted Materials Above Threshold



EU REACH Regulation (EC) No. 1907/2006

Current ECHA Candidate List: JUNE 2023 (235)

Candidate List Declared Against: JUNE 2023 (235)

Does not contain REACH SVHC

Halogen Content

Low Halogen - Br, Cl, F, I < 900 ppm per homogenous material. Also BFR/CFR/PVC Free

Solder Process Capability

Not reviewed for solder process capability

Product Compliance Disclaimer

This information is provided based on reasonable inquiry of our suppliers and represents our current actual knowledge based on the information they provided. This information is subject to change. The part numbers that TE has identified as EU RoHS compliant have a maximum concentration of 0.1% by weight in homogenous materials for lead, hexavalent chromium, mercury, PBB, PBDE, DBP, BBP, DEHP, DIBP, and 0.01% for cadmium, or qualify for an exemption to these limits as defined in the Annexes of Directive 2011/65/EU (RoHS2). Finished electrical and electronic equipment products will be CE marked as required by Directive 2011/65/EU. Components may not be CE marked. Additionally, the part numbers that TE has identified as EU ELV compliant have a maximum concentration of 0.1% by weight in homogenous materials for lead, hexavalent chromium, and mercury, and 0.01% for cadmium, or qualify for an exemption to these limits as defined in the Annexes of Directive 2000/53/EC (ELV). Regarding the REACH Regulation, the information TE provides on SVHC in articles for this part number is based on the latest European Chemicals Agency (ECHA) 'Guidance on requirements for substances in articles' posted at this URL: <https://echa.europa.eu/guidance-documents/guidance-on-reach>

### Compatible Parts



TE Part # 2282154-1  
6POS,NANOMQS,REC HSG,CODA



TE Part # 2333104-1  
4POS,NANOMQS,REC HSG ASSY, COD A

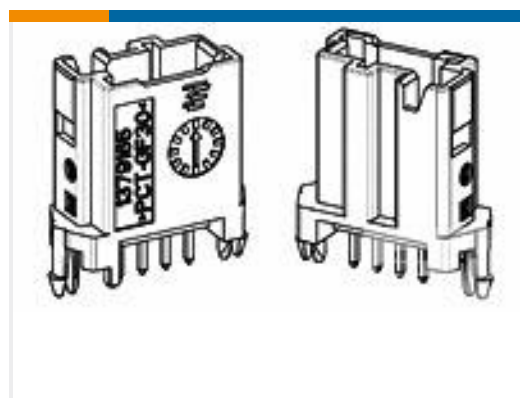
### Customers Also Bought



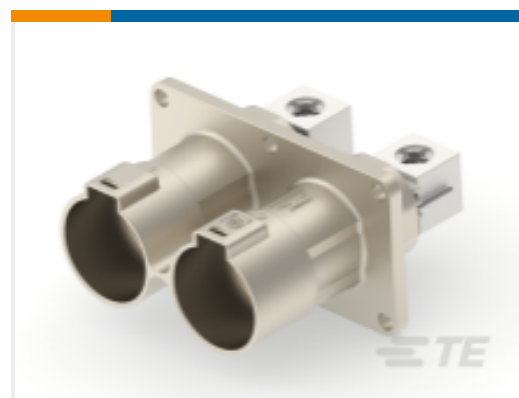
TE Part #2-338069-0  
MICRO-MATCH SMD FTE



TE Part #2208165-1  
20POS,NANO MQS,HEADER ASSY, CODA



TE Part #1379165-4  
4pos MQS .63 header 180deg THR



TE Part #1-2399607-1  
2POS,HVP1400,ASSY,180DEG,COD A /B



## Documents

### Product Drawings

6POS,TAB0.5X0.4,HDR ASSY,90DEG,COD A

English

### CAD Files

3D PDF

3D

Customer View Model

[ENG\\_CVM\\_CVM\\_2311714-1\\_A.2d\\_dxf.zip](#)

English

Customer View Model

[ENG\\_CVM\\_CVM\\_2311714-1\\_A.3d\\_igs.zip](#)

English

Customer View Model

[ENG\\_CVM\\_CVM\\_2311714-1\\_A.3d\\_stp.zip](#)

English

By downloading the CAD file I accept and agree to the [Terms and Conditions](#) of use.

### Product Specifications

Product Specification

English