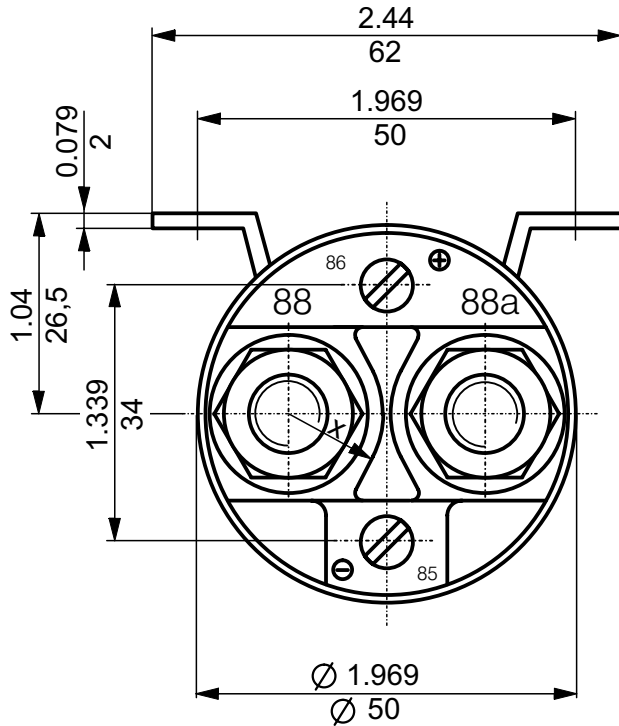
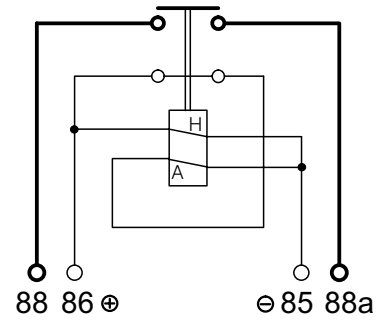


200 AMP POWER RELAY (28 VDC)  
SIDE MOUNTING ENVIRONMENTALLY SEALED

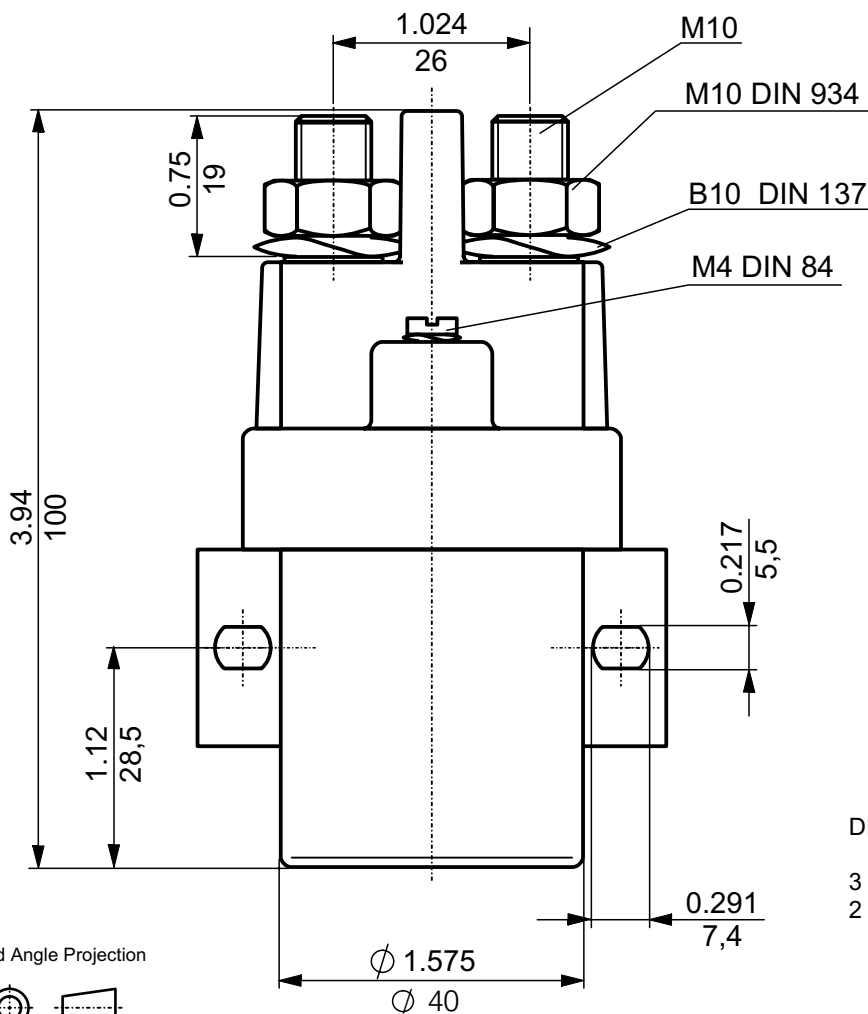


CIRCUIT



H = HOLDING COIL  
A = PULL IN COIL

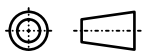
$$X = \frac{0.492}{12,5}$$



DIMENSIONAL TOLERANCES

3 PLACE DECIMAL  $\pm 0.010$   
2 PLACE DECIMAL  $\pm 0.03$   
ANGULAR  $\pm 0^{\circ}30$

Third Angle Projection



1994	Date	Name	Inch mm	Scale 1:1
Design	21.09.	S.Paul	General Tolerances DIN 7168 m ISO 2768	ELEKTROTECHNIK D-72218 Wildberg
Check	21.09.	Grupp		
Appro				

Drawing No.  $\cong$  Order No.

26.58.09

### ENVIRONMENTAL CHARACTERISTICS

TEMPERATUR RANGE ..... -40° C TO +85° C (-40° F TO +185° F)  
 MAX. ALTITUDE RATING ..... 50 000 FT  
 SEAL ..... IEC PUBLICATION 529; IP 67; 6 FT  
 SHOCK G-LEVEL ..... 6G / 11 MSEC  
 VIBRATION ..... 4 G / 50-2000 Hz

### ELECTRICAL CHARACTERISTICS

MIN. INSULATION RESISTANCE; INITIAL ..... 100 MEGOHMS  
 AFTER LIFE OR ENVIRONMENTAL ..... 50 MEGOHMS  
 DIELECTRIC WITHSTANDING VOLTAGE SEA-LEVEL 1 MINUTE ..... 1 050 VOLTS  
 ALTITUDE 1 MINUTE ..... 500 VOLTS  
 MAX. CONTACT DROP INITIAL ..... 0.15 VOLTS  
 AFTER LIFE TEST ..... 0.175 VOLTS  
 OVERLOAD ..... 2 000 AMP FOR 1 SEC. , 500 AMP FOR 20 SEC.  
 DUTY RATING ..... 200 AMP CONTINUOUS

### RATED CONTACT LOAD (28 VDC)

RESISTIVE LOAD ..... 50 000 CYCLES WITH 200 AMP  
 INDUCTIVE LOAD ..... 10 000 CYCLES WITH 100 AMP  
 MOTOR LOAD ..... 50 000 CYCLES WITH 200 AMP  
 MECHANICAL LIFE ..... 100 000 CYCLES WITH 50 AMP

### OPERATING CHARACTERISTICS

#### COIL DATA

VOLTAGE RANGE ..... 18 - 32 VDC  
 NOMINAL VOLTAGE ..... 28 VDC  
 PICK UP VOLTAGE MAX. .... 18 VDC FULL TEMP. RANGE  
 RESISTANCE PULL IN COIL ..... 5.2 OHMS ± 20%  
 PULL IN CURRENT MAX. .... 4 AMP FOR 20 MILLISECONDS  
 RESISTANCE HOLDING COIL ..... 120 OHMS ± 10%  
 HOLDING CURRENT MAX. .... 0.30 AMP  
 DROP OUT VOLTAGE ..... ≤ 6 VDC FULL TEMP. RANGE

#### TIME-MILLISECONDS-MAX.

OPERATE ..... 30  
 BOUNCE ..... 5  
 RELEASE ..... 20

TYPE 26.58.01 ..... 0.92 kg = 2.03 POUND MAX.  
WEIGHT TYPE 26.58.06 ..... 0.63 kg = 1.39 POUND MAX.  
 TYPE 26.58.09 ..... 0.63 kg = 1.39 POUND MAX.

WIRE SECTION (AT NOMINAL LOAD) ..... MIN. 70 mm<sup>2</sup> / 0.109 sq. in. / AWG 00

SUBJECT TO CHANGE

1994	Date	Name	← Inch mm →	Scale	 <b>ELEKTROTECHNIK</b> D-72218 Wildberg	Drawing No. ≙ Order No.  <h2 style="margin: 0;">26.58.09</h2>
Design	21.09.	S.Paul	General Tolerances			
Check	21.09.	Grupp	DIN 7168 m			
Appro			ISO 2768			