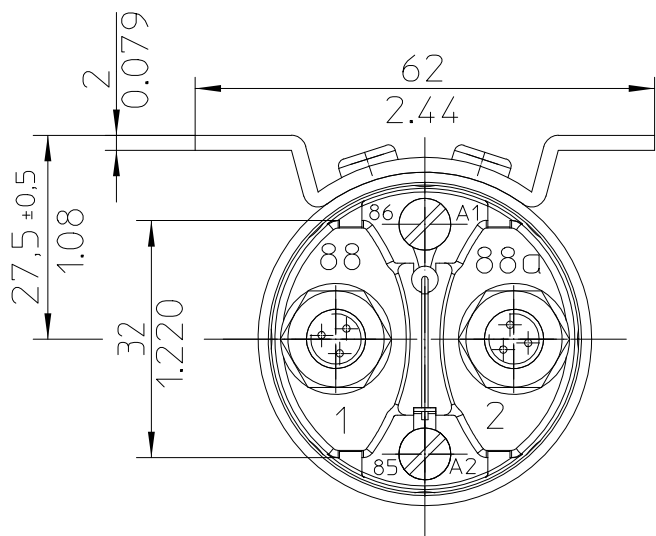
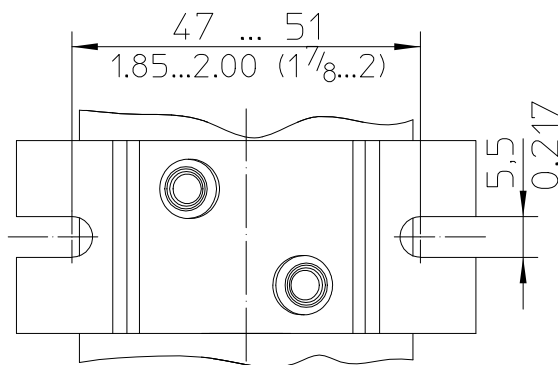


# 120AMP. POWER RELAY (12VDC)

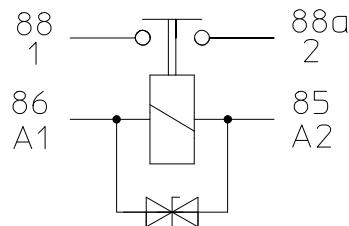
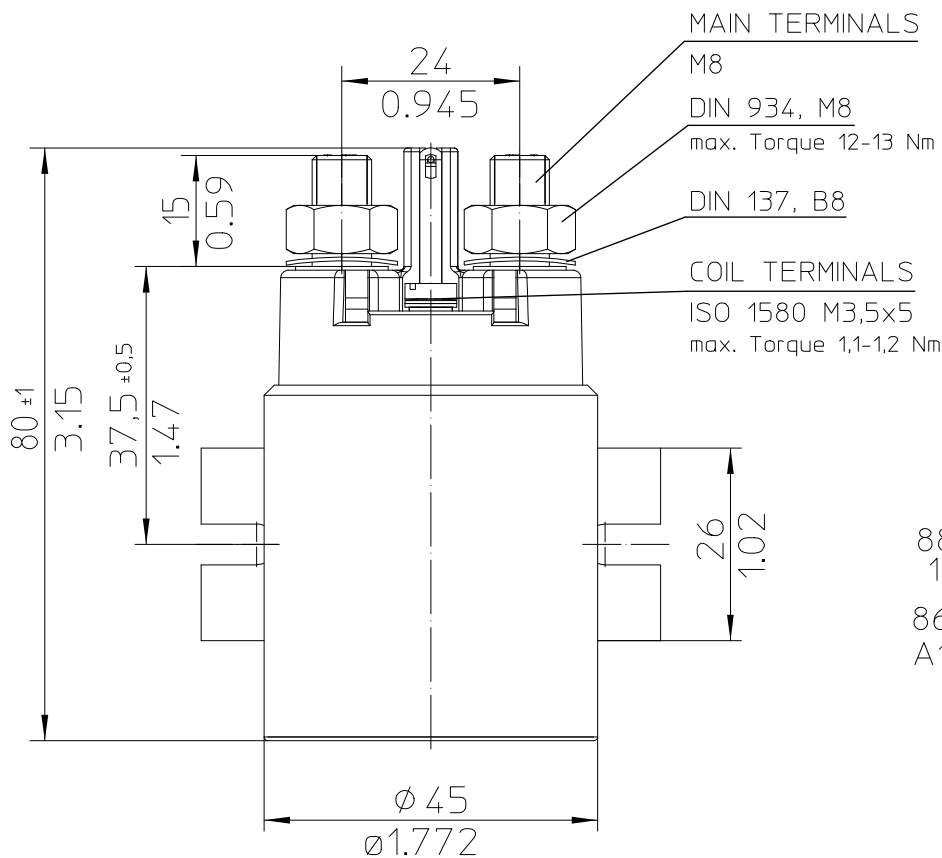
STANDARD SIDE MOUNTING ENVIRONMENTALLY SEALED



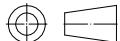
Mounting Dimensions

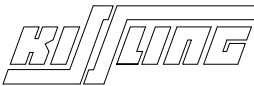


For this drawing we reserve the copyright in accordance with DIN ISO 16016



Third Angle Projection



	Date	Name	mm Inch	Scale 1:1		Drawing No:
Create	13.11.2015	Mielk				29-111-11
Edited	06.10.2020	Mielk	General Tolerances			
Check	06.10.2020	Kaise	DIN ISO 2768 cL			NSN: 5945-12-398-0611

Technical DataENVIRONMENTAL CHARACTERISTICS

TEMPERATURE RANGE ..... -40°C TO +85°C (-40°F TO +185°F)  
 MAX. ALTITUDE RATING ..... 50 000 FT  
 SEAL ..... IP67 (6 FT/ 0,2BAR 1 MIN.) I.A.W. IEC 529  
 IP6K9K (STEAM PRESSURE) DIN 40050 PART 9 AND I.A.W. IEC 529  
 SHOCK G-LEVEL ..... 6G/ 11 MSEC  
 VIBRATION ..... 4G/ 50-2000 Hz

ELECTRICAL CHARACTERISTICS

MIN. INSULATION RESISTANCE INITIAL ..... 100 MEGOHMS  
 AFTER LIVE OR ENVIRONMENTAL ..... 50 MEGOHMS  
 DIELECTRIC WITHSTANDING VOLTAGE ..... SEA LEVEL 1 MINUTE: 1050 VOLTS  
 ALTITUDE 1 MINUTE: 500 VOLTS  
 MAX. CONTACT DROP INITIAL ..... 0,15 VDC  
 AFTER LIFE TEST ..... 0,175 VDC  
 OVERLOAD ..... 1000 AMP FOR 1 SEC, 250 AMP FOR 20 SEC  
 DUTY RATING ..... 120 AMP CONTINUOUS

RATED CONTACT LOAD

RESISTIVE LOAD ..... 200 000 CYCLES WITH 75 AMP  
 ENDURANCE ..... 2 000 000 CYCLES

OPERATING CHARACTERISTICSCOIL DATA

VOLTAGE RANGE ..... 9-16 VDC  
 NOMINAL VOLTAGE ..... 12 VDC  
 PICK UP VOLTAGE MAX. .... 9 VDC FULL TEMP. RANGE  
 DROP OUT VOLTAGE MAX. .... ≤ 2 VDC FULL TEMP. RANGE  
 COIL RESISTANCE ..... 20 OHMS ±10%  
 COIL CURRENT APPROX. .... 0,6 AMP  
 COIL POWER APPROX. .... 7 W

TIME-MILLISECONDS-MAX.

OPERATE ..... 35  
 BOUNCE ..... 5  
 RELEASE ..... 15

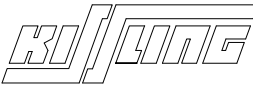

WEIGHT ..... 0,48 KG = 1.06 POUND MAX.

WIRE SECTION (AT NOMINAL LOAD) ..... MIN. 25mm<sup>2</sup>/ 0.039 sq. in./ AWG 3

MOUNTING POSITION ..... OPTIONAL

SUBJECT TO CHANGE

For this drawing we reserve the copyright  
in accordance with DIN ISO 16016

	Date	Name	mm	Scale		Drawing No:
Create	13.11.2015	Mielk		1:1		29-111-11
Edited	06.10.2020	Mielk	General Tolerances DIN ISO 2768 cL			NSN:
Check	06.10.2020	Kaise				5945-12-398-0611