

Product data sheet

Specifications



Safety switch, general duty, fusible, 200A, 3 poles, 60 hp, 240 VAC, NEMA 1, neutral factory installed

D324N

Product availability : Stock - Normally stocked in distribution facility

Main

Product	Single Throw Safety Switch
Duty Rating	General duty
Device Application	Residential
Disconnect Type	Fusible disconnect switch
Factory Installed Neutral	Neutral (factory installed)
Phase	3 phase
Number of Poles	3
Current Rating	200 A
Voltage Rating	240 V AC
Enclosure Rating NEMA	NEMA 1
Motor power hp	15 hp at 240 V AC 60 Hz for 1 phase motors 25 hp at 240 V AC 60 Hz for 3 phase motors 60 hp at 240 V AC 60 Hz for 3 phase motors

Complementary

Short Circuit Current Rating	100 kA maximum depending on fuse H, K or R
Fuse type	H, K or R
Mounting Type	Surface
Electrical Connection	Lugs
Wiring configuration	4-wire (3PH + G)
Wire Size	AWG 6...250 kcmil aluminium/copper
Tightening torque	275 lbf.in (31.07 N.m) (AWG 6...250 kcmil)
Depth	8.25 in (209.55 mm)
Width	19 in (482.60 mm)
Height	29 in (736.60 mm)
Net Weight	55.49 lb(US) (25.17 kg)

Environment

Certifications	UL listed file E2875
----------------	----------------------

Ordering and shipping details

Category	00006-D & DU SW, NEMA1, 30-200A
Discount Schedule	DE1A
GTIN	785901461470
Returnability	Yes
Country of origin	US

Packing Units

Unit Type of Package 1	PCE
Number of Units in Package 1	1
Package 1 Height	8.60 in (21.844 cm)
Package 1 Width	19.30 in (49.022 cm)
Package 1 Length	30.50 in (77.47 cm)
Package 1 Weight	43.25 lb(US) (19.618 kg)
Unit Type of Package 2	PAL
Number of Units in Package 2	15
Package 2 Height	45.30 in (115.062 cm)
Package 2 Width	40.00 in (101.6 cm)
Package 2 Length	48.00 in (121.92 cm)
Package 2 Weight	932.00 lb(US) (422.748 kg)

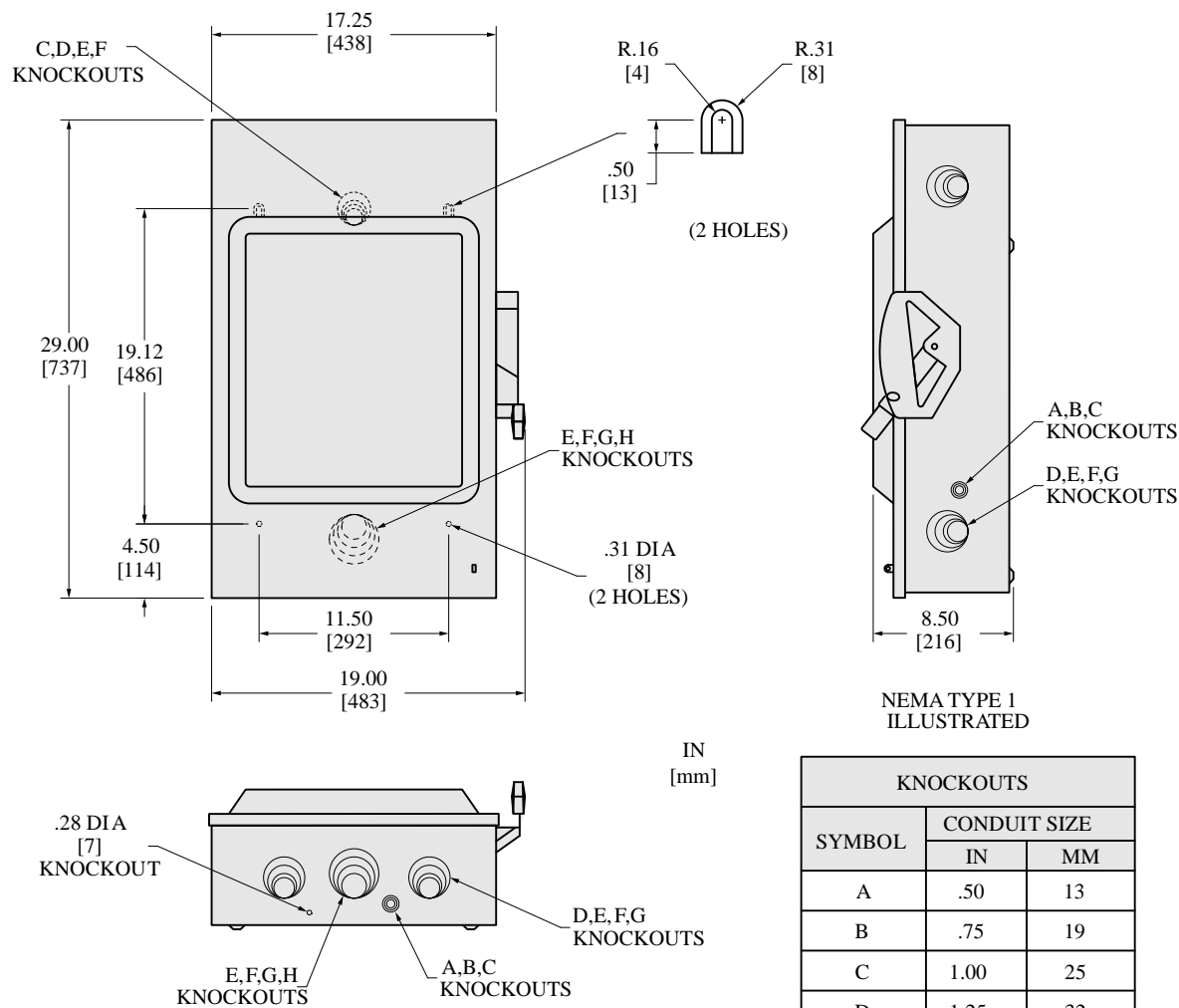
Offer Sustainability

Sustainable offer status	Green Premium product
California proposition 65	WARNING: This product can expose you to chemicals including: Lead and lead compounds, which is known to the State of California to cause cancer and birth defects or other reproductive harm. For more information go to www.P65Warnings.ca.gov
REACH Regulation	REACH Declaration
REACH free of SVHC	Yes
EU RoHS Directive	Compliant EU RoHS Declaration
Toxic heavy metal free	Yes
Mercury free	Yes
RoHS exemption information	Yes
China RoHS Regulation	China RoHS declaration Pro-active China RoHS declaration (out of China RoHS legal scope)
Environmental Disclosure	Product Environmental Profile
PVC free	Yes

Contractual warranty

Warranty	18 months
----------	-----------

Dimensions

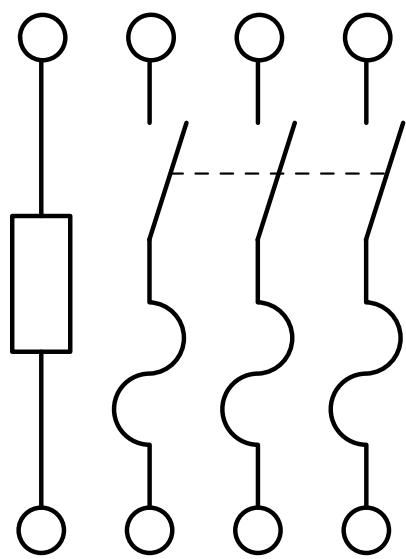


ALL DIMENSIONS ARE APPROXIMATE
REFER TO TECHNICAL DRAWINGS AND DOCUMENTATION

KNOCKOUTS		
SYMBOL	CONDUIT SIZE	
	IN	MM
A	.50	13
B	.75	19
C	1.00	25
D	1.25	32
E	1.50	38
F	2.00	51
G	2.50	64
H	3.00	76

Wiring Diagram

FUSIBLE



D324N

Recommended replacement(s)