

# Product data sheet

Specifications

SQUARE D

Green Premium™



Safety switch, general duty, non fusible, 200A, 3 poles, 60 hp, 240 VAC, NEMA 1

DU324

Product availability : Stock - Normally stocked in distribution facility

## Main

Product	Single Throw Safety Switch
Duty Rating	General duty
Device Application	Residential
Disconnect Type	Non-fusible disconnect switch
Factory Installed Neutral	None
Phase	3 phase
Number of Poles	3
Current Rating	200 A
Voltage Rating	240 V AC
Enclosure Rating NEMA	NEMA 1
Motor power hp	15 hp at 240 V AC 60 Hz for 1 phase motors 60 hp at 240 V AC 60 Hz for 3 phase motors

## Complementary

Mounting Type	Surface
Electrical Connection	Lugs
Wiring configuration	3-wire
Wire Size	AWG 6...250 kcmil aluminium/copper
Tightening torque	275 lbf.in (31.07 N.m) (AWG 6...250 kcmil)
Depth	8.25 in (209.55 mm)
Width	19 in (482.60 mm)
Height	29 in (736.60 mm)
Net Weight	52.01 lb(US) (23.59 kg)

## Environment

Certifications	UL listed file E2875
----------------	----------------------

## Ordering and shipping details

Category	00006-D & DU SW, NEMA1, 30-200A
----------	---------------------------------

Discount Schedule	DE1A
GTIN	785901491866
Returnability	Yes
Country of origin	US

### Packing Units

Unit Type of Package 1	PCE
Number of Units in Package 1	1
Package 1 Height	8.50 in (21.59 cm)
Package 1 Width	19.40 in (49.276 cm)
Package 1 Length	30.70 in (77.978 cm)
Package 1 Weight	39.90 lb(US) (18.098 kg)
Unit Type of Package 2	PAL
Number of Units in Package 2	15
Package 2 Height	46.50 in (118.11 cm)
Package 2 Width	40.00 in (101.6 cm)
Package 2 Length	50.00 in (127.0 cm)
Package 2 Weight	630.00 lb(US) (285.763 kg)

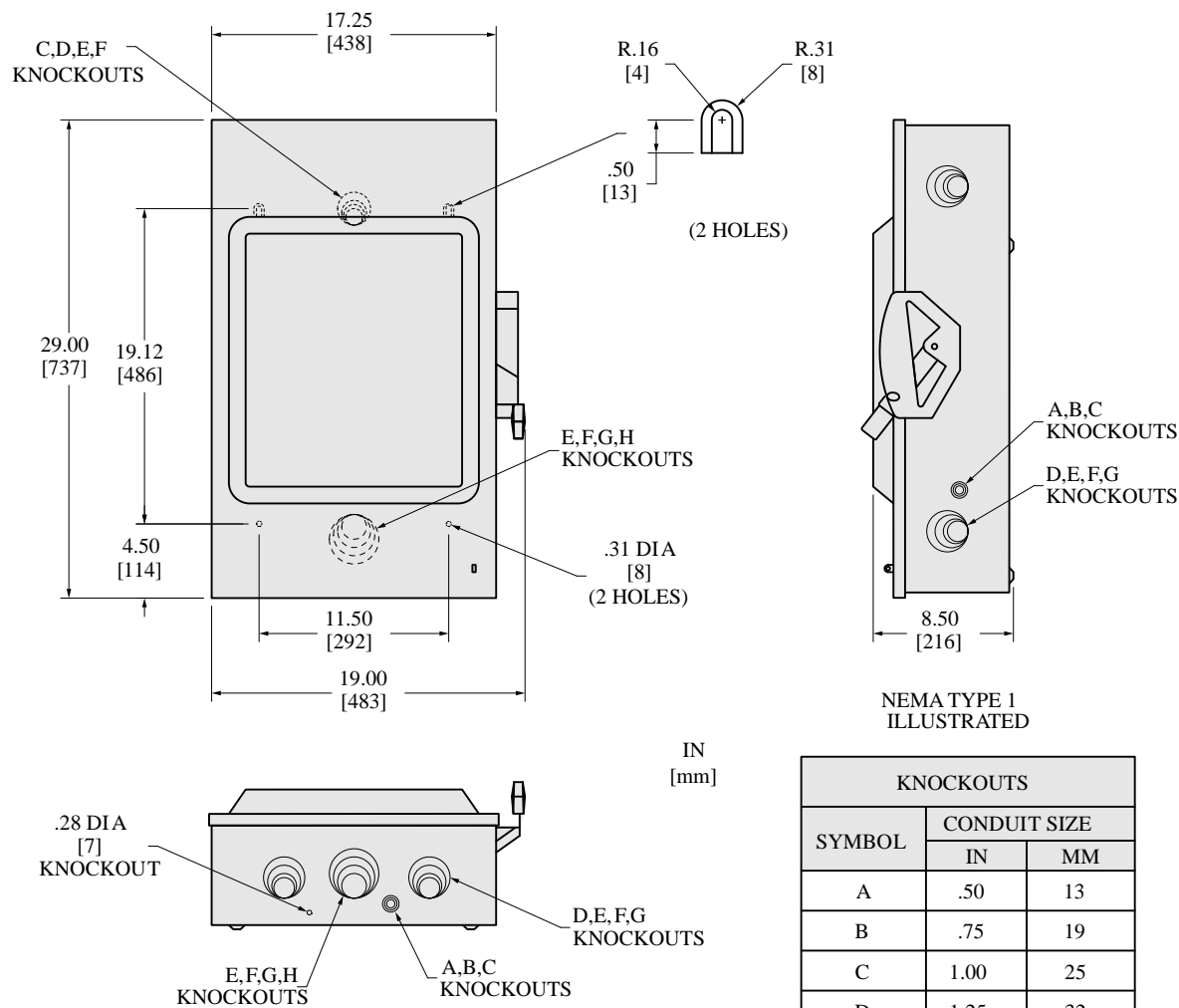
### Offer Sustainability

Sustainable offer status	Green Premium product
California proposition 65	WARNING: This product can expose you to chemicals including: Lead and lead compounds, which is known to the State of California to cause cancer and birth defects or other reproductive harm. For more information go to <a href="http://www.P65Warnings.ca.gov">www.P65Warnings.ca.gov</a>
REACH Regulation	<a href="#">REACH Declaration</a>
REACH free of SVHC	Yes
EU RoHS Directive	Compliant <a href="#">EU RoHS Declaration</a>
Toxic heavy metal free	Yes
Mercury free	Yes
RoHS exemption information	<a href="#">Yes</a>
China RoHS Regulation	<a href="#">China RoHS declaration</a> Pro-active China RoHS declaration (out of China RoHS legal scope)
Environmental Disclosure	<a href="#">Product Environmental Profile</a>
PVC free	Yes

### Contractual warranty

Warranty	18 months
----------	-----------

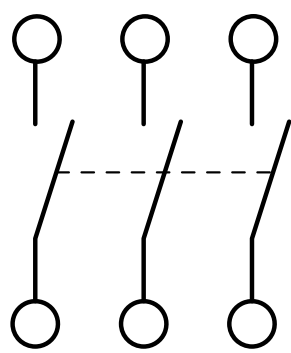
Dimensions



ALL DIMENSIONS ARE APPROXIMATE  
REFER TO TECHNICAL DRAWINGS AND DOCUMENTATION

KNOCKOUTS		
SYMBOL	CONDUIT SIZE	
	IN	MM
A	.50	13
B	.75	19
C	1.00	25
D	1.25	32
E	1.50	38
F	2.00	51
G	2.50	64
H	3.00	76

NOT FUSIBLE



DU324

Recommended replacement(s)