

Seeeduino Cortex-M0+

SKU 102010248

The Seeeduino Cortex-M0+ features an Atmel SAMD21 MCU which is fully compatible with Arduino Zero.

The Seeeduino Cortex-M0+ features an Atmel SAMD21 MCU which is based on a 32-bit ARM® Cortex®-M0+ processor. With the help of this powerful core, SAMD21 is much more powerful than AVR and can achieve many functions and more complex calculations that cannot be implemented on AVR chips.

The Seeeduino M0+ is a brand new product line that is fully compatible with Arduino Zero and we currently have Seeeduino Cortex-M0+ and Seeeduino Lotus Cortex-M0+ in this serial.

The Seeeduino Cortex-M0+ has the same header pinout as the Seeeduino Lotus Cortex-M0+, including 14 digital I/O (10 PWM output) and 6 analog I/O. On the meantime, it provides 3 on-board Grove connector: two I2C and 1 UART. If you want to use more grove port, you can use a Base Shield V2 to work with this board.

On top of that, Seeeduino Cortex-M0+ is the first Seeeduino development board with a USB type C interface. USB Type C is the future trend: the plugs are reversible, higher data transfer rate, and more scalable functions. We will introduce more development boards with Type C. You can use type C to supply power and transmit data or use the 7~15V DC jack to supply power for this board.

Features

- ARM Cortex-M0+ CPU running at up to 48MHz
- 256KB in-system self-programmable Flash
- 32KB SRAM Memory
- Compatible with Arduino Zero
- 10-bit, 350kps Digital-to-Analog Converter (DAC)
- One 12-bit, 350kps Analog-to-Digital Converter (ADC) with up to 20 channels
- USB Type C for power and data

Hardware Overview

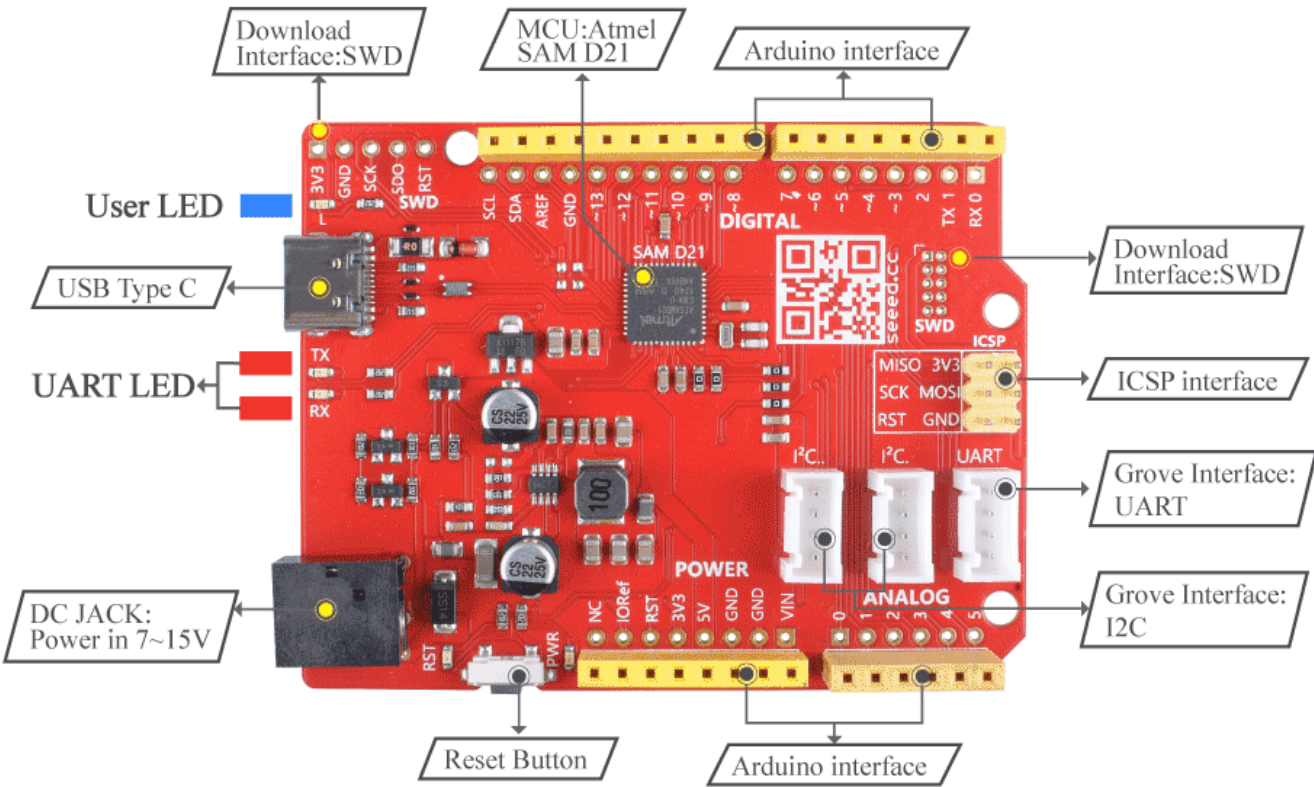


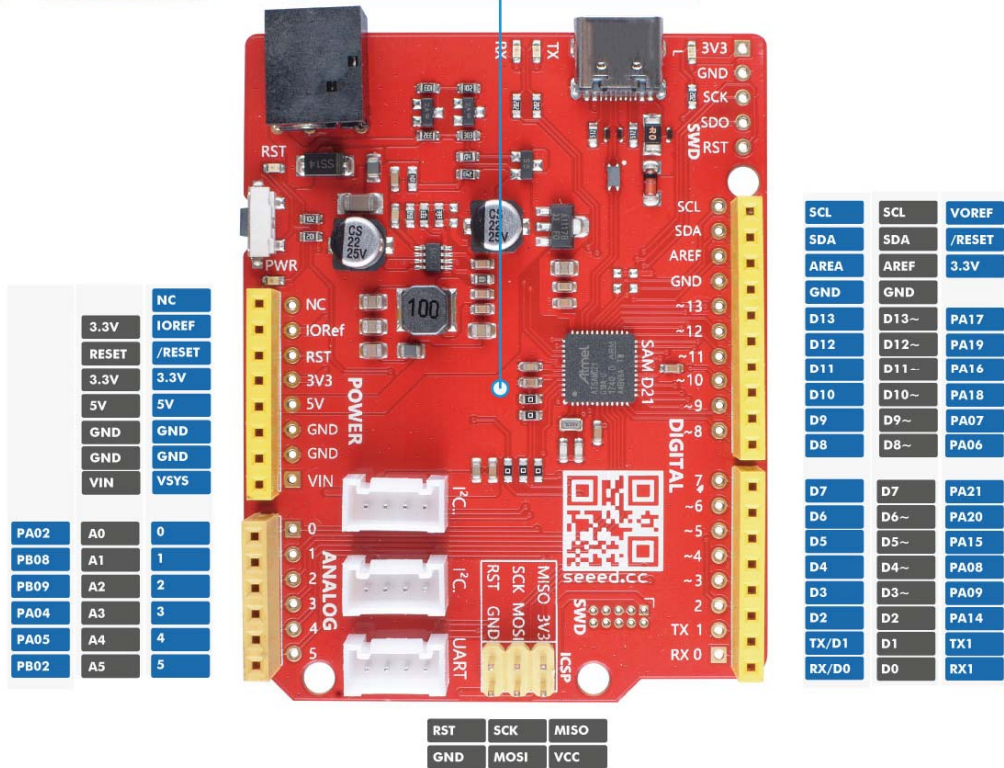
Figure 1. hardware overview

Pinout



Seeeduino Cortex-M0+

Figure



2. Pinout

ECCN/HTS

| | |
|----------|------------|
| ECCN | EAR99 |
| HSCODE | 8517709000 |
| USHSCODE | 85177000 |
| UPC | |

