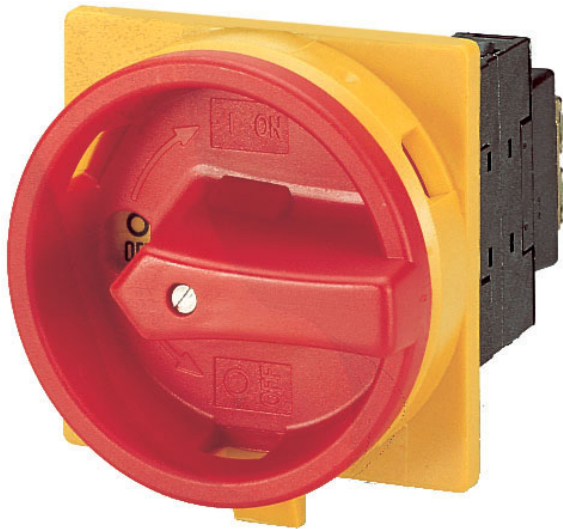


Type: **T0-2-1/EA/SVB**  
 Article No.: **038873**  
 Sales text **ON-OFF SWITCH**



**Ordering information**

|   |  |   |                                     |
|---|--|---|-------------------------------------|
|   |  |   | BME-CAT Fotos                       |
| Produktgruppen-Bezeichnung              |  |   | T0-...                              |
|   |  |   | Load current switches               |
|   |  |   | Main switches, maintenance switches |
| Design                                  |  |   | Flush mounting                      |
| Basic type for ... insert mounting form |  |   | T0-2-1/...                          |
| Mounting form                           |  |   | EA/SVB                              |
| No. of poles                            |  | M | 3                                   |
| Description                             |  |   | As Emergency-Stop device            |

**General**

|                             |              |               |  |
|-----------------------------|--------------|---------------|--|
| Standards                   |              |               | IEC/EN 60947, VDE 0660, IEC/EN 60204, CSA, UL<br>Switch-disconnectors to IEC/EN 60947-3<br>Load-break switches to IEC/EN 60947-3 |
| Lifespan, mechanical        | Operations   | $\times 10^6$ | 1  |
| Maximum operating frequency | Operations/h |               | 3000   |
| Climatic proofing           |              |               | Damp heat, constant, to IEC 60068-2-78; Damp heat, cyclical, to IEC 60068-2-30   |

|   |                             |                 |                                      |
|---|-----------------------------|-----------------|--------------------------------------|
| Ambient temperature                                 |                             |                 |                                      |
| Open  |                             | °C              | –25...50                             |
| Enclosed  |                             | °C              | –25...40                             |
| Mounting position                                   |                             |                 | As required                          |
| Mechanical shock resistance to IEC 60068–2–27       | Half-sinusoidal shock 20 ms | g               | > 15                                 |
| <b>Contacts</b>                                     |                             |                 |                                      |
| Rated operational voltage                           | $U_e$                       | V AC            | 690                                  |
| Rated impulse withstand voltage                     | $U_{imp}$                   | V AC            | 6000                                 |
| Overvoltage category/pollution degree               |                             |                 | III/3                                |
| Rated uninterrupted current                         |                             |                 |                                      |
| open  | $I_u$                       | A               | 20                                   |
| Enclosed  | $I_u$                       | A               | 20                                   |
| Load rating with intermittent operation, class 12   |                             |                 |                                      |
| AB 25 % DF  |                             | $\times I_e$    | 2                                    |
| AB 40 % DF  |                             | $\times I_e$    | 1,6                                  |
| AB 60 % DF  |                             | $\times I_e$    | 1,3                                  |
| Short-circuit rating                                |                             |                 |                                      |
| Fuse  |                             | A gG/gL         | 20                                   |
| Rated short-time withstand current (1 s current)    | $I_{cw}$                    | $A_{rms}$       | 320                                  |
| Safe isolation to VDE 0106 Part 101 and Part 101/A1 |                             |                 |                                      |
| between the contacts                                |                             | V AC            | 440                                  |
| Switching angles                                    |                             | °               | 90<br>60<br>45<br>30                 |
| Contact units                                       |                             |                 | 11                                   |
| Double-break contacts                               |                             |                 | max. 22                              |
| Current heat loss per contact at $I_e$              |                             | W               | 0,6                                  |
| <b>Terminal capacities</b>                          |                             |                 |                                      |
| Solid or stranded                                   |                             | mm <sup>2</sup> | 1 × (1 – 2.5)<br>2 × (1 – 2.5)       |
| Flexible with ferrule to DIN 46228                  |                             | mm <sup>2</sup> | 1 × (0.75 – 1.5)<br>2 × (0.75 – 1.5) |
| Terminal screw                                      |                             |                 | M3.5                                 |
| Tightening torque                                   |                             | Nm              | 1                                    |

## Switching capacity

|   |       |    |     |
|---|-------|----|-----|
| AC  |       |    |     |
| Rated making capacity $\cos = 0.35$                             |       | A  | 130 |
| Rated breaking capacity, motor load switch $\cos = 0.35$        |       |    |     |
| 230 V   |       | A  | 100 |
| 400 V   |       | A  | 110 |
| 500 V   |       | A  | 80  |
| 690 V   |       | A  | 60  |
| Rated operational current 440 V load-break switch AC-21A        | $I_e$ | A  | 20  |
| AC-3 motor load switch motor rating                             |       |    |     |
| 230 V   | $P$   | kW | 3   |
| 230 V Star-delta  | $P$   | kW | 4   |
| 400 V   | $P$   | kW | 4   |
| 400 V Star-delta  | $P$   | kW | 5,5 |
| 500 V   | $P$   | kW | 5,5 |
| 500 V Star-delta  | $P$   | kW | 7,5 |
| 690 V   | $P$   | kW | 4   |
| 690 V Star-delta  | $P$   | kW | 5,5 |
| AC-23A Motor load switches (main switches maintenance switches) |       |    |     |
| 230 V   | $P$   | kW | 3,5 |
| 400 V   | $P$   | kW | 6,5 |
| 500 V   | $P$   | kW | 13  |
| Rated operational current control switch AC-15                  |       |    |     |
| 230 V   | $I_e$ | A  | 6   |
| 400 V   | $I_e$ | A  | 4   |
| 500 V   | $I_e$ | A  | 2   |
| DC  |       |    |     |
| DC-1, Load-break switches L/R = 1 ms                            |       |    |     |
| Rated operational current                                       | $I_e$ | A  | 10  |
| Voltage per contact pair in series                              |       | V  | 60  |
| DC-21A  |       |    |     |
| Rated operational current 240 V                                 | $I_e$ | A  | 1   |

|   |                   |                |   |
|---|-------------------|----------------|---|
| 240 V Contacts                                |                   | Quantity       | 1   |
| DC–23A, motor load switch L/R = 15 ms         |                   |                |   |
| 24 V  |                   |                |   |
| Rated operational current                     | $I_e$             | A              | 10  |
| Contacts                                      |                   | Quantity       | 1   |
| 48 V  |                   |                |   |
| Rated operational current                     | $I_e$             | A              | 10  |
| Contacts                                      |                   | Quantity       | 2   |
| 60 V  |                   |                |   |
| Rated operational current                     | $I_e$             | A              | 10  |
| Contacts                                      |                   | Quantity       | 3   |
| 120 V   |                   |                |   |
| Rated operational current                     | $I_e$             | A              | 5   |
| Contacts                                      |                   | Quantity       | 3   |
| 240 V   |                   |                |   |
| Rated operational current                     | $I_e$             | A              | 5   |
| Contacts                                      |                   | Quantity       | 5   |
| DC–13, Control switches L/R = 50 ms           |                   |                |   |
| Rated operational current                     | $I_e$             | A              | 10  |
| Voltage per contact pair in series            |                   | V              | 32  |
| Control circuit reliability at 24 V DC, 10 mA | Fault probability | H <sub>F</sub> | < 10 <sup>-5</sup> , < 1 fault in 100000 operations |

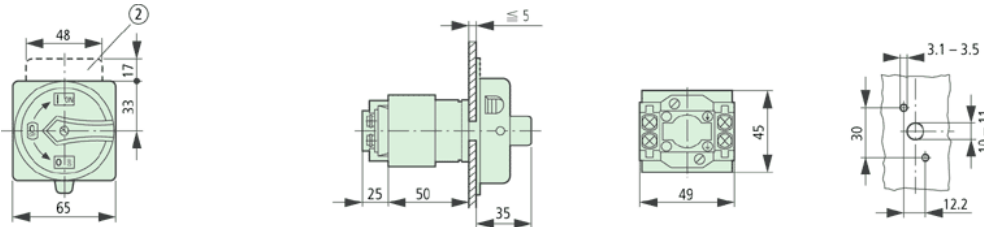
## Notes

### Notes

For mechanical shock resistance: T3.../I... >12g  
Applies to T0(3).../SVB: isolating characteristics to IEC/EN 60947 *U* for rated operational voltage up to 500 V AC  
Applies to rated uninterrupted current  $I_u$  of the contact: with T5–4–8344/I5 max. 95 A  
For terminal capacity solid, stranded and flexible:  
T0(3), (6), (8)...: Maximum of 2 cross-section sizes difference admissible between 2 conductors  
T5(B)–...: Maximum of 1 cross-section size

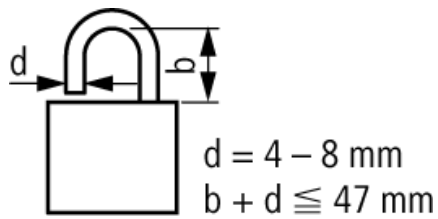
difference admissible  
between 2 conductors  
For type T8-3-8342/... the  
following applies: switching  
angle = 90° and flat  
connection = 1 busbar 25 ×  
5 or 2 busbars 20 × 3

### Dimensions



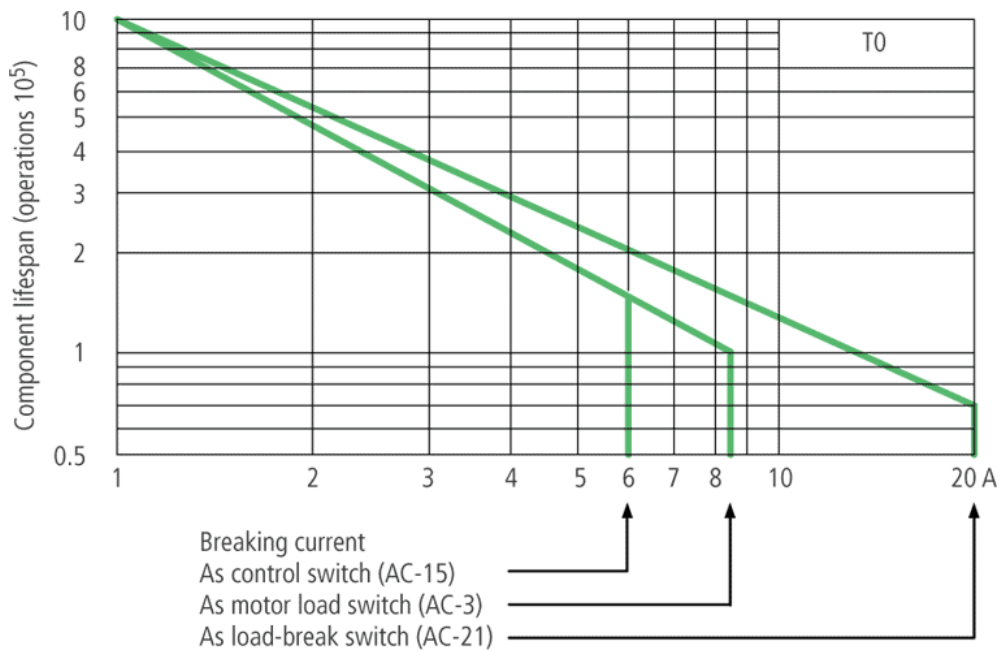
not included  
Depth of a contact unit: 9.5 mm

### Dimensions



3 padlocks

### Characteristic curve



---

For utilisation category AC-4 (extreme load: 100 % inching, reversing or plugging)  
The blocked rotor current of the motor should not exceed the rated current of the switch for AC-21A  
to ensure a reasonable device lifespan.

---

Moeller GmbH, Hein-Moeller-Str. 7-11, D-53115 Bonn  
E-Mail: [catalog@moeller.net](mailto:catalog@moeller.net), Internet: [www.moeller.net](http://www.moeller.net), <http://catalog.moeller.net>  
HPL-C2007G V2.1 © 2007 by Moeller GmbH