



EX-T4VH 335-12Z-3G/D

- Explosion protection for ATEX Zones 2 and 22
- Metal enclosure
- Good resistance to oil and petroleum spirit
- 40,5 mm x 76 mm x 38 mm
- Actuator heads can be repositioned by 4 x 90°
- Mounting details to EN 50041
- 1 Cable entry M 20 x 1.5
-

Data

Ordering data

| | |
|-------------------------------|----------------------|
| Product type description | EX-T4VH 335-12Z-3G/D |
| Article number (order number) | 101187235 |
| EAN (European Article Number) | 4030661335155 |
| eCl@ss number, version 12.0 | 27-27-26-01 |
| eCl@ss number, version 11.0 | 27-27-26-01 |
| eCl@ss number, version 9.0 | 27-27-26-01 |
| ETIM number, version 7.0 | EC000030 |
| ETIM number, version 6.0 | EC000030 |

Approvals - Standards

| | |
|--------------|-------|
| Certificates | cULus |
|--------------|-------|

Explosion protection

| | |
|-----------------------------------|--|
| Explosion protection: regulations | EN IEC 60079-0 EN IEC 60079-15 EN 60079-31 |
|-----------------------------------|--|

| | |
|----------------------------------|--|
| Explosion protection zones | 2 22 |
| Explosion protection category | 3G 3D |
| Explosion protection designation | ⊕ II 3G Ex nC IIC T5 Gc X ⊕ II 3D Ex tc IIIC T90°C Dc X |
| Manufacturer declaration | ATEX Zone 2 and 22 |

General data

| | |
|---------------------------|--------------------------|
| Housing construction form | Norm construction design |
| Actuator type to EN 50041 | A |
| Housing material | Aluminium |
| Housing coating material | painted |
| Lever material | Metal film |
| Gross weight | 305 g |

General data - Features

| | |
|------------------------------|-----|
| Safety functions | Yes |
| Number of auxiliary contacts | 1 |
| Number of safety contacts | 2 |

Safety classification

| | |
|--------------|----------------|
| Standards | EN ISO 13849-1 |
| Mission time | 20 Year(s) |

Safety classification - Safety outputs

| | |
|---|-----------------------|
| B _{10D} Normally-closed contact (NC) | 20,000,000 Operations |
|---|-----------------------|

Mechanical data

| | |
|-------------------|--------------|
| Actuating element | Roller lever |
|-------------------|--------------|

| | |
|---------------------------|---|
| Roller material | Plastic |
| Mechanical life, minimum | 30,000,000 Operations |
| Impact energy, maximum | 4 J |
| Actuating speed, maximum | 2.5 m/s |
| Note (Actuating speed) | Actuating speed with actuating angle 30° to switch axis |
| Note (Switchover time) | Switchover time in accordance with actuating speed |
| Actuating torque, minimum | 0.3 Nm |

Mechanical data - Connection technique

| | |
|--|---|
| Termination | Screw terminals M20 x 1.5 |
| Cable cross-section of the cable glands, minimum | 7 mm |
| Cable cross-section of the cable glands, maximum | 12 mm |
| Cable section, minimum | 0.75 mm ² |
| Cable section, maximum | 2.5 mm ² |
| Note (Cable section) | All indications including the conductor ferrules. |
| Wire cross-section | 13 AWG |

Mechanical data - Dimensions

| | |
|------------------|---------|
| Length of sensor | 60.6 mm |
| Width of sensor | 40.5 mm |
| Height of sensor | 134 mm |

Ambient conditions

| | |
|----------------------|----------------|
| Degree of protection | IP67 |
| Ambient temperature | -20 ... +60 °C |

Ambient conditions - Insulation values

| | |
|---|---------|
| Rated insulation voltage U_i | 250 VAC |
| Rated impulse withstand voltage U_{imp} | 4 kV |

Electrical data

| | |
|--------------------------------------|------------------------|
| Thermal test current | 10 A |
| Utilisation category AC-15 | 230 VAC |
| Utilisation category AC-15 | 4 A |
| Utilisation category DC-13 | 24 VDC |
| Utilisation category DC-13 | 4 A |
| Switching element | NO contact, NC contact |
| Switching principle | Slow action |
| Bounce duration, maximum | 2 ms |
| Switching frequency | 5,000 /h |
| Material of the contacts, electrical | Silver |

Ordering code

Product type description:

EX-(1)(2) 335-(3)Z(4)-(5)-(6)-(7)-3G/D

(1)

| | |
|----------|----------------------------|
| Z | Snap action |
| T | Slow action (not for AF/S) |

(2)

| | |
|----------------|--|
| S | Plunger S |
| R | Roller plunger R |
| H | Roller lever H |
| 10H | Rod lever 10H |
| 7H | Roller lever 7H |
| 7H-2138 | Roller lever 7H for position switches with safety function |
| 1K | Offset roller lever 1K |
| 3K | Angle roller lever 3K |

(3)

| | |
|-----------|----------------------------|
| 11 | 1 NO contacts/1 NC contact |
|-----------|----------------------------|

| | |
|--------------|--|
| 02 | 2 NC contact |
| 20 | 2 NO contacts (not suitable for safety applications) |
| 01/01 | 1 NC contact left / 1 NC contact right |
| 12 | 1 NO contact/2 NC contacts |
| 03 | 3 NC contact |
| (4) | |
| H | Slow action with staggered contacts |
| UE | Slow action with overlapping contacts |
| (5) | |
| 1297 | Enclosure with transverse slotted holes |
| (6) | |
| 2138 | Roller lever 7H for position switches with safety function |
| (7) | |
| 1637 | Gold-plated contacts |

Pictures

Product picture (catalogue individual photo)



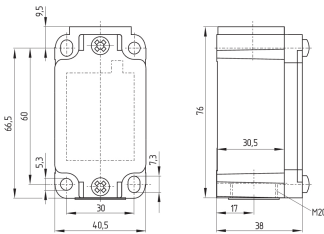
ID: k335hf01

| 1.1 MB | .jpg | 352.778 x 834.319 mm - 1000 x 2365 px - 72 dpi

| 106.3 kB | .png | 74.083 x 174.978 mm - 210 x 496 px - 72 dpi

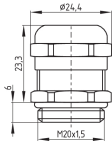
| 34.5 kB | .jpg | 52.211 x 123.472 mm - 148 x 350 px - 72 dpi

Dimensional drawing basic component



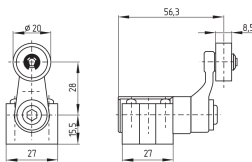
ID: k-335g01
 | 27.9 kB | .cdr |
 | 4.1 kB | .png | 74.083 x 52.211 mm - 210 x 148 px - 72 dpi
 | 126.8 kB | .jpg | 352.778 x 248.708 mm - 1000 x 705 px - 72 dpi

Dimensional drawing basic component



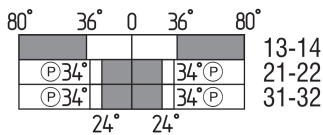
ID: 1xzm1g07
 | 2.5 kB | .png | 74.083 x 51.153 mm - 210 x 145 px - 72 dpi
 | 46.3 kB | .jpg | 352.778 x 243.769 mm - 1000 x 691 px - 72 dpi

Dimensional drawing actuator



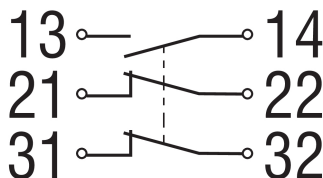
ID: 1h336g01
 | 65.6 kB | .cdr |
 | 4.1 kB | .png | 74.083 x 51.858 mm - 210 x 147 px - 72 dpi
 | 84.5 kB | .jpg | 352.778 x 247.297 mm - 1000 x 701 px - 72 dpi

Switch travel diagram



ID: kh335s18
 | 27.2 kB | .cdr |
 | 2.8 kB | .png | 74.083 x 29.281 mm - 210 x 83 px - 72 dpi
 | 92.1 kB | .jpg | 352.778 x 139.347 mm - 1000 x 395 px - 72 dpi

Diagram



ID: k2o1sk02
 | 82.3 kB | .jpg | 352.778 x 193.322 mm - 1000 x 548 px - 72 dpi
 | 3.2 kB | .png | 74.083 x 40.569 mm - 210 x 115 px - 72 dpi

Schmersal Ltd., Sparrowhawk Close, WR14 1GL Malvern

The details and data referred to have been carefully checked. Images may diverge from original. Further technical data can be found in the manual. Technical amendments and errors possible.

Generated on: 14/02/2024, 05:10