



## EX-TR335-11Y

- Ex-Zone 1 and 21
- Metal enclosure
- Good resistance to oil and petroleum spirit
- 40,5 mm x 76 mm x 38 mm
- Actuator heads can be repositioned by 4 x 90°
- Mounting details to EN 50041
- 1 Cable entry M 20 x 1.5
- 

## Data

### Ordering data

Product type description	EX-TR335-11Y
Article number (order number)	101212055
EAN (European Article Number)	4030661490717
eCl@ss number, version 12.0	27-27-26-01
eCl@ss number, version 11.0	27-27-26-01
eCl@ss number, version 9.0	27-27-26-01
ETIM number, version 7.0	EC000030
ETIM number, version 6.0	EC000030

### Approvals - Standards

Certificates	cULus IEC Ex CCC CCC EX DEKRA
--------------	---

### Explosion protection

Explosion protection: regulations	EN IEC 60079-0 EN 60079-1 EN 60079-7 EN 60079-31
Explosion protection zones	1 21
Explosion protection category	2G 2D
Explosion protection designation	⊕ II 2G Ex d e IIC T6 Gb ⊕ II 2D Ex tb IIIC T80°C Db

## General data

Standards	BG-GS-ET-15 EN IEC 60947-5-1
Housing construction form	Norm construction design
Actuator type to EN 50041	C
Housing material	Metal, zinc die-cast
Housing coating material	painted
Gross weight	320 g

## General data - Features

Safety functions	Yes
Number of auxiliary contacts	1
Number of safety contacts	1

## Safety classification

Standards	EN ISO 13849-1
Mission time	20 Year(s)

## Safety classification - Safety outputs

B <sub>10D</sub> Normally-closed contact (NC)	20,000,000 Operations
---	-----------------------

## Mechanical data

Actuating element	Roller plunger
Mechanical life, minimum	1,000,000 Operations
Impact energy, maximum	7 J
Actuating force, minimum	17 N
Actuating speed, maximum	1 m/s
Note (Actuating speed)	Actuating speed with actuating angle 30° to switch axis

## Mechanical data - Connection technique

Termination	Screw terminals M20 x 1.5
Cable cross-section of the cable glands, minimum	7 mm
Cable cross-section of the cable glands, maximum	12 mm
Cable section, minimum	1 mm <sup>2</sup>
Cable section, maximum	2.5 mm <sup>2</sup>
Note (Cable section)	All indications including the conductor ferrules.
Wire cross-section	13 AWG

## Mechanical data - Dimensions

Length of sensor	38 mm
Width of sensor	40.5 mm
Height of sensor	116.6 mm

## Ambient conditions

Degree of protection	IP65
Ambient temperature, maximum (Cable section 1mm <sup>2</sup> )	+50 °C
Ambient temperature, maximum (Cable section 2.5mm <sup>2</sup> )	+55 °C

## Ambient conditions - Insulation values

Rated insulation voltage $U_i$	250 VAC 500 V
Rated impulse withstand voltage $U_{imp}$	4 kV

## Electrical data

Thermal test current	5 A
Utilisation category AC-15	230 VAC
Utilisation category DC-13	24 VDC
Switching element	NO contact, NC contact
Switching principle	Slow action
Bounce duration, maximum	3 ms
Switching frequency	1,800 /h
Material of the contacts, electrical	Silver

## Scope of delivery

Scope of delivery	Ex-certified screwed cable gland
-------------------	----------------------------------

## Ordering code

Product type description:  
EX-T(1) 335-(2)Y(3)-(4)-(5)

(1)

<b>S</b>	Plunger S
<b>R</b>	Roller plunger R
<b>H</b>	Roller lever H
<b>10H</b>	Rod lever 10H
<b>7H</b>	Roller lever 7H
<b>7H-2138</b>	Roller lever 7H for position switches with safety function
<b>1K</b>	Offset roller lever 1K
<b>3K</b>	Angle roller lever 3K

(2)

<b>11</b>	1 NO contacts/1 NC contact
<b>02</b>	2 NC contact
<b>20</b>	2 NO contacts (not suitable for safety applications)

(3)

<b>UE</b>	Slow action with overlapping contacts
<b>without</b>	Slow action with staggered contacts

(4)

<b>2138</b>	Roller lever 7H for position switches with safety function
-------------	--

(5)

<b>RMS</b>	Roller made from brass
------------	------------------------

## Pictures

### Product picture (catalogue individual photo)



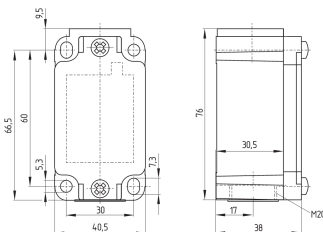
ID: k335rf01

| 727.6 kB | .jpg | 352.778 x 767.292 mm - 1000 x 2175 px - 72 dpi

| 71.3 kB | .png | 74.083 x 160.867 mm - 210 x 456 px - 72 dpi

| 27.7 kB | .jpg | 56.797 x 123.472 mm - 161 x 350 px - 72 dpi

### Dimensional drawing basic component



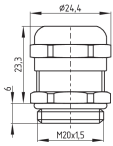
ID: k-335g01

| 27.9 kB | .cdr |

| 4.1 kB | .png | 74.083 x 52.211 mm - 210 x 148 px - 72 dpi

| 126.8 kB | .jpg | 352.778 x 248.708 mm - 1000 x 705 px - 72 dpi

### Dimensional drawing basic component

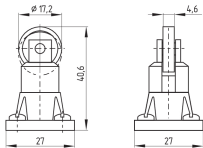


ID: 1xzm1g07

| 2.5 kB | .png | 74.083 x 51.153 mm - 210 x 145 px - 72 dpi

| 46.3 kB | .jpg | 352.778 x 243.769 mm - 1000 x 691 px - 72 dpi

## Dimensional drawing actuator



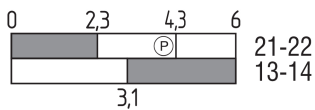
ID: 1r336g01

| 51.1 kB | .cdr |

| 6.6 kB | .png | 74.083 x 52.211 mm - 210 x 148 px - 72 dpi

| 66.1 kB | .jpg | 352.778 x 248.003 mm - 1000 x 703 px - 72 dpi

## Switch travel diagram



ID: kr335s02

| 20.3 kB | .cdr |

| 1.8 kB | .png | 74.083 x 22.931 mm - 210 x 65 px - 72 dpi

| 43.3 kB | .jpg | 352.778 x 109.714 mm - 1000 x 311 px - 72 dpi

## Operating principle



ID: 235rz01

| 15.2 kB | .cdr |

| 149.7 kB | .jpg | 352.778 x 799.394 mm - 1000 x 2266 px - 72 dpi

| 2.9 kB | .png | 74.083 x 167.922 mm - 210 x 476 px - 72 dpi

Schmersal Ltd., Sparrowhawk Close, WR14 1GL Malvern

The details and data referred to have been carefully checked. Images may diverge from original. Further technical data can be found in the manual. Technical amendments and errors possible.

Generated on: 14/02/2024, 05:19