



EX-AZ 3350-12ZUEK-U270-3D

- Actuating head rotated by 270°
- Ex-Zone 22
- Metal enclosure
- 40,5 mm x 114 mm x 38 mm
- Latching handle
- 1 Cable entry M 20 x 1.5
- Centring device available
- High level of contact reliability with low voltages and currents
- SZ 415 lockout tag to prevent unintended closing

Data

Ordering data

Product type description	EX-AZ 3350-12ZUEK-U270-3D
Article number (order number)	101185216
EAN (European Article Number)	4030661345918
eCl@ss number, version 12.0	27-27-26-02
eCl@ss number, version 11.0	27-27-26-02
eCl@ss number, version 9.0	27-27-26-02
ETIM number, version 7.0	EC002592
ETIM number, version 6.0	EC002592

Approvals - Standards

Certificates	TÜV
--------------	-----

Explosion protection

Explosion protection: regulations	EN IEC 60079-0 EN 60079-31
Explosion protection zones	22
Explosion protection category	3D
Explosion protection designation	⊕ II 3D Ex tc III C T90°C Dc X

General data

Standards	EN IEC 60947-5-1
Housing material	Light alloy die-casting
Housing coating material	painted
Gross weight	195 g

General data - Features

Number of auxiliary contacts	1
Number of safety contacts	2

Safety classification

Standards	EN ISO 13849-1
Mission time	20 Year(s)

Safety classification - Safety outputs

B _{10D} Normally-closed contact (NC)	2,000,000 Operations
B _{10D} Normally open contact (NO)	1,000,000 Operations
Note (B _{10D} Normally open contact (NO))	at 10% I _e and ohmic load

Mechanical data

Mechanical life, minimum	1,000,000 Operations
Door hinge	Right
Positive break travel	10.7 mm

Positive break force, minimum	5 N
Note (Positive break force)	per NC
Actuating speed, maximum	1 m/s

Mechanical data - Connection technique

Termination	Screw terminals M20 x 1.5
Cable cross-section of the cable glands, minimum	6 mm
Cable cross-section of the cable glands, maximum	12 mm
Cable section, minimum	0.75 mm ²
Cable section, maximum	2.5 mm ²
Note (Cable section)	All indications including the conductor ferrules.

Mechanical data - Dimensions

Length of sensor	38 mm
Width of sensor	40.5 mm
Height of sensor	114 mm

Ambient conditions

Degree of protection	IP67
Ambient temperature	-10 ... +60 °C

Ambient conditions - Insulation values

Rated insulation voltage U_i	250 VAC
Rated impulse withstand voltage U_{imp}	4 kV

Electrical data

Thermal test current	10 A
Utilisation category AC-15	230 VAC
Utilisation category AC-15	4 A

Utilisation category DC-13	24 VDC
Utilisation category DC-13	4 A
Switching element	NO contact, NC contact
Switching principle	Slow action
Material of the contacts, electrical	Silver

Scope of delivery

Scope of delivery	Actuator must be ordered separately. Ex-certified screwed cable gland
-------------------	--

Ordering code

Product type description:
EX-AZ 3350-(1)-(2)-(3)-3D

(1)

03ZK	3 NC contact
12ZUEK	1 NO contact/2 NC contacts

(2)

without	-
1637	Gold-plated contacts

(3)

U90	Actuating head can be rotated 90° for door hinge left
U270	Actuating head can be rotated 270° for door hinge right

Pictures

Product picture (catalogue individual photo)



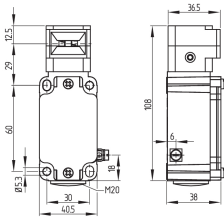
ID: kexazf15

| 752.1 kB | .jpg | 352.778 x 613.481 mm - 1000 x 1739 px - 72 dpi

| 59.0 kB | .png | 74.083 x 128.764 mm - 210 x 365 px - 72 dpi

| 39.0 kB | .jpg | 70.908 x 123.472 mm - 201 x 350 px - 72 dpi

Dimensional drawing basic component



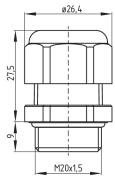
ID: 1x335g03

| 73.8 kB | .cdr |

| 10.1 kB | .png | 74.083 x 51.506 mm - 210 x 146 px - 72 dpi

| 104.4 kB | .jpg | 352.778 x 245.886 mm - 1000 x 697 px - 72 dpi

Dimensional drawing basic component

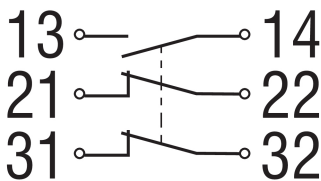


ID: 1xzm1g04

| 2.4 kB | .png | 74.083 x 51.153 mm - 210 x 145 px - 72 dpi

| 46.3 kB | .jpg | 352.778 x 243.769 mm - 1000 x 691 px - 72 dpi

Diagram

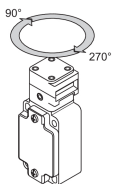


ID: k2o1sk02

| 82.3 kB | .jpg | 352.778 x 193.322 mm - 1000 x 548 px - 72 dpi

| 3.2 kB | .png | 74.083 x 40.569 mm - 210 x 115 px - 72 dpi

Operating principle



ID: 1az33e03

| 64.9 kB | .jpg | 352.778 x 247.297 mm - 1000 x 701 px - 72 dpi

| 7.6 kB | .png | 74.083 x 51.858 mm - 210 x 147 px - 72 dpi

The details and data referred to have been carefully checked. Images may diverge from original. Further technical data can be found in the manual. Technical amendments and errors possible.

Generated on: 14/02/2024, 06:31