

Please note that the data given here has been taken from the online catalog. For comprehensive information and data, please refer to the user documentation at <http://www.download.phoenixcontact.com>. The General Terms and Conditions of Use apply to Internet downloads.

## ▶ Extract from the online catalog



PCB, for screw and slip-on connection, for custom fitting electronic components.

Order No.	2792109
Ord designation	P 1-UEGM
EAN	4017918072575
Pack	10 Pcs.
Customs tariff	85340019
Weight/Piece	0,01316 KG
Catalog page information	Page 366 (CC-2005)

## ▶ Product notes

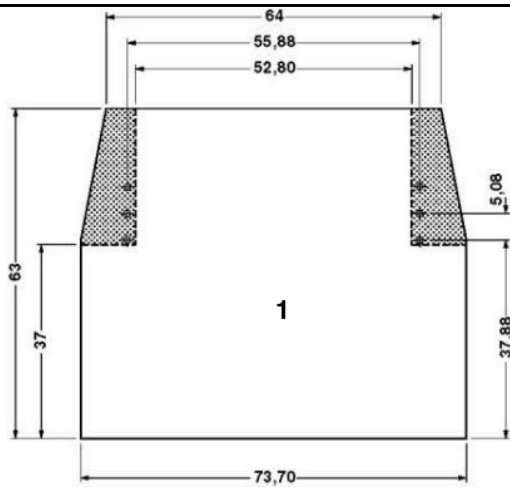
WEEE/RoHS-compliant since: 06/01/2005



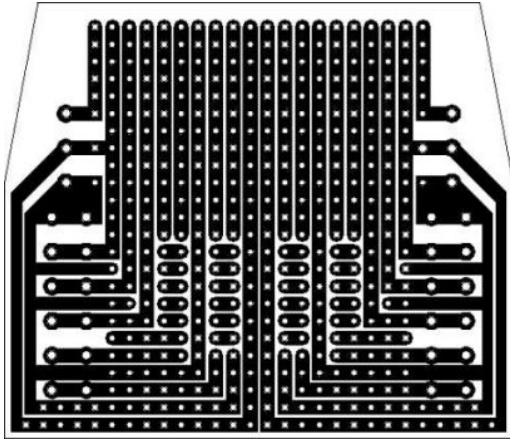
**IMPORTANT :** This date is valid for Customers in Germany only. Date Format is MM/DD/YYYY. Please contact your local in-country Phoenix Contact location or designated business partner for a Logistics Compliant date in your area. In order to guarantee delivery of RoHS-Compliant product, please purchase Phoenix Contact parts from authorized Phoenix Contact representatives and distributors.

## ▶ Drawings

### Dimensioned drawing



Schematic diagram



---

## ► Address

---

PHOENIX CONTACT GmbH & Co. KG

Flachsmarktstr. 8

32825 Blomberg

Germany

Phone +49 5235 3 00

Fax +49 5235 3 41200

<http://www.phoenixcontact.com>

Phoenix Contact

Technical modifications reserved;