

**RoHS
Compliant**



Features

- Dimensions: 26mm × 26mm × 22.7mm
- 50A of switching capability
- 125°C of operating ambient temperature
- SPST and SPDT contact form
- Available for Plastic sealed and unsealed type

Specification

Contact Data		
Contact Form	1 Form A, 1 Form C	
Contact Material	Ag Alloy	
Contact Rating	Standard: NO: 40A/14V DC, NC:30A/14V DC NO: 20A/28V DC, NC:10A/28V DC T: NO: 50A/14V DC,NC:30A/14V DC NO: 30A/28V DC,NC:10A/28V DC	
Contact Resistance	Max.50mΩ (24V DC 1A)	
Load	Max. Switching Voltage	75V DC
	Max. Switching Current	Make: 150A (NO,surge), Break: 50A (steady-state)
	Max. Continous Current	50A (125°C,1h)
	Min. Switching Load	1A 6V DC
Life	Electrical	100,000 Cycles
	Mechanical	1,000,000 Cycles (300 cycles/minutes)
Coil Data		
Nominal Coil Power	1.6W (Standard), 2W(T)	
Nominal Coil Power (With Resistor)	1.8W (Standard), 2.2W(T)	
General Data		
Insulation Resistance	Min.100MΩ 500V DC	
Dielectric Strength	Between open contacts	550V AC,50/60Hz,1 min
	Between coil and contacts	
Operate Time	Max. 10ms	
Release Time	Max. 10ms	
	Max.20ms (With Diode)	
Operating Temperature	-40°C to +125°C	
Humidity	5-95%RH, 50°C	
Shock Resistanc	294m/s ²	
Vibration Resistance	10Hz-22.3Hz,10mm Double Amplitude 22.3Hz-500Hz,98m/s ² (10g)	
Weight	Approximately 32g (Without Bracket), Approximately 35g (Bracket)	
Mechanic	Cover Strength: 200N (Pull/Press) Terminal Strength: 100N (Pull/Press) Terminal Bending: 10N (Each Direction)	

Note:Data shown are of initial value

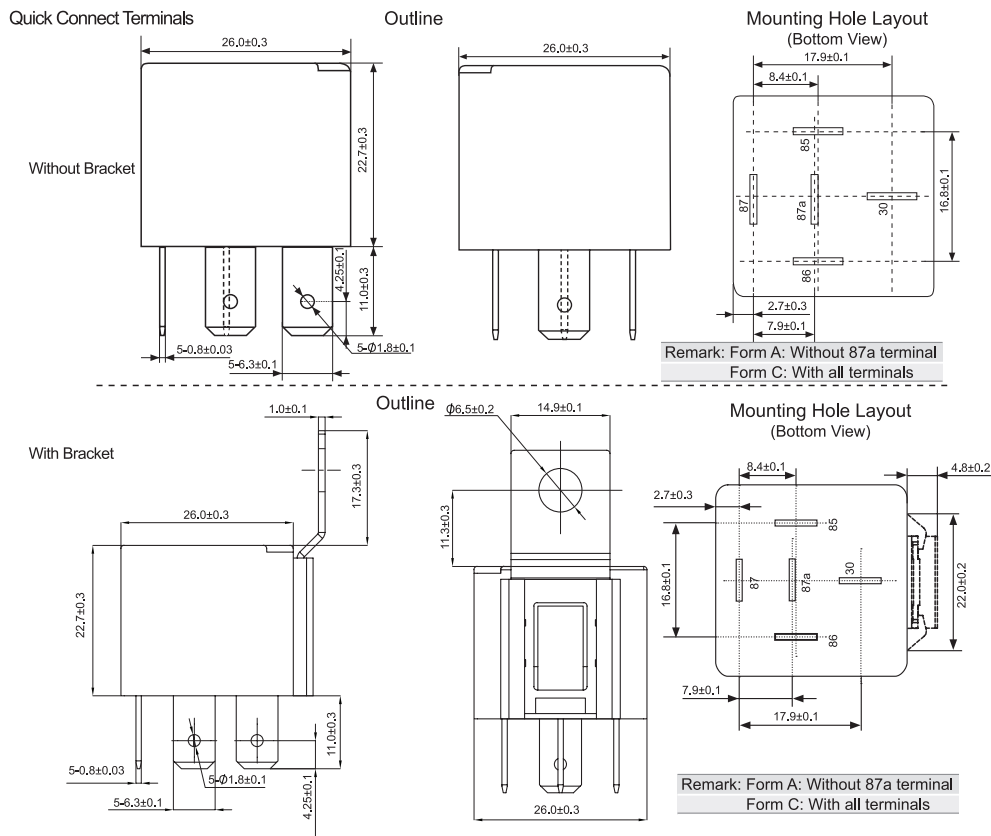
Newark.com/multicomp-pro
Farnell.com/multicomp-pro
sg.element14.com/b/multicomp-pro

Coil Data

Ambient Temperature: 23°C

Model	Nominal Voltage V DC	Coil Resistance $\Omega \pm 10\%$	Parallel Resistance $\Omega \pm 5\%$	Equivalent Resistance $\Omega \pm 10\%$	Operate Voltage $\leq V$ DC	Release Voltage \geq VDC	Coil Power W
MPCMA36-DC12V-A	12	90	--	--	7.8	1.2	1.6
MPCMA36-DC24V-A	24	360	--	--	16	2.4	
MPCMA36-DC12V-A-R	12	90	680	79.5	7.8	1.2	2
MPCMA36-DC24V-A-R	24	360	2700	317.6	16	2.4	1.8
MPCMA36-S-DC12V-A	12	72	--	--	7.8	1.2	2
MPCMA36-S-DC24V-A	24	288	--	--	16	2.4	
MPCMA36-S-DC12V-A-R	12	72	680	65.1	7.8	1.2	2.2
MPCMA36-S-DC24V-A-R	24	288	2700	260	16	2.4	

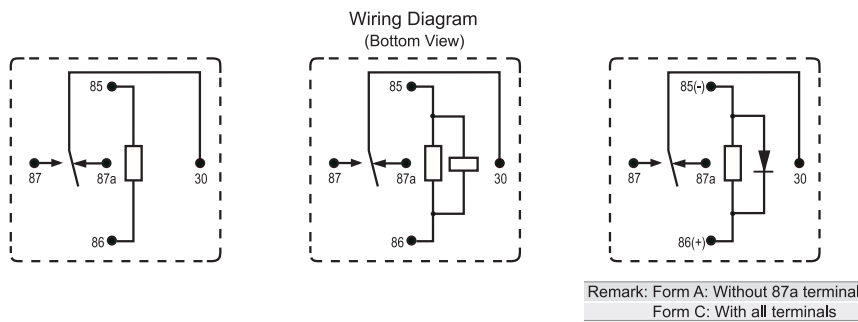
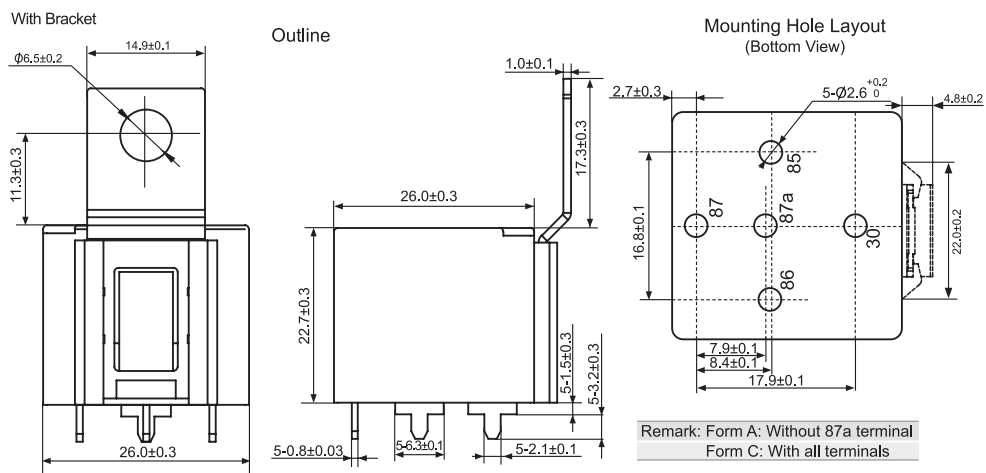
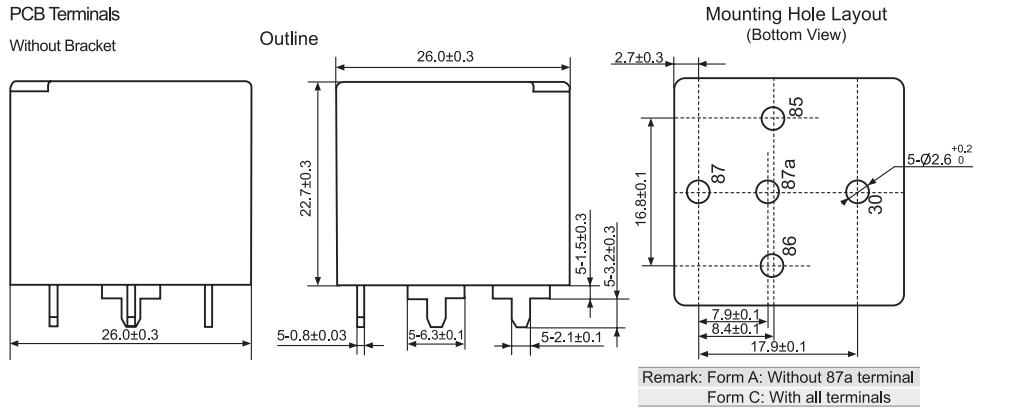
Outline, Wiring Diagram, Mounting Hole Layout



Dimensions : Millimetres

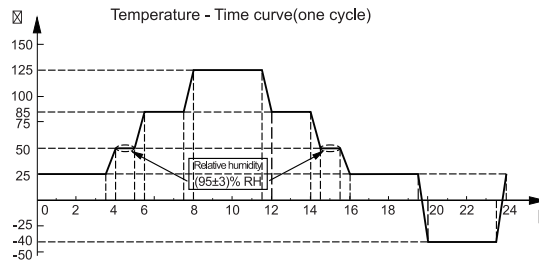
Newark.com/multicomp-pro
 Farnell.com/multicomp-pro
 sg.element14.com/b/multicomp-pro

Automotive Relay

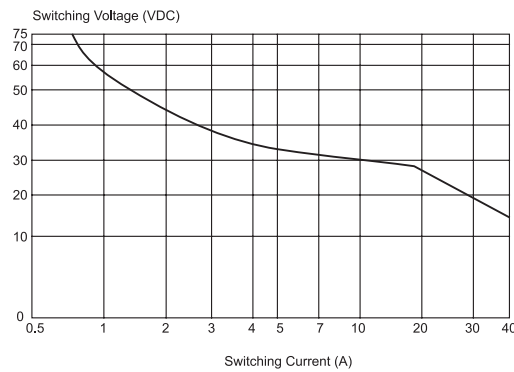


Reference Data

Temperature curve for electrical endurance test



Max. switching power curve



Part Number Table

Description	Part Number
Automotive Relay, Quick Connect Type, NO, 12V, 1.6W, 40A, Unsealed	MPCMA36-DC12V-A
Automotive Relay, Quick Connect Type, NO, 24V, 1.6W, 40A, Unsealed	MPCMA36-DC24V-A
Automotive Relay, Quick Connect Type, NO, 12V, 1.8W, 40A, Unsealed	MPCMA36-DC12V-A-R
Automotive Relay, Quick Connect Type, NO, 24V, 1.8W, 40A, Unsealed	MPCMA36-DC24V-A-R
Automotive Relay, Quick Connect Type, NO, 12V, 1.6W, 40A, Sealed	MPCMA36-S-DC12V-A
Automotive Relay, Quick Connect Type, NO, 24V, 1.6W, 40A, Sealed	MPCMA36-S-DC24V-A
Automotive Relay, Quick Connect Type, NO, 12V, 1.8W, 40A, Sealed	MPCMA36-S-DC12V-A-R
Automotive Relay, Quick Connect Type, NO, 24V, 1.8W, 40A, Sealed	MPCMA36-S-DC24V-A-R

Important Notice : This data sheet and its contents (the "Information") belong to the members of the AVNET group of companies (the "Group") or are licensed to it. No licence is granted for the use of it other than for information purposes in connection with the products to which it relates. No licence of any intellectual property rights is granted. The Information is subject to change without notice and replaces all data sheets previously supplied. The Information supplied is believed to be accurate but the Group assumes no responsibility for its accuracy or completeness, any error in or omission from it or for any use made of it. Users of this data sheet should check for themselves the Information and the suitability of the products for their purpose and not make any assumptions based on information included or omitted. Liability for loss or damage resulting from any reliance on the Information or use of it (including liability resulting from negligence or where the Group was aware of the possibility of such loss or damage arising) is excluded. This will not operate to limit or restrict the Group's liability for death or personal injury resulting from its negligence. Multicomp Pro is the registered trademark of Premier Farnell Limited 2019.