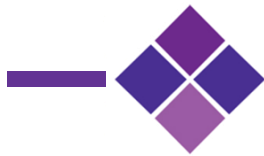




Industrial SD 3.0 Read-Only Mode (ROM) MLC



Version 1.2

Address: 28 Genting Ln, #09-03/04/05 Platinum 28,
Singapore 349585
Tel: +65-6493 5035
Fax: +65-6493 5037

Website: <http://www.flexxon.com>

Email: flexxon@flexxon.com

TABLE OF CONTENTS

1. GENERAL DESCRIPTION	1
1.1 Introduction	1
1.2 Product Overview	2
1.3 Workflow	3
2. PRODUCT SPECIFICATIONS	4
2.1 Performance.....	4
2.2 Power	4
2.3 MTBF	4
3. ENVIRONMENTAL SPECIFICATIONS.....	5
4. ELECTRICAL SPECIFICATIONS	6
4.1 DC Characteristics.....	6
4.1.1 Bus Operation Conditions for 3.3V Signaling.....	6
4.1.2 Bus Signal Line Load	7
4.2 AC Characteristic	8
4.2.1 SD Interface timing (Default).....	8
4.2.2 SD Interface Timing (High-Speed Mode)	9
4.2.3 SD Interface timing (SDR12, SDR25, SDR50 and SDR104 Modes).....	11
4.2.4 SD Interface timing (DDR50 Modes)	13
5. PAD ASSIGNMENT	15
5.1 Pad Assignment and Descriptions	15
6. REGISTERS	16
7. PHYSICAL DIMENSION	16
8. ORDERING INFORMATION.....	16

1. GENERAL DESCRIPTION

1.1 Introduction

The Read-Only Mode is highly effective in a memory device to ensure data security. Read-Only mode provides a tamper-proof data storage solution by making it unalterable and the crucial files remain safe.

FLEXXON Read Only Mode (ROM) SD Card provides security function to prevent the stored data from being stolen, tampered or modified by others. Once you activate the Read-Only mode into the memory card, all the stored data enables access for reading only. None can change, delete, or overwrite anything from the stored data. So, you can preserve the authenticity of the essential files into the memory card and prohibit it from the risk of alteration. Write access could only be enabled by authorized user with specific tool and correct password.

FLEXXON ROM SD Card plays an important role in various applications where ensuring data authenticity is extremely important. For example, in medical and healthcare facilities, financial institutes, business organizations, the cybersecurity industry, etc. will be beneficial by utilizing Read-Only Mode memory card.

The read only mode is an additional feature, which will not affect the standard product specification.

1.2 Product Overview

◆ Flash MLC	◆ Support SD System Specification 3.0
◆ Capacity 4GB to 256GB	◆ Support SD SPI Mode
◆ Support Data Encryption	◆ Support Auto Read Refreshment
◆ Read disturbance management	◆ Adaptive wear leveling
◆ Support management of sudden power fails	◆ SMART function support
◆ Temperature Range Operation (Gold): -25°C ~ 85°C Operation (Diamond): -40°C ~ 85°C ◆ Storage: -40°C ~ 85°C	

1.3 Workflow

FLEXXON ROM SD Card is a normal mode by default. User could set the password to enable read only mode by software tool.

Note: User is required to eject and re-insert the after set the password.

User could enable write access by the legal host with security tool and enter correct password. When user power off the host or reinsert the card, the card will return to read only mode.

Enable ROM Function by Software Tool and Password

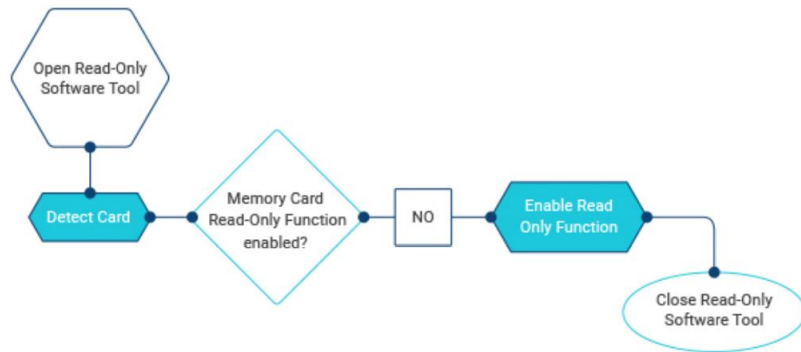


Figure 1-1: Enable ROM Function by software tool and password

Enable Write Access by software tool and password

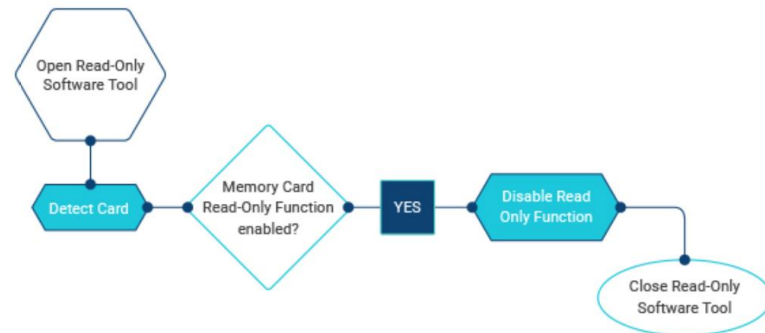


Figure 1-2: Enable Write Access by software tool and password

2. PRODUCT SPECIFICATIONS

2.1 Performance

Capacity	Sequential	
	Read (MB/s)	Write (MB/s)
4GB	90	25
8GB	90	25
16GB	90	25
32GB	90	45
64GB	90	70
128GB	90	70
256GB	90	70

Table 2-1 Performance of SD Card

NOTES:

1. The performance is obtained from TestMetrix
2. Performance may vary from flash configuration and platform.

2.2 Power

Capacity	Read (mA)	Write (mA)	Standby (uA)
4GB	180	85	220
8GB	180	85	220
16GB	180	95	230
32GB	180	120	245
64GB	180	190	290
128GB	180	190	320
256GB	180	200	470

Table 2-2 Typical Power Consumption of SD Card

2.3 MTBF

MTBF, an acronym for Mean Time Between Failures, is a measure of a device's reliability. Its value represents the average time between a repair and the next failure. The higher the MTBF value, the higher the reliability of the device. The predicted result of SD Card is more than 3,000,000 hours.

3. ENVIRONMENTAL SPECIFICATIONS

Test Items	Test Conditions
Storage Temperature	-40°C ~ 85°C
Operating Temperature	Gold: -25°C ~ 85°C Diamond: -40°C ~ 85°C
Storage Humidity	40°C, 93% RH
Operating Humidity	25°C, 95% RH
Shock	1500G, Half Sin Pulse Duration 0.5ms
Vibration	80Hz ~ 2000Hz/20G, 20Hz ~ 80Hz/1.52mm, 3 axis/30min
Drop	150cm free fall, 6 face of each unit
Bending	≥ 10N, Hold 1 min/5 times
Torque	0.1N-m or +/-2.5 deg, Hold 30 seconds/5 times
ESD	Contact: +/- 4KV each item 25 times Air: +/- 8KV 10 times

Table 3-1 Environmental Specification

4. ELECTRICAL SPECIFICATIONS

4.1 DC Characteristics

4.1.1 Bus Operation Conditions for 3.3V Signaling

Parameter	Symbol	Min.	Max	Unit	Condition
Supply Voltage	V _{DD}	2.7	3.6	V	
Output High Voltage	V _{OH}	0.75*V _{DD}		V	I _{OH} =-2mA V _{DD} Min
Output Low Voltage	V _{OL}		0.125*V _{DD}	V	I _{OL} =2mA V _{DD} Min
Input High Voltage	V _{IH}	0.625*V _{DD}	V _{DD} +0.3	V	
Input Low Voltage	V _{IL}	V _{SS} -0.3	0.25*V _{DD}	V	
Power Up Time			250	ms	From 0V to V _{DD} min

Table 4-1 Threshold Level for High Voltage Range

Parameter	Symbol	Min.	Max	Unit	Condition
Supply Voltage	V _{DD}	2.7	3.6	V	
Regulator Voltage	V _{DDIO}	1.7	1.95	V	Generated by V _{DD}
Output High Voltage	V _{OH}	1.4	-	V	I _{OH} =-2mA
Output Low Voltage	V _{OL}	-	0.45	V	I _{OL} =2mA
Input High Voltage	V _{IH}	1.27	2.00	V	
Input Low Voltage	V _{IL}	V _{SS} -0.3	0.58	V	

Table 4-2 Threshold Level for 1.8V Signaling

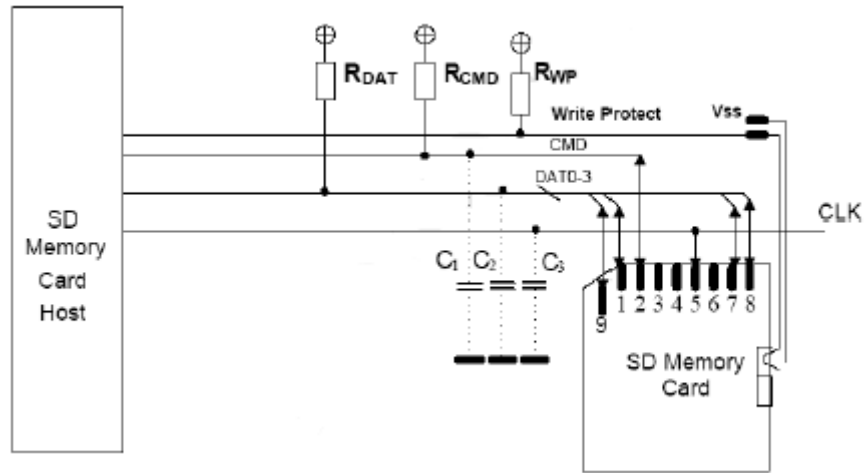
Parameter	Symbol	Min	Max.	Unit	Remarks
Input Leakage Current		-2	2	uA	DAT3 pull-up is disconnected.

Table 4-3 Input Leakage Current for 1.8V Signaling

Parameter	Symbol	Min	Max.	Unit	Remarks
Peak voltage on all lines		-0.3	$V_{DD}+0.3$	V	
All Inputs					
Input Leakage Current		-10	10	uA	
All Outputs					
Output Leakage Current		-10	10	uA	

Table 4-4 Peak Voltage and Leakage Current

4.1.2 Bus Signal Line Load



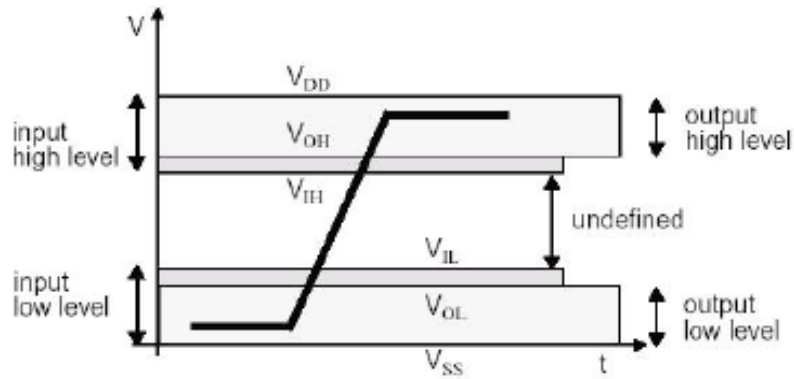
Bus Operation Conditions – Signal Line’s Load

$$\text{Total Bus Capacitance} = C_{\text{HOST}} + C_{\text{BUS}} + N C_{\text{CARD}}$$

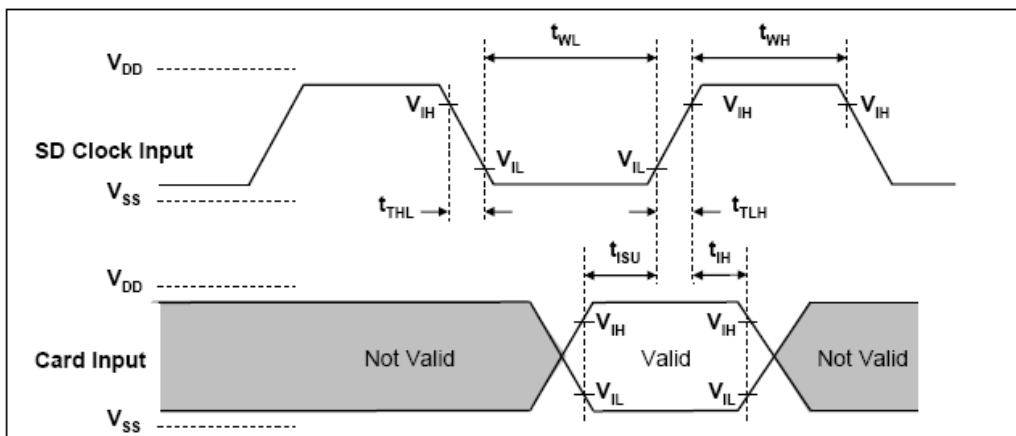
Parameter	symbol	Min	Max	Unit	Remark
Pull-up resistance	R_{CMD} R_{DAT}	10	100	k Ω	to prevent bus floating
Total bus capacitance for each signal line	C_L		40	pF	1 card $C_{\text{HOST}}+C_{\text{BUS}}$ shall not exceed 30 pF
Card Capacitance for each signal pin	C_{CARD}		10^1	pF	
Maximum signal line inductance			16	nH	
Pull-up resistance inside card (pin1)	R_{DAT3}	10	90	k Ω	May be used for card detection
Capacity Connected to Power Line	C_C		5	uF	To prevent inrush current

Table 4-5 Peak Voltage and Leakage Current

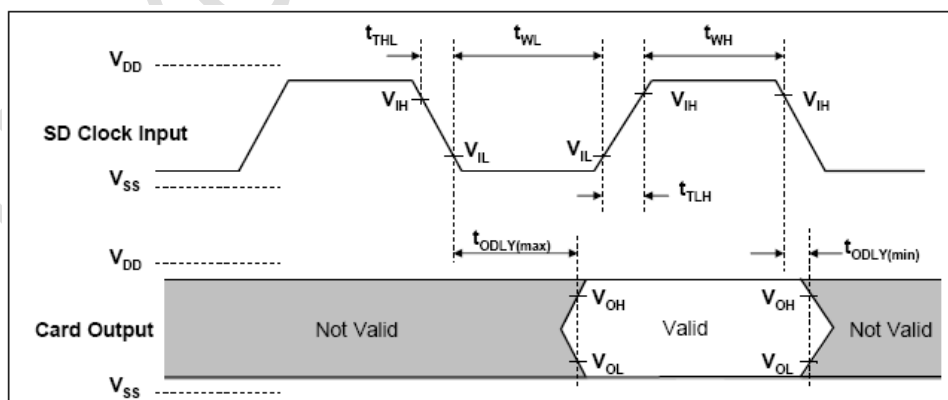
4.2 AC Characteristic



4.2.1 SD Interface timing (Default)



Card Input Timing (Default Speed Card)

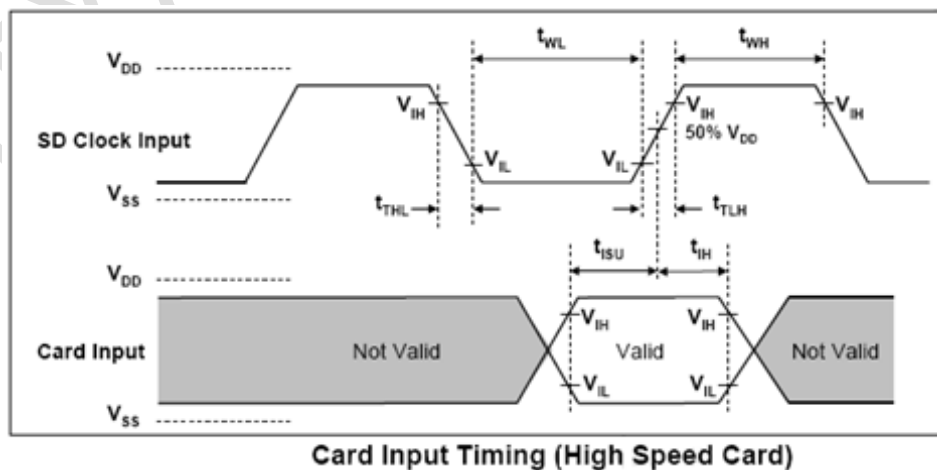


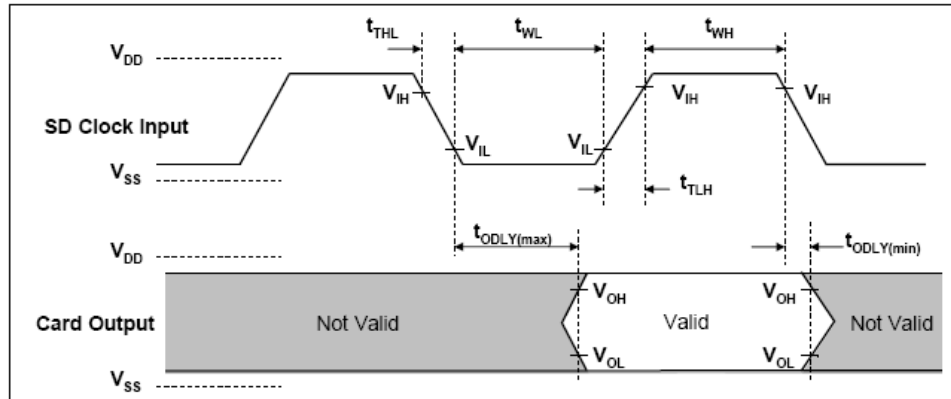
Card Output Timing (Default Speed Mode)

Parameter	Symbol	Min	Max	Unit	Remark
Clock CLK (All values are referred to min(V_{IH}) and max(V_{IL}))					
Clock frequency Data Transfer Mode	f _{PP}	0	25	MHz	C _{card} ≤ 10 pF (1 card)
Clock frequency Identification Mode	f _{OD}	0 ⁽¹⁾ /100	400	KHz	C _{card} ≤ 10 pF (1 card)
Clock low time	t _{WL}	10		ns	C _{card} ≤ 10 pF (1 card)
Clock high time	t _{WH}	10		ns	C _{card} ≤ 10 pF (1 card)
Clock rise time	t _{TLH}		10	ns	C _{card} ≤ 10 pF (1 card)
Clock fall time	t _{THL}		10	ns	C _{card} ≤ 10 pF (1 card)
Inputs CMD, DAT (referenced to CLK)					
Input set-up time	t _{ISU}	5		ns	C _{card} ≤ 10 pF (1 card)
Input hold time	t _{IH}	5		ns	C _{card} ≤ 10 pF (1 card)
Outputs CMD, DAT (referenced to CLK)					
Output Delay time during Data Transfer Mode	t _{ODLY}	0	14	ns	C _L ≤ 40 pF (1 card)
Output Delay time during Identification Mode	t _{ODLY}	0	50	ns	C _L ≤ 40 pF (1 card)

(1) 0Hz means to stop the clock. The given minimum frequency range is for cases where continues clock is required.

4.2.2 SD Interface Timing (High-Speed Mode)





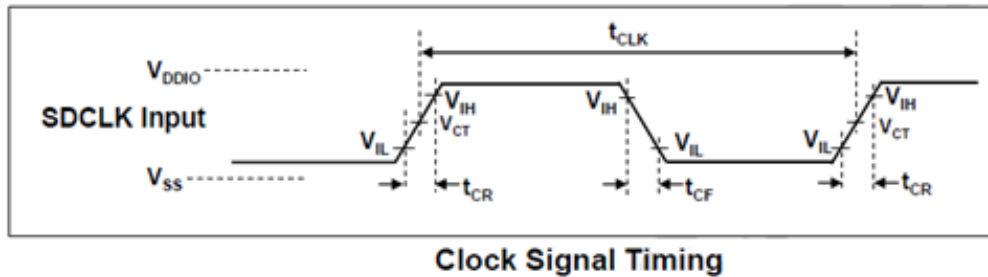
Card Output Timing (Default Speed Mode)

Parameter	Symbol	Min	Max	Unit	Remark
Clock CLK (All values are referred to min(V_{IH}) and max(V_{IL}))					
Clock frequency Data Transfer Mode	f _{PP}	0	50	MHz	C _{card} ≤ 10 pF (1 card)
Clock low time	t _{WL}	7		ns	C _{card} ≤ 10 pF (1 card)
Clock high time	t _{WH}	7		ns	C _{card} ≤ 10 pF (1 card)
Clock rise time	t _{TLH}		3	ns	C _{card} ≤ 10 pF (1 card)
Clock fall time	t _{THL}		3	ns	C _{card} ≤ 10 pF (1 card)
Inputs CMD, DAT (referenced to CLK)					
Input set-up time	t _{ISU}	6		ns	C _{card} ≤ 10 pF (1 card)
Input hold time	t _{IH}	2		ns	C _{card} ≤ 10 pF (1 card)
Outputs CMD, DAT (referenced to CLK)					
Output Delay time during Data Transfer Mode	t _{ODLY}		14	ns	C _L ≤ 40 pF (1 card)
Output Hold time	T _{OH}	2.5		ns	C _L ≤ 15 pF (1 card)
Total System capacitance of each line ¹	C _L		40	pF	C _L ≤ 15 pF (1 card)

(1) In order to satisfy severe timing, the host shall drive only one card.

4.2.3 SD Interface timing (SDR12, SDR25, SDR50 and SDR104 Modes)

Input:

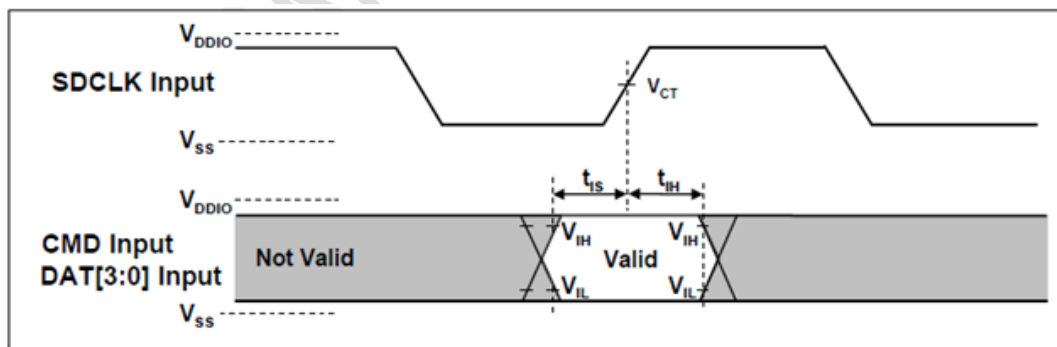


Clock Signal Timing

Symbol	Min	Max	Unit	Remark
t_{CLK}	4.80	-	ns	208MHz (Max.), Between rising edge, $V_{CT}=0.975V$
t_{CR}, t_{CF}	-	$0.2 * t_{CLK}$	ns	$t_{CR}, t_{CF} < 0.96ns$ (max.) at 208MHz, $C_{CARD}=10pF$ $t_{CR}, t_{CF} < 2.00ns$ (max.) at 100MHz, $C_{CARD}=10pF$ The absolute maximum value of t_{CR}, t_{CF} is 10ns regardless of clock frequency
Clock Duty	30	70	%	

Clock Signal Timing

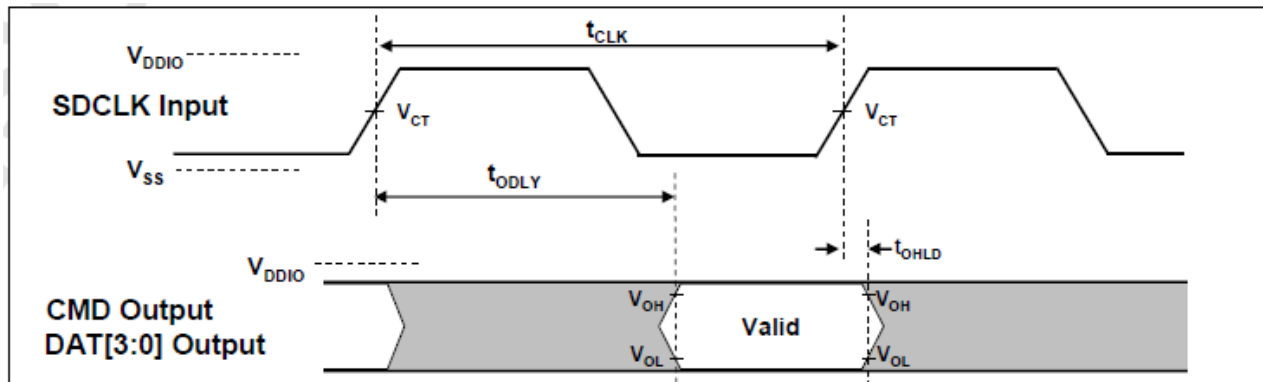
SDR50 and SDR104 Input Timing:



Card Input Timing

Symbol	Min	Max	Unit	SDR104 Mode
t_{IS}	1.40	-	ns	$C_{CARD} = 10pF, V_{CT} = 0.975V$
t_{IH}	0.8	-	ns	$C_{CARD} = 5pF, V_{CT} = 0.975V$
Symbol	Min	Max	Unit	SDR50 Mode
t_{IS}	3.00	-	ns	$C_{CARD} = 10pF, V_{CT} = 0.975V$
t_{IH}	0.8	-	ns	$C_{CARD} = 5pF, V_{CT} = 0.975V$

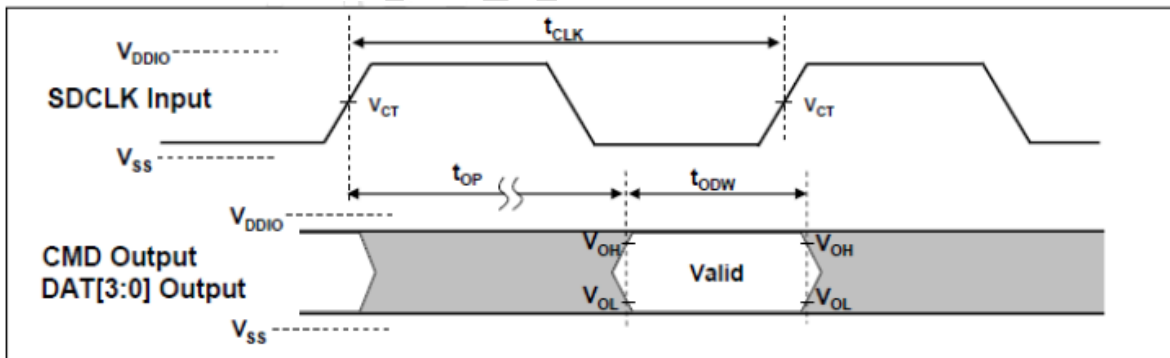
Output (SDR12, SDR25, SDR50):



Output Timing of Fixed Data Window

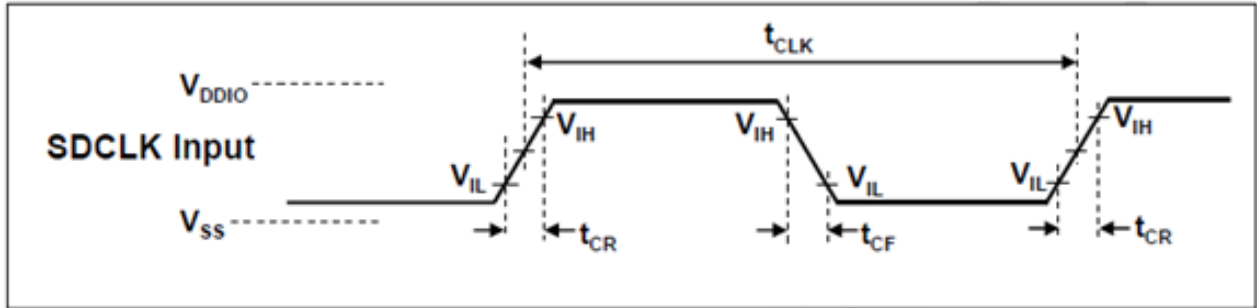
Symbol	Min	Max	Unit	Remark
t_{ODLY}	-	7.5	ns	$t_{CLK} \geq 10.0ns$, $C_L = 30pF$, using driver Type B, for SDR50
t_{ODLY}	-	14	ns	$t_{CLK} \geq 20.0ns$, $C_L = 40pF$, using driver Type B, for SDR25 and SDR12,
T_{OH}	1.5	-	ns	Hold time at the t_{ODLY} (min.), $C_L = 15pF$

Output (SDR104 Mode):



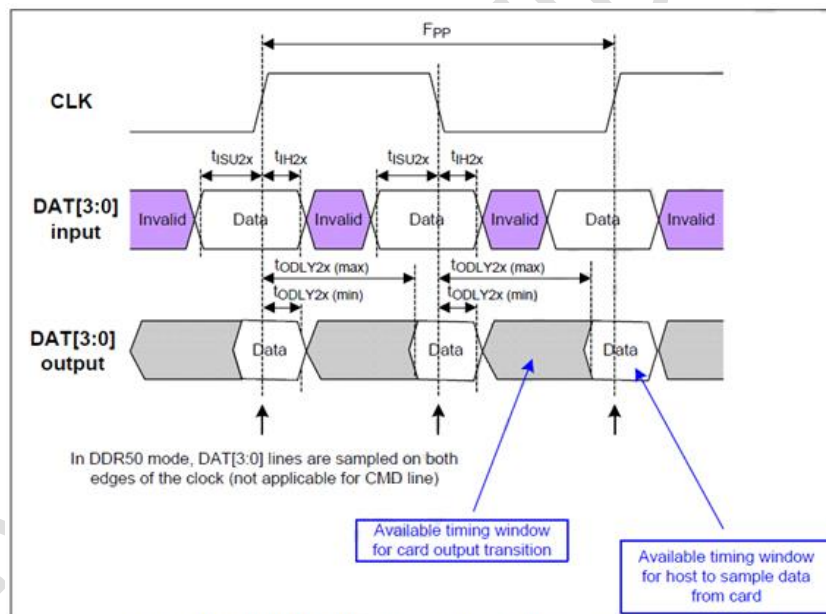
Symbol	Min	Max	Unit	Remark
t_{OP}	0	2	UI	Card Output Phase
Δt_{OP}	-350	+1550	ps	Delay variable due to temperature change after tuning
t_{ODW}	0.60	-	UI	$t_{ODW} = 2.88ns$ at 208MHz

4.2.4 SD Interface timing (DDR50 Modes)



Clock Signal Timing

Symbol	Min	Max	Unit	Remark
t_{CLK}	20	-	ns	50MHz (Max.), Between rising edge
t_{CR}, t_{CF}	-	$0.2 * t_{CLK}$	ns	$t_{CR}, t_{CF} < 4.00ns$ (max.) at 50MHz, $C_{CARD}=10pF$
Clock Duty	45	55	%	



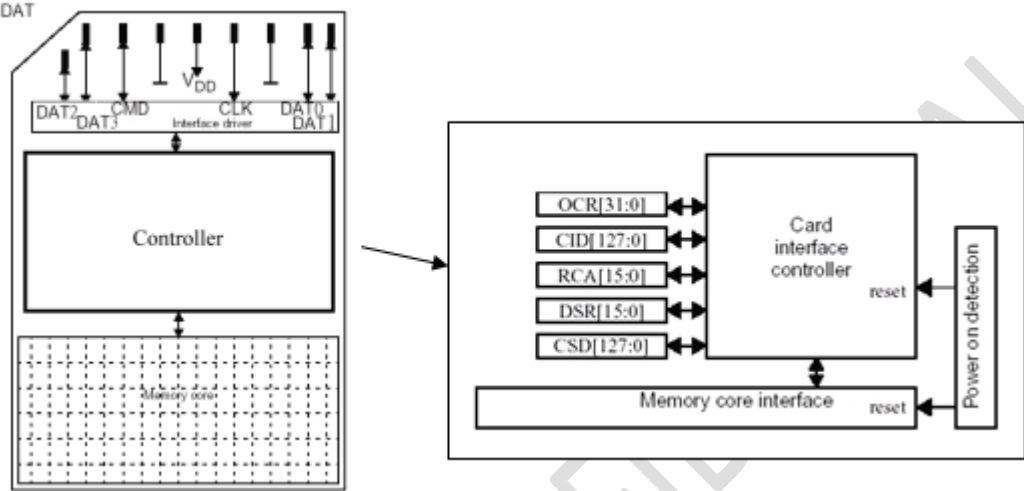
Timing Diagram DAT Inputs/Outputs Referenced to CLK in DDR50 Mode

Parameter	Symbol	Min	Max	Unit	Remark
Input CMD (referenced to CLK rising edge)					
Input set-up time	t_{ISU}	3	-	ns	$C_{card} \leq 10$ pF (1 card)
Input hold time	t_{IH}	0.8	-	ns	$C_{card} \leq 10$ pF (1 card)
Output CMD (referenced to CLK rising edge)					
Output Delay time during Data Transfer Mode	t_{ODLY}		13.7	ns	$C_L \leq 30$ pF (1 card)
Output Hold time	T_{OH}	1.5	-	ns	$C_L \geq 15$ pF (1 card)
Inputs DAT (referenced to CLK rising and falling edges)					
Input set-up time	t_{ISU2x}	3	-	ns	$C_{card} \leq 10$ pF (1 card)
Input hold time	t_{IH2x}	0.8	-	ns	$C_{card} \leq 10$ pF (1 card)
Outputs DAT (referenced to CLK rising and falling edges)					
Output Delay time during Data Transfer Mode	t_{ODLY2x}	-	7.0	ns	$C_L \leq 25$ pF (1 card)
Output Hold time	T_{OH2x}	1.5	-	ns	$C_L \geq 15$ pF (1 card)

Table 4-6 Bus Timings – Parameters Values (DDR50 Mode)

5. PAD ASSIGNMENT

5.1 Pad Assignment and Descriptions



pin	SD Mode			SPI Mode		
	Name	Type ¹	Description	Name	Type	Description
1	CD/DAT3 ₂	I/O/PP ₃	Card Detect/ Data Line[bit3]	CS	I ³	Chip Select (net true)
2	CMD	PP	Command/Response	DI	I	Data In
3	V _{SS1}	S	Supply voltage ground	VSS	S	Supply voltage ground
4	V _{DD}	S	Supply voltage	VDD	S	Supply voltage
5	CLK	I	Clock	SCLK	I	Clock
6	V _{SS2}	S	Supply voltage ground	VSS2	S	Supply voltage ground
7	DAT0	I/O/PP	Data Line[bit0]	DO	O/PP	Data Out
8	DAT1	I/O/PP	Data Line[bit1]	RSV		
9	DAT2	I/O/PP	Data Line[bit2]	RSV		

Table 5-1 SD Memory Card Pad Assignment

(1) S: power supply, I: input; O: output using push-pull drivers; PP: I/O using push-pull drivers.

(2) The extended DAT lines (DAT1-DAT3) are input on power up. They start to operate as DAT lines after SET_BUS_WIDTH command. The Host shall keep its own DAT1-DAT3 lines in input mode as well while they are not used. It is defined so in order to keep compatibility to MultiMedia Cards.

(3) At power up, this line has a 50KOhm pull up enabled in the card. This resistor serves two functions: Card detection and Mode Selection. For Mode Selection, the host can drive the line high or let it be pulled high to select SD mode. If the host wants to select SPI mode, it should drive the line low. For Card detection, the host detects that the line is pulled high. This pull-up should be disconnected by the user during regular data transfer with SET_CLR_CARD_DETECT (ACMD42) command.

SET_CLR_CARD_DETECT (ACMD42) command.

FLEXION CONFIDENTIAL

6. REGISTERS

Name	Width	Description
CID	128bit	Card identification number; card individual number for identification.
RCA	16bit	Relative card address; local system address of a card, dynamically suggested by the card and approved by the host during initialization.
DSR	16bit	Driver Stage Register; to configure the card's output drivers.
CSD	128bit	Card Specific Data; Information about the card operation conditions.
SCR	64bit	SD Configuration Register; Information about the SD Memory Card's Special Features capabilities
OCR	32bit	Operation conditions register.
SSR	512bit	SD Status; Information about the card proprietary features.
OCR	32bit	Card Status; Information about the card status.

Table 6-1 SD Registers

8. ORDERING INFORMATION

Capacity	MPN (Diamond Grade)	MPN (Gold Grade)
4GB	FDMS004GME-XR00	FDMS004GMG-XR00
8GB	FDMS008GME-XR00	FDMS008GMG-XR00
16GB	FDMS016GME-XR00	FDMS016GMG-XR00
32GB	FDMS032GME-XR00	FDMS032GMG-XR00
64GB	FDMS064GME-XR00	FDMS064GMG-XR00
128GB	FDMS128GME-XR00	FDMS128GMG-XR00
256GB	FDMS256GME-XR00	FDMS256GMG-XR00

FLEXION CONFIDENTIAL

REVISION HISTORY

Revision	Date	History
1.0	2020/09	First Release
1.1	2020/11	Update Workflow
1.2	2021/01	Update Chapter 1 and Ordering Information

FLEXXON CONFIDENTIAL