

100 Series Case (Recessed or flush top available)

A very versatile shell enclosure with recessed area for membrane keypad. Battery options include: 2AA, 3AA, 4AA, 6AA, 1 or 2-9V, 2C, 4C and No battery.

Battery Options:

- No Battery
- 2 AA cells 1 or 2-9V cells
- 3 AA cells 2 C sized sells
- 4 AA cells 4 C sized cells
- 6 AA cells

Color Options:

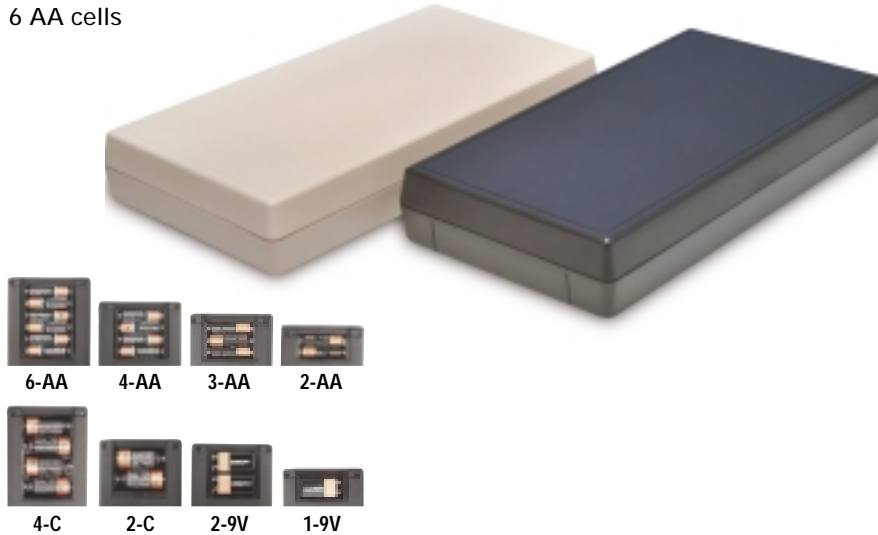
- PC Bone
- Black
- Custom color matching

Standard Material Options:

- ABS UL 94 VO (fire retardant)
- ABS UL 94 HB standard

Dimension Options:

- (L x W x H)
- 7.50" x 4.0" x 1.12"
- 7.50" x 4.0" x 1.29"
- 7.50" x 4.0" x 1.75"
- 7.50" x 4.0" x 1.90"



| Case Dimensions | 7.5x4.0x1.2 inches | 7.5x4.0x1.29 inches | 7.5x4.0x1.75 inches | 7.5x4.0x1.90 inches |
|--|--------------------|---------------------|---------------------|---------------------|
| Description | Part No. | Part No. | Part No. | Part No. |
| Shell case with NO Battery Compartment | 100-41-NO | 100-42-NO | 100-41-NO-E | 100-42-NO-E |
| Shell case with 2AA Battery Compartment | 100-41-2A | 100-42-2A | 100-41-2A-E | 100-42-2A-E |
| Shell case with 3AA Battery Compartment | 100-41-3A | 100-42-3A | 100-41-3A-E | 100-42-3A-E |
| Shell case with 4AA Battery Compartment | 100-41-4A | 100-42-4A | 100-41-4A-E | 100-42-4A-E |
| Shell case with 6AA Battery Compartment | 100-41-6A | 100-42-6A | 100-41-6A-E | 100-42-6A-E |
| Shell case with 9V Battery Compartment | 100-41-9V | 100-42-9V | 100-41-9V-E | 100-42-9V-E |
| Shell case with 2-9V Battery Compartment | 100-41-29V | 100-42-29V | 100-41-29V-E | 100-42-29V-E |
| Shell case with 2C Battery Compartment | | | 100-41-2C-E | 100-42-2C-E |
| Shell case with 4C Battery Compartment | | | 100-41-4C-E | 100-42-4C-E |

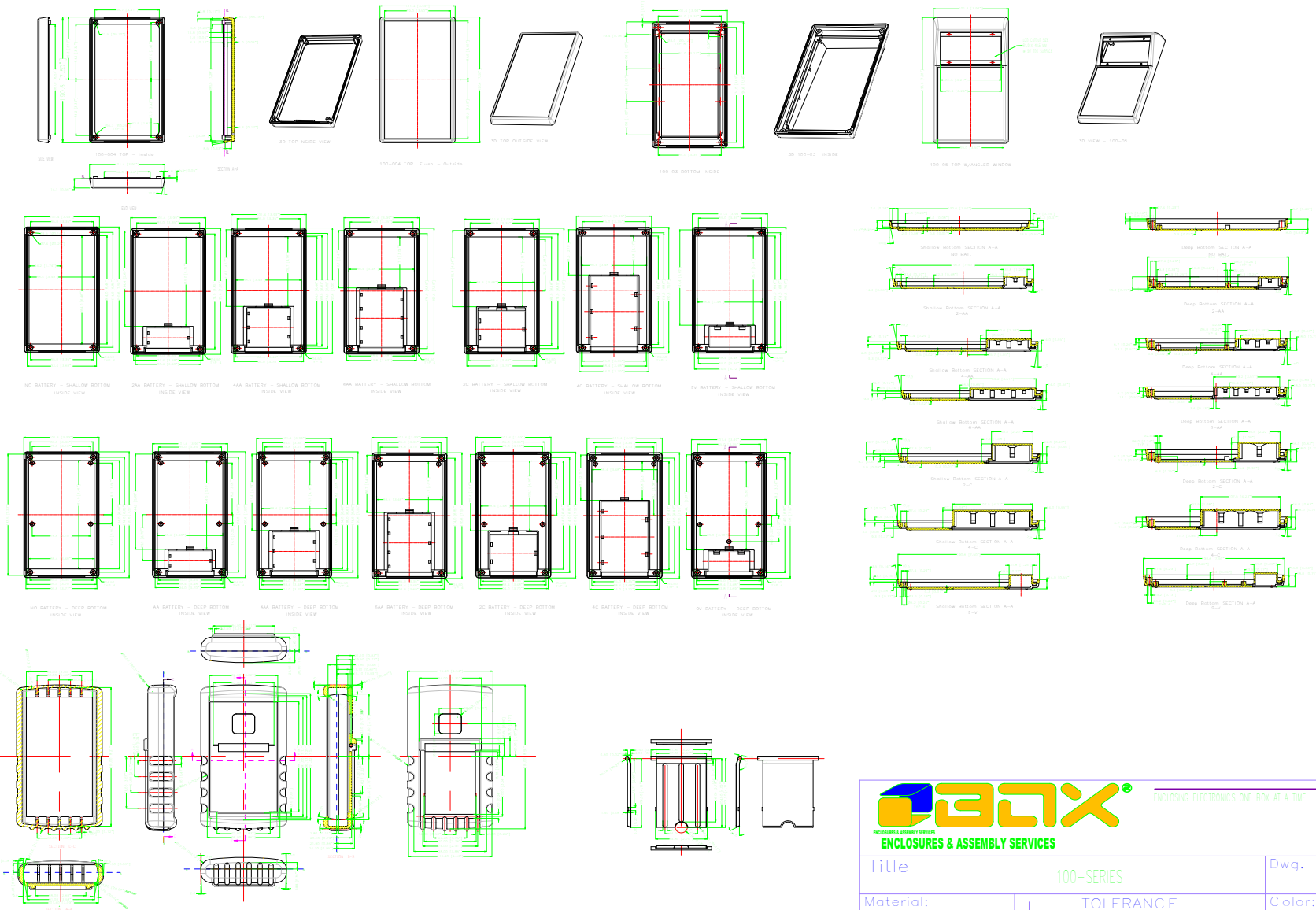
Note: for black add BL to part number, for bone add BO to part number

Note: For recessed tops add R


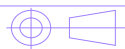
Note: For Flush tops add F

ACCESSORIES

| | | | | | | | |
|--|--------------------|-------------------|----------------------|----------------------|-------------------|---------------|---------------|
| Protective Boot w/Integrated tilt bar | Light Blue | Dark Blue | Bright Orange | Bright Yellow | Red | Black | |
| | Part No. | Part No. | Part No. | Part No. | Part No. | Part No. | |
| | 100-RBT-LBL | 100-RBT-DBL | 100-RBT-ORG | 100-RBT-YEL | 100-RBT-RED | 100-RBT-BLK | |
| Battery Clip Sets | 2AA set | 3AA set | 4AA set | 6AA set | 9V snap on | 2C set | 4C set |
| | Part No. | Part No. | Part No. | Part No. | Part No. | Part No. | Part No. |
| | BAT-2A | BAT-3A | BAT-4A | BAT-6A | BAT-9VS | BAT-2C | BAT-4C |
| Belt Clips | Bone | Black | | | | | |
| | Part No. | Part No. | | | | | |
| | CLP-BONE | CLP-BLK | | | | | |
| Expander Panel | Black Panel | Bone Panel | | | | | |
| | Part No. | Part No. | | | | | |
| (increases case height by 0.5 inches) | 100-EXPBLK | 100-EXPBONE | | | | | |
| Required for C size battery options | | | | | | | |

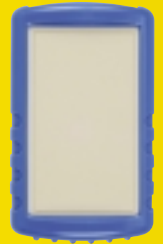


THIS DRAWING IS THE PROPERTY OF AND MAY EMBODY PROPRIETARY INFORMATION OWNED BY X-Box Enclosures. IT IS PROVIDED UNDER A CONFIDENTIAL RELATIONSHIP FOR A SPECIFIC PURPOSE. THE RECIPIENT AGREES TO USE IT ONLY FOR SUCH PURPOSE AND RETURN IT TO X-Box Enclosure UPON REQUEST.

| | | | | |
|---|--|---|--------------|-------------------------------------|
|  | | ENCLOSING ELECTRONICS ONE BOX AT A TIME | | Revision: |
| | | ENCLOSURES & ASSEMBLY SERVICES | | Model: |
| Title | | 100-SERIES | Dwg. No.: | Part No.: |
| Material: | TOLERANCE all dimension in mm unless otherwise specified. x ±0.20 .x ±0.10 .xx ±0.05 ANGLE ±0.5° | Color: | Drn. Date | Tan zonghaun Apr 10 04 Chk. Date |
| Finish: | | Qty: | App. Date | |
| Proj.  | | A4 | Sheet 1 of 1 | App. Date |

New for 2004

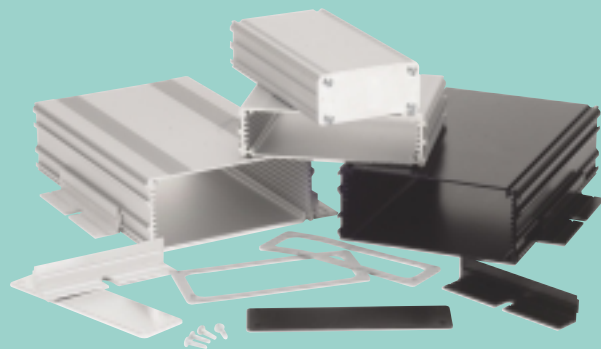
Featuring eight new product lines with protective rubber boots.



NEMA 4 / IP65 Enclosures



Extruded Aluminum



Protective Boots

NEW!



LCD Enclosures

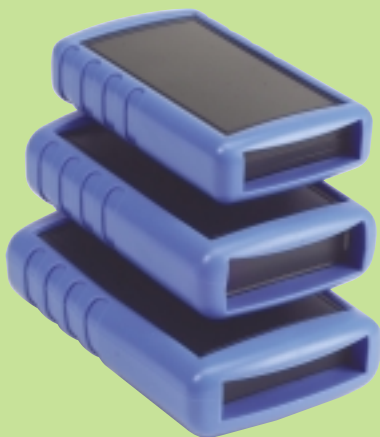


ENCLOSURES & ASSEMBLY SERVICES

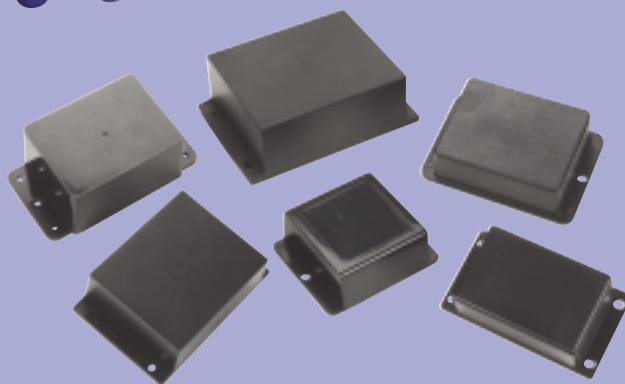
Enclosing electronics one box at a time.



Handheld Enclosures



Flange Cases



See back page for International Distribution Network