

Product data sheet

Specifications

SQUARE D

Green Premium™



Complete control station, Harmony 9001B, 2 push buttons START/ STOP, interlocked contact, 5A, 600V AC, 2NO, NEMA 1

9001BG215

Product availability : Stock - Normally stocked in distribution facility

Main

Range of Product	Harmony 9001B
Product or Component Type	Complete control station
Device short name	9001BG

Complementary

Control station composition	2 push-buttons START-STOP
Contacts type and composition	2 NO
Contact operation	Interlocked
Connections - terminals	Screw clamp terminal
[Ie] rated operational current	5 A 600 V
Device mounting	Surface
Type of Installation	Indoor

Environment

NEMA degree of protection	NEMA 1
Product Certifications	UL listed file E42259 CCN NKCR CSA LR25490 class 3211 03 CE
Environmental characteristic	Standard environment

Ordering and shipping details

Category	21421-9001 B (NOT BW70 - BW80)
Discount Schedule	CS1
GTIN	785901390268
Returnability	Yes
Country of origin	MX

Packing Units

Unit Type of Package 1	PCE
------------------------	-----

Number of Units in Package 1	1
Package 1 Height	2.20 in (5.6 cm)
Package 1 Width	2.52 in (6.4 cm)
Package 1 Length	4.02 in (10.2 cm)
Package 1 Weight	9.76 oz (276.7 g)

Offer Sustainability

Sustainable offer status	Green Premium product
California proposition 65	WARNING: This product can expose you to chemicals including: Nickel compounds, which is known to the State of California to cause cancer, and Di-isodecyl phthalate (DIDP), which is known to the State of California to cause birth defects or other reproductive harm. For more information go to www.P65Warnings.ca.gov
REACH Regulation	REACH Declaration
REACH free of SVHC	Yes
EU RoHS Directive	Pro-active compliance (Product out of EU RoHS legal scope) EU RoHS Declaration
Toxic heavy metal free	Yes
Mercury free	Yes
China RoHS Regulation	China RoHS declaration
RoHS exemption information	Yes
Environmental Disclosure	Product Environmental Profile
Circularity Profile	End of Life Information

Contractual warranty

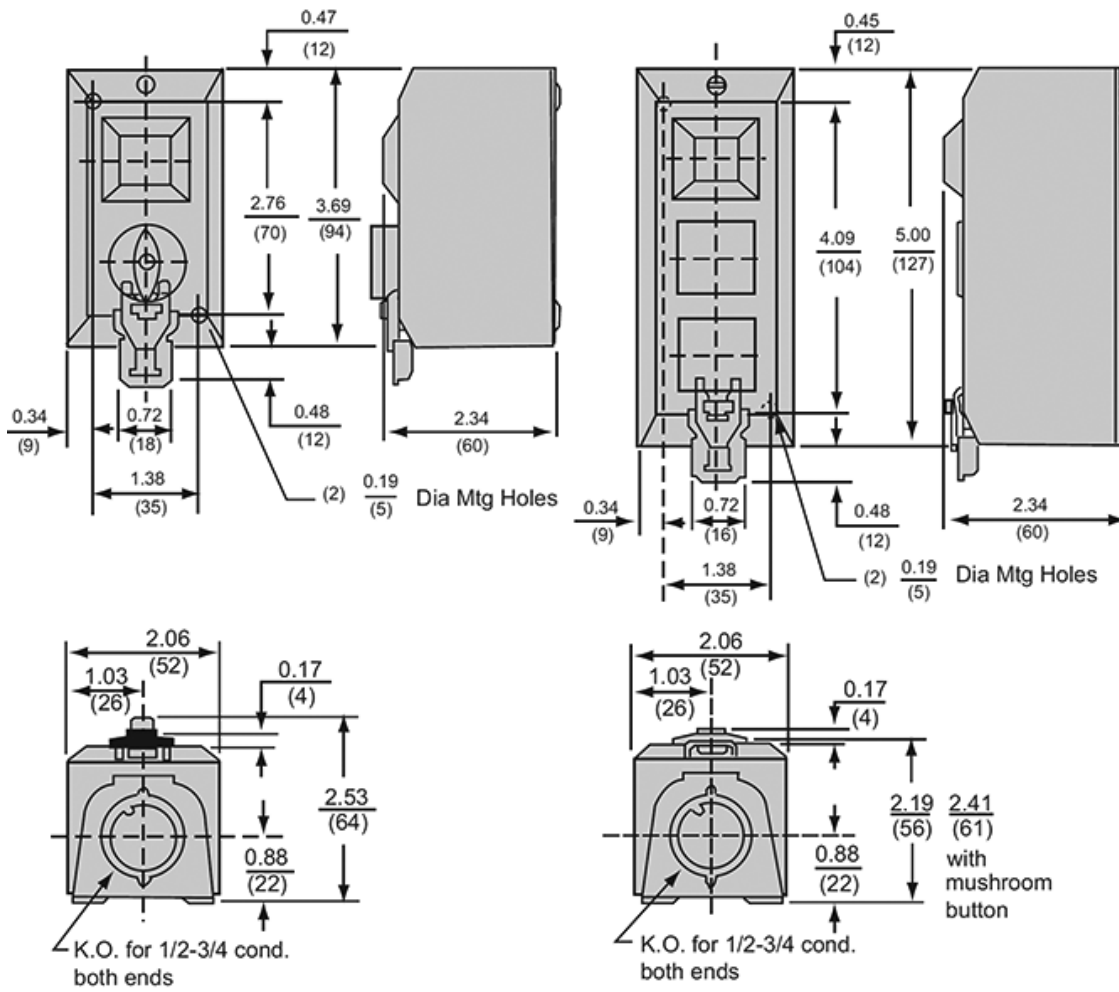
Warranty	18 months
----------	-----------

Product data sheet

Dimensions Drawings

9001BG215

Approximate Dimensions



Recommended replacement(s)