

Product data sheet

Specifications



Manual Starter, fractional horsepower, 16A, 2 poles, 1 HP at 277 VAC, toggle w/guard, red indicator, NEMA 1 enclosure

2510FG6P

Product availability : Stock - Normally stocked in distribution facility

Main

Product	Single Unit Manual Starter
Type	F
Overload Relay Type	Melting alloy

Complementary

Current Rating	16 A
Cable entry	0.5" and 0.75" knock-outs (top and bottom)
Horsepower Rating	1 hp 115 V AC 1 hp 277 V AC 0.75 hp 115 V DC 0.75 hp 230 V DC 2 hp 230 V AC
Voltage Rating	277 V AC 230 V DC
Number of Poles	2P
Control Unit	Toggle switch (with lock-off)
Number of Phases	1 phase
Pilot Light	Red indicator
Reset	Manual
Motor starter type	Non reversing
Electrical Connection	Screw clamp terminals
Wire Gauge	AWG 14...AWG 12 copper
Height	4.25 in (107.95 mm)
Width	2.44 in (61.98 mm)
Depth	2.88 in (73.15 mm)

Environment

Product Certifications	UL listed file E42243 CCN NLRV CSA LR25490 class 3211 05
NEMA Enclosure Rating	NEMA 1 Plastic standard size

Ordering and shipping details

Category	21101-2510,2511,2512 F
Discount Schedule	CP1
GTIN	785901554042
Returnability	Yes
Country of origin	MX

Packing Units

Unit Type of Package 1	PCE
Number of Units in Package 1	1
Package 1 Height	2.60 in (6.6 cm)
Package 1 Width	3.11 in (7.9 cm)
Package 1 Length	4.88 in (12.4 cm)
Package 1 Weight	13.76 oz (390.1 g)

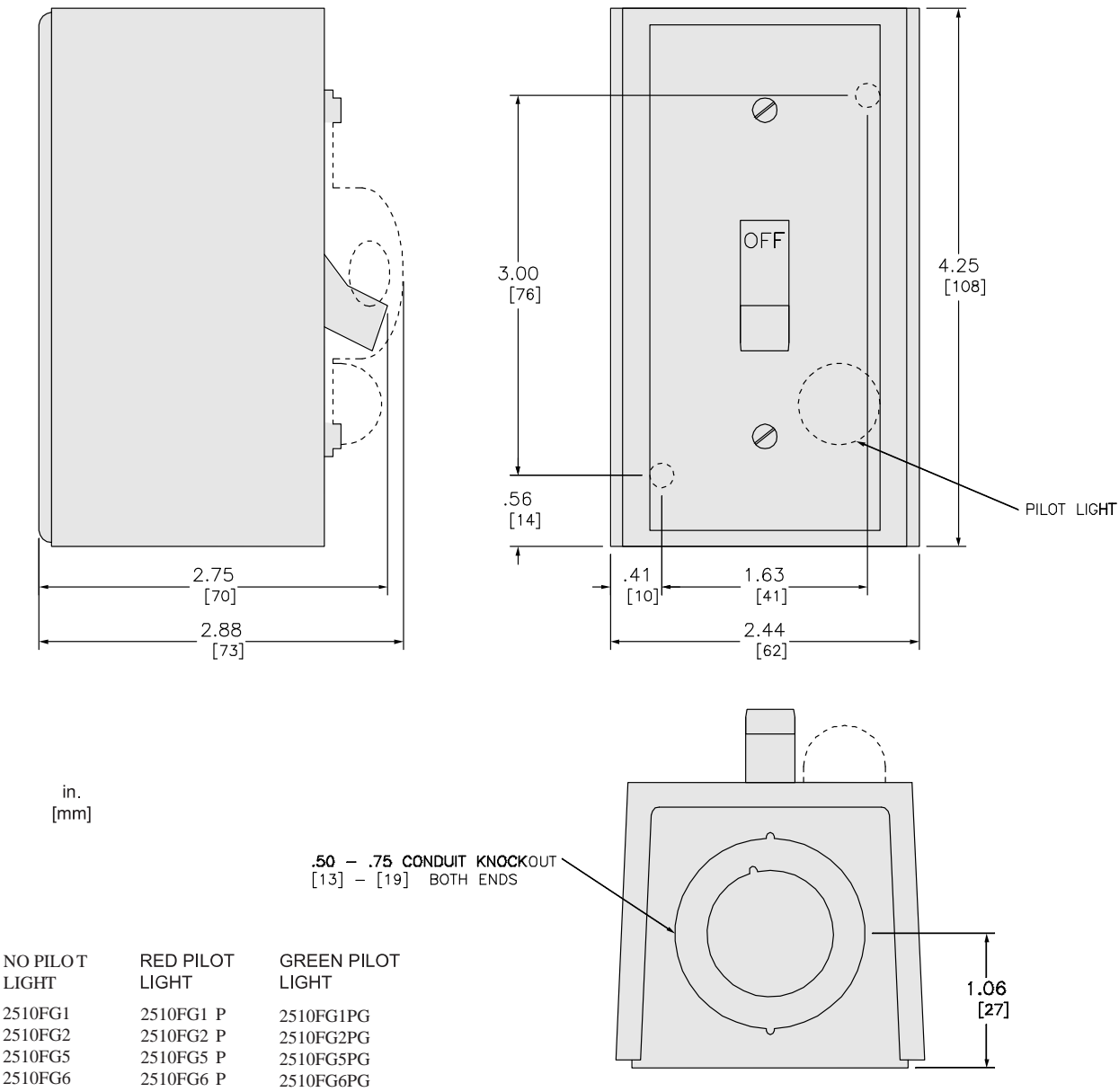
Offer Sustainability

California proposition 65	WARNING: This product can expose you to chemicals including: Lead and lead compounds, which is known to the State of California to cause cancer and birth defects or other reproductive harm. For more information go to www.P65Warnings.ca.gov
REACH Regulation	REACH Declaration
REACH free of SVHC	Yes
EU RoHS Directive	Not compliant
China RoHS Regulation	China RoHS declaration Product out of China RoHS scope. Substance declaration for your information.
PVC free	Yes

Contractual warranty

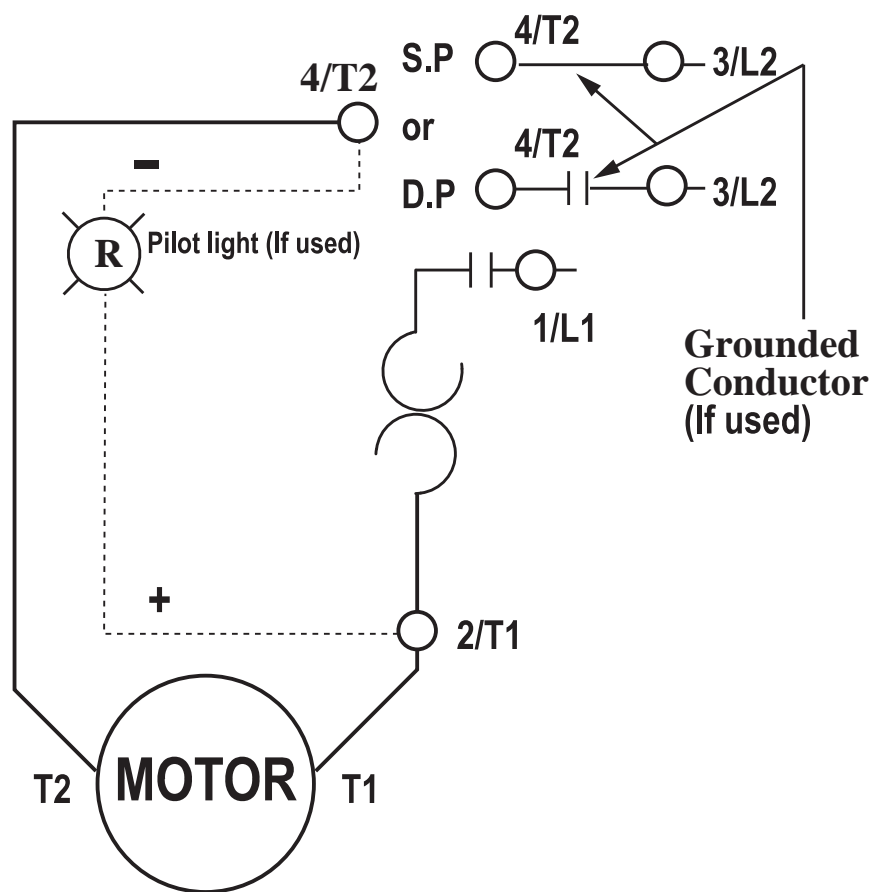
Warranty	18 months
----------	-----------

Dimensions



ALL DIMENSIONS ARE APPROXIMATE.
REFER TO TECHNICAL DRAWING AND TECHNICAL DOCUMENTS FOR COMPLETE INFORMATION.

Wiring Diagram



REFER TO INSTRUCTION SHEET AND
TECHNICAL DOCUMENTATION FOR COMPLETE INFORMATION

Recommended replacement(s)