



H K Wentworth Group
Distributed and Supported in the
UK, IE, AU & NZ



hakko.com - hakko.co.uk - hakko.com.au

Packing List:



FR-410 Station with Lead + Instruction manual



Desoldering Tool (FR4103-81)



Iron Stand (FH400), Cleaning Pot (FT400) and Wire (599-029)



Tool Box (C5030)



Ceramic paper filter (4 pcs.) (A5044)



Filter (2 pcs.) (A5020)



Nozzle wrench (B5106)



Cleaning pin for ø1.0 mm (B1087)



Cleaning pin for heater (B1215)



Cleaning drill for ø1.0 mm (B1303)



Specifications:

Model No.	FR410
Power consumption	190W
Temperature range	FR-4103 : 330 to 450°C
Temperature stability	±5°C at idle temperature

FR-400 DeSoldering Station

Output voltage	AC 24V
Vacuum generator	Vacuum pump, double cylinder type
Vacuum pressure	Max. 80kPa (600mmHg)
Suction flow	15L/min.
Dimensions	165(W)×137(H)×244(D)mm
Weight	4.8kg

FR4103 DeSoldering Gun

Power consumption	140W (24V)
Nozzle to ground resistance	<2Ω
Nozzle to ground potential	<2mV
Heating element	Composite heater
Cord length	1.2m
Total length	168mm (with Ø1.0mm S nozzle)
Weight	190g (with Ø1.0mm S nozzle)

* The suction flow is measured at the filter case suction port of station.

* Total length and weight (w/o cord, hose)

Nozzles:

The FR4103 supplied with the FR-410 desoldering station requires the N60 Series Nozzles which are available in a variety of shapes and sizes to purchase separately. Note: A N60- 02 1mm Nozzle is included with this station.

N61 Series

Standard Type for Land-Patterns

Close Fitting Nozzles for standard size land pattern secure desoldering.



S Type for small land-patterns

Close Fitting Nozzles for small size land pattern secure desoldering.



SS Type for micro land-patterns

Close fitting nozzles for micro size land pattern secure desoldering.



Oval Type for flat terminals

Slim and long nozzles to reach components in narrow spaces. Recommended for shield cases.



Long Type for narrow space

Slim and long nozzles to reach components in narrow spaces. Recommended for header sockets.

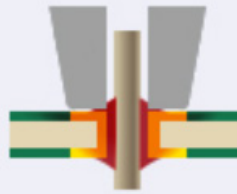


Do you use the right nozzle for your workpiece?



If Nozzle is too big

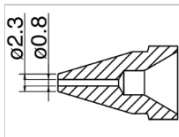
it takes longer dwell time due to ineffective heat transfer which may damage PCB



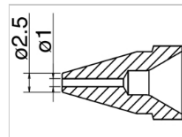
Correct Size

Heat transfer is more efficient, shortening the process.

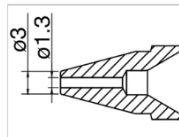
Standard type



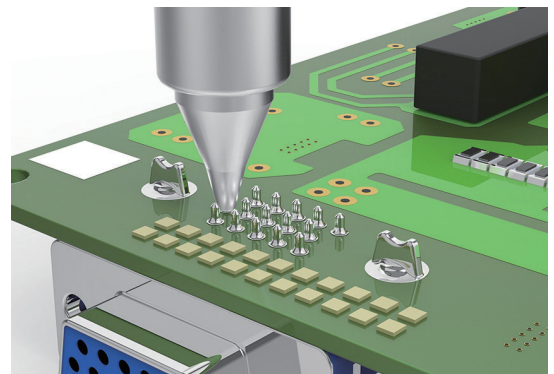
N61-07 Nozzle Standard type
Size $\Phi 0.8$



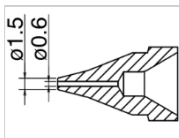
N61-08 Nozzle Standard type
Size $\Phi 1.0$



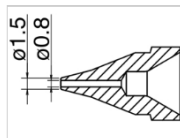
N61-09 Nozzle Standard type
Size $\Phi 1.3$



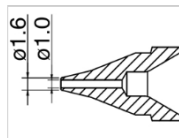
SS Type



N61-01 Nozzle SS type
Size $\Phi 0.6$

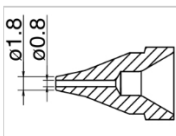


N61-02 Nozzle SS type
Size $\Phi 0.8$

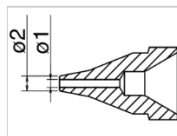


N61-03 Nozzle SS type
Size $\Phi 1.0$

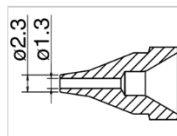
S type



N61-04 Nozzle S type
Size $\Phi 0.8$

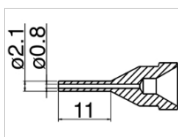


N61-05 Nozzle S type
Size $\Phi 1.0$

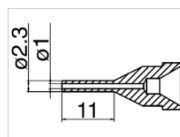


N61-06 Nozzle S type
Size $\Phi 1.3$

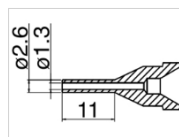
Long Type



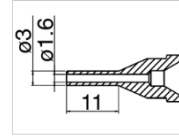
N61-11 Nozzle Long type
Size $\Phi 0.8$



N61-12 Nozzle Long type
Size $\Phi 1.0$



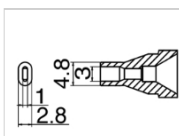
N61-13 Nozzle Long type
Size $\Phi 1.3$



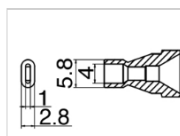
N61-14 Nozzle Long type
Size $\Phi 1.6$



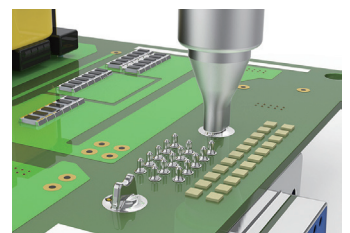
Oval type



N61-15 Nozzle Oval type
Size 3x1 mm



N61-16 Nozzle Oval type
Size 4x1 mm



H K Wentworth Group
Distributed and Supported in the
UK, IE, AU & NZ

Recommended Extras:

Available to purchase separately

C5046

Nozzle Quick Changer



Quickly and safely change nozzles during use with the C5045. Three Bays to pre-load nozzles for fast change over in three easy steps; insert, twist and go.

Upper Section can be used to store spare nozzles.



C1390C
Omnivise PCB Holder



FR830
PCB Underboard Heater



C5027
PCB Board Holder



FT640 / FT641
Tweezers



C5028
Rework Fixture



Nozzle Cleaning Pin
B1086 ϕ 0.8mm
B1087 ϕ 1.0mm
B1088 ϕ 1.3mm
B1089 ϕ 1.6mm



Nozzle Cleaning Pin
B2874 ϕ 0.6mm
B2875 ϕ 2mm / 2.3mm



WICK
Desolder Braid
Available in different sizes



FA-400
Desk Top Fume
Extractor



FA-400
Fume Extractor /
Air Purifier



H K Wentworth Group
Distributed and Supported in the
UK, IE, AU & NZ