

Snap-On BMA Jack to RA Slide-On BMA Jack 2 Hole Flange Cable RG402 Type .141 Coax

The BMA jack snap-on to RA BMA jack slide-on 2 hole flange cable using RG402 type .141 coax, part number FMCA2827, from Fairview Microwave is in-stock and ships same day. This Fairview BMA to BMA cable assembly has a jack to jack gender configuration with 50 ohm semi-rigid FM-SR141CU-STR coax. Fairview Microwave's semi-rigid RF cable assemblies are ideal for high performance applications and can be formed, using proper tooling, to the routing pattern required. The FMCA2827 BMA jack to BMA jack cable assembly operates to 12.4 GHz. The right angle BMA interface on the FM-SR141CU-STR cable allows for easier connections in tight spaces. Our RF cable assembly with BMA 2 hole flange interface allows designers to create external connections on their product enclosures, and can be used in a variety of other rack mount and panel mount applications.

Custom versions of most RF cable assemblies can be built and shipped same day. Custom cable assembly lengths can be obtained by specifying the desired length on the web site at time of order or by contacting a sales representative. Other RF cable assembly value added services including connector orientation or clocking, heat shrink booting and labeling are also available. RF testing can also be performed to document the electrical performance of your cable assembly.

Electrical Specifications

Description	Min	Typ	Max	Units
Frequency Range	DC		12.4	GHz
VSWR			1.5:1	
Velocity of Propagation		69.5		%
Dielectric Withstanding Voltage (AC)			1,000	Vrms

Performance by Frequency

Description	F1	F2	F3	F4	F5	Units
Frequency	1	2.5	5	12.4		GHz
Insertion Loss (Typ.)	0.12	0.175	0.266	0.51		dB/ft
	0.39	0.57	0.87	1.67		dB/m

Electrical Specification Notes:

Insertion Loss does not include the loss of the connectors. Insertion Loss is estimated as 0.1 dB for the straight connector and 0.2 dB for the right angle connector.

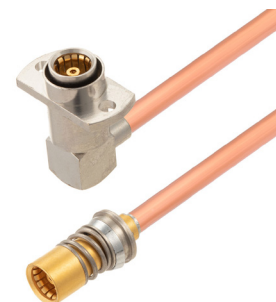
Mechanical Specifications

Cable Assembly

Weight 0.058 lbs [26.31 g]

Cable

Cable Type FM-SR141CU-STR
Impedance 50 Ohms
Inner Conductor Type Solid
Inner Conductor Material and Plating Copper Clad Steel, Silver
Dielectric Type PTFE
Number of Shields 1



Configuration:

- Snap-On BMA Jack
- Slide-On BMA Jack Right Angle 2 Hole Flange
- FM-SR141CU-STR

Features:

- Max Frequency 12.4 GHz
- 69.5% Phase Velocity
- 1000 Mating Cycles

Applications:

- General Purpose
- Laboratory Use

Fairview Microwave
301 Leora Ln., Suite 100
Lewisville, TX 75056
Tel: 1-800-715-4396 / (972) 649-6678
Fax: (972) 649-6689
www.fairviewmicrowave.com
sales@fairviewmicrowave.com

Outer Conductor Material and Plating Copper

Repeated Minimum Bend Radius 0.25 in [6.35 mm]

Connectors

Description	Connector 1	Connector 2
Type	BMA Jack	BMA Jack
Mount Method		2 Hole Flange
Impedance	50 Ohms	50 Ohms
Connection Method	Snap-On	Slide-On
Mating Cycles	1,000	1,000
Contact Material & Plating	Beryllium Copper, Gold	Beryllium Copper, Gold
Contact Plating Spec.	51.18µ in. minimum	
Dielectric Type	PTFE	PTFE
Outer Cond Material & Plating	Beryllium Copper, Gold	Beryllium Copper, Gold
Body Material & Plating	Stainless Steel, Gold	Brass, Tri-Metal
Body Plating Spec.	19.68µ in. minimum	

Mechanical Specification Notes:

Maximum length using the straight semi rigid coax is 5ft. For lengths greater than 5ft, please contact us

Environmental Specifications

Temperature

Operating Range -40 to +100 deg C

Compliance Certifications (see [product page](#) for current document)

Plotted and Other Data

Notes:

How to Order

Part Number Configuration:

FMCA2827 - xx uu

cm = Centimeters
 <blank> = Inches

Length

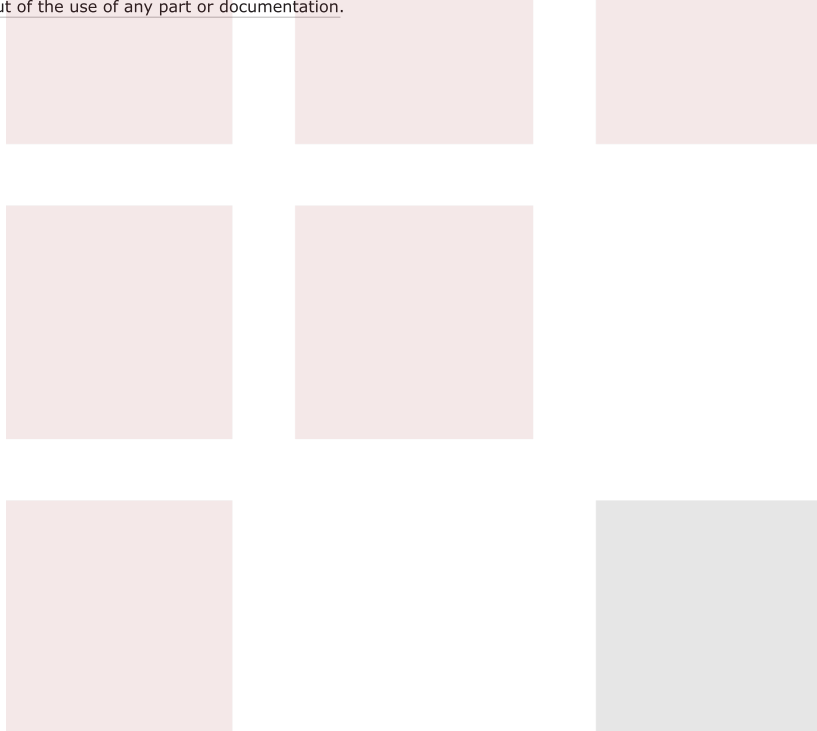
Example: FMCA2827-12 = 12 inches long cable
 FMCA2827-100cm = 100 cm long cable

Snap-On BMA Jack to RA Slide-On BMA Jack 2 Hole Flange Cable RG402 Type .141 Coax from Fairview Microwave has same day shipment for domestic and International orders. Our RF, microwave and millimeter wave products maintain a 99% availability and are part of the broadest selection in the industry.

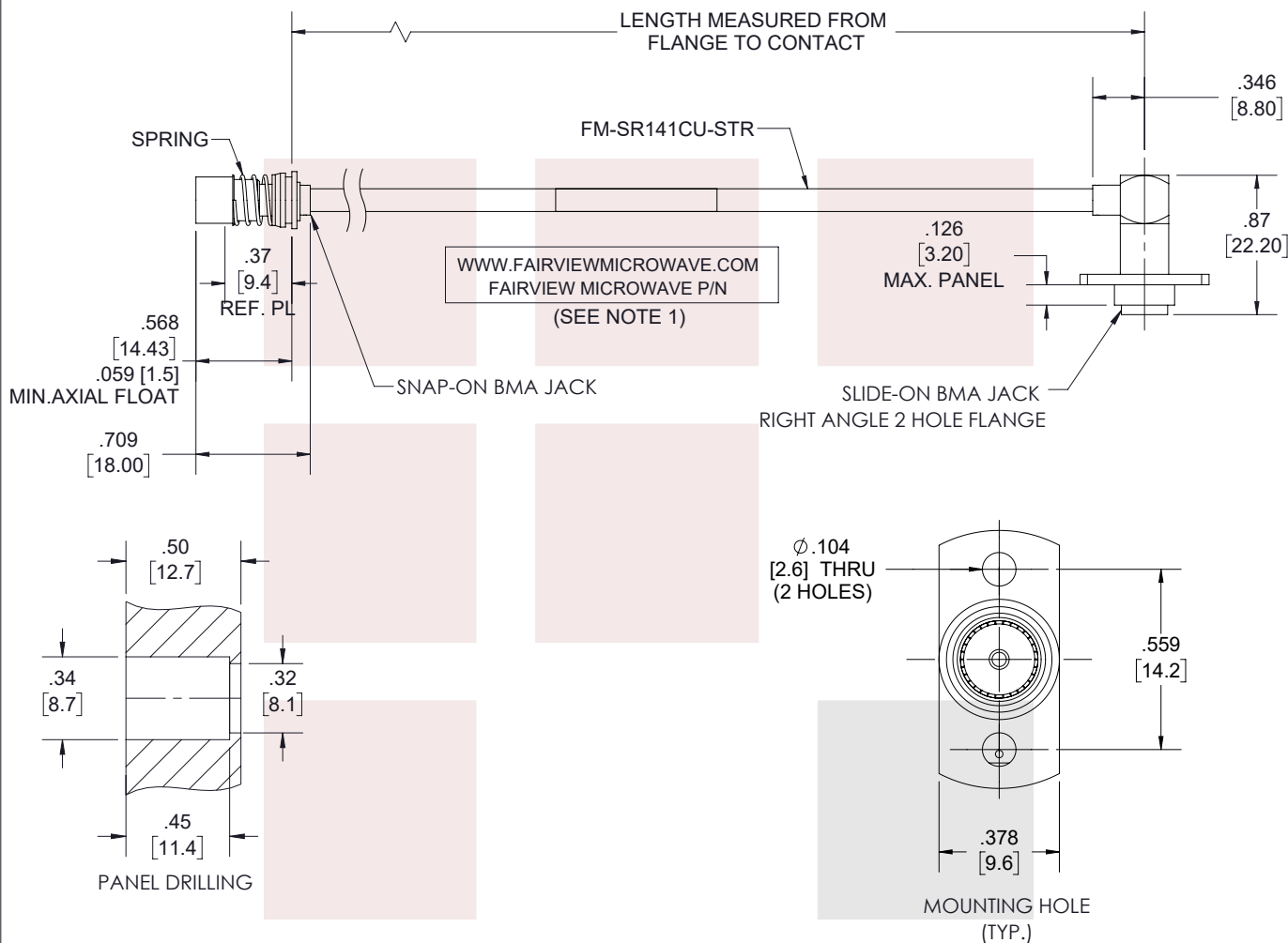
Click the following link to obtain additional part information: [Snap-On BMA Jack to RA Slide-On BMA Jack 2 Hole Flange Cable RG402 Type .141 Coax FMCA2827](#)

URL: <https://www.fairviewmicrowave.com/snap-on-bma-jack-to-ra-slide-on-bma-jack-2-hole-flange-cable-rg402-type-.141-coax-fmca2827-p.aspx>

The information contained in this document is accurate to the best of our knowledge and representative of the part described herein. It may be necessary to make modifications to the part and/or the documentation of the part, in order to implement improvements. Fairview Microwave reserves the right to make such changes as required. Unless otherwise stated, all specifications are nominal. Fairview Microwave does not make any representation or warranty regarding the suitability of the part described herein for any particular purpose, and Fairview Microwave does not assume any liability arising out of the use of any part or documentation.



REVISIONS			
REV.	DESCRIPTION	DATE	APPROVED
A	INITIAL RELEASE	07/17/2022	AGANWANI



1. CABLES 36" AND UNDER HAVE 1 LABEL CENTERED.
CABLES OVER 36" HAVE 2 LABELS, ONE AT EACH END
6.0" FROM THE FRONT OF THE CONNECTOR.


Fairview Microwave
an INFINITE[®] brand

Snap-On BMA Jack to RA Slide-On BMA Jack 2 Hole
Flange Cable RG402 Type .141 Coax

SIZE A	CAGE CODE 3FKR5	DRAWN BY PSRINIVAS
-----------	--------------------	-----------------------

SCALE	N/A
-------	-----

A2827	REV
-------	-----