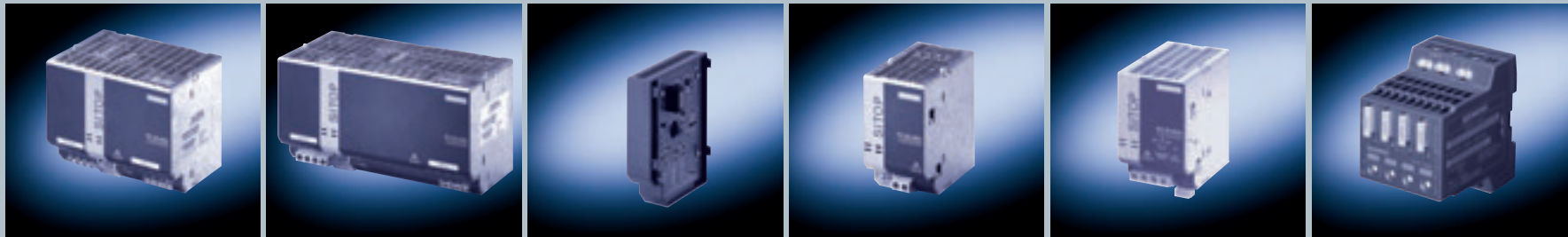


# SITOP ordering data

## The modular power supply



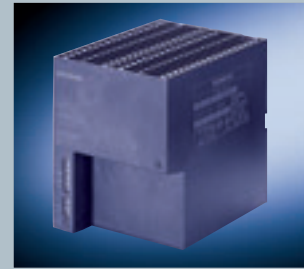
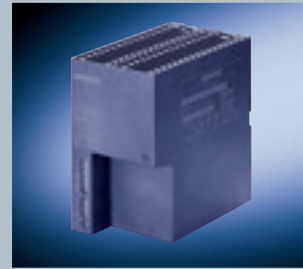
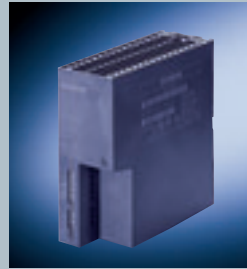
| Technical specifications   | 3-phase <sup>1)</sup>   | 3-phase <sup>1)</sup>  | Signaling   | Power failure bridging  | Redundancy  | Monitoring   |
|--|---|--|---|---|---|--|
| SITOP  | Basic unit 24 V/20 A  | Basic unit 24 V/40 A   | Signaling module  | Buffer module   | Redundancy module   | Diagnosis module   |
| Order No.  | 6EP1436-3BA00   | 6EP1437-3BA00  | 6EP1961-3BA10   | 6EP1961-3BA00   | 6EP1961-3BA20   | 6EP1961-2BA00  |
| Input voltage rated value<br>– range   | 3x 400–500 V AC<br>3x 340 ... 550 V AC  | 3x 400–500 V AC<br>3x 340 ... 550 V AC                       | Contact rating<br>240 V/6 A AC  | 24 V DC<br>24...28.8 V DC   | 24 V DC<br>24...28.8 V DC   | 24 V DC<br>22...30 V DC  |
| Mains buffering  | > 6 ms (at 400 V)   | > 6 ms (at 400 V)  | <b>Product/Function description</b><br>Signaling module for lateral snapping onto the basic unit (6EP1xxx-3BA00); automatic contacting; with potential-free signaling contacts for “Output voltage o.k.” and “Operating readiness o.k.”; with signal input for remote ON/OFF switching of the basic unit. | <b>Product/Function description</b><br>Buffer module for bridging power failures; connected in parallel to basic unit’s (6EP1x3x-3BA00) output; buffering time 800 ms at 5 A or 100 ms at 40 A load current; multiplication through paralleling possible; maximum buffering time 3 s. | <b>Product/Function description</b><br>Module for redundancy mode. Decoupling of two basic units 5 A to 20 A or of one basic unit 40 A per redundancy module. Isolated relay contact and green LEDs for signaling “Feed-in 1 and 2 o.k.”, operating point settable from 20 to 25 V. | <b>Product/Function description</b><br>Diagnosis module for monitoring up to four 24 V load feeders; selective disabling of faulty feeders, nominal current of between 2 and 10 A individually specifiable; with common signal contact and LEDs in multiple colors; universal diagnosis module for all power supplies. |
| Line frequency rated value   | 50/60 Hz  | 50/60 Hz   |   |   |   |  |
| Input current rated value<br>– inrush current (25 °C / 77 °F)<br>– required protection in the supply cable | 1.1 A (at 400 V)<br>< 35 A<br>3-ph. coupled circuit-breaker 6–16 A Char. C or 3RV1021-1DA10 | 2.2 A (at 400 V)<br>< 70 A                                   |   |   |   |  |
| Output voltage rated value<br>– tolerance<br>– setting range   | 24 V DC<br>± 3%<br>24 ... 28.8 V DC   | 24 V DC<br>± 3%<br>24 ... 28.8 V DC                          | Not applicable  | 40 A  | 40 A (total output current)   | 4 x 10 A   |
| Output current rated value   | 20 A  | 40 A   | Not applicable  | 40 A  | 40 A (total output current)   | 4 x 10 A   |
| Efficiency at rated values approx.   | 90 %  | 90 %   | Not applicable  | Not applicable  | 97 %  | 97 %   |
| Parallel switch for higher perf.   | Yes, output characteristics switchable to parallel operation                                | Yes, output characteristics switchable to parallel operation | Not applicable  | Yes   | No  | No   |
| Electronic short-circuit protection  | Yes, selectable constant current or latching shutdown                                       | Yes, selectable constant current or latching shutdown        | Not applicable  | Yes   | No  | Yes  |
| RI specification (EN 55022)  | Class B   | Class B  | Class B   | Class B   | Class B   | Class B  |
| Line harmonic limitation to EN 61000-3-2   | Yes   | Yes  | Not applicable  | Not applicable  | Not applicable  | Not applicable   |
| Degree of prot. (EN 60529)   | IP 20   | IP 20  | IP 20   | IP 20   | IP 20   | IP 20  |
| Ambient temperature  | 0 ... +60 °C / 32 ... 140 °F  | 0 ... +60 °C / 32 ... 140 °F                                 | 0 ... +60 °C / 32 ... 140 °F  | 0 ... +60 °C / 32 ... 140 °F  | 0 ... +60 °C / 32 ... 140 °F  | 0 ... +60 °C / 32 ... 140 °F   |
| Dimensions (W x H x D)<br>in mm / inches   | 160 x 125 x 125 /<br>6.3 x 4.92 x 4.92  | 240 x 125 x 125 /<br>9.44 x 4.92 x 4.92                      | 25 x 125 x 125 /<br>0.98 x 4.92 x 4.92  | 70 x 125 x 125 /<br>2.76 x 4.92 x 4.92  | 70 x 125 x 125 /<br>2.76 x 4.92 x 4.92  | 72 x 90 x ca. 90 /<br>2.84 x 3.54 x appr. 3.54   |
| Weight approx.   | 2.0 kg / 4.4 lbs  | 3.2 kg / 7.1 lbs   | 0.15 kg / 0.33 lbs  | 1.2 kg / 2.65 lbs   | 0.8 kg / 1.76 lbs   | 0.4 kg / 0.88 lbs  |
| Approvals  | UL, cUL, CE   | UL, cUL, CE  | UL, cUL, CE   | UL, cUL, CE   | UL, cUL, CE   | UL, cUL, CE  |

<sup>1)</sup> Power supply units with output currents of 5 A and 10 A connectable to 2 phases of a 3-phase supply system: 6EP1333-3BA00 and 6EP1334-3BA00



# SITOP ordering data

The facets  
selection  
from our  
full range



## Technical specifications

## 1-phase

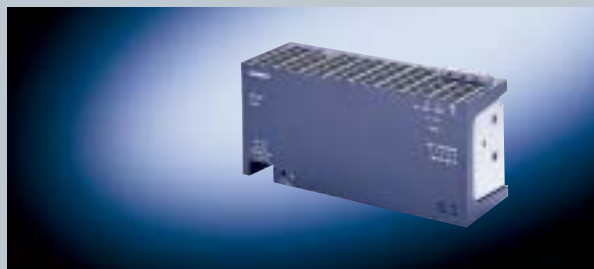
| SITOP  | 24 V/0.5 A                                  | 24 V/2 A                                      | 24 V/5 A   | 24 V/10 A   | 24 V/20 A   |
|--|---|---|--|---|---|
| Order No.  | 6EP1331-2BA10                               | 6EP1331-2BA00                                 | 6EP1333-2BA00                                    | 6EP1334-2BA00                                     | 6EP1336-2BA00   |
| Input voltage rated value<br>– range   | 120–230 V <sup>1)</sup> AC<br>93...264 V AC | 120/230 V AC<br>93...132 V/<br>187...264 V AC | AC 120/230 V<br>93 ... 132 V<br>187 ... 264 V AC | AC 120/230 V<br>93 ... 132 V /<br>187 ... 264 V   | AC 120/230 V<br>93 ... 132 V /<br>187 ... 264 V       |
| Mains buffering  | > 10 ms (at 230 V)                          | > 10 ms (at 93/187 V)                         | > 10 ms (at 93/187 V)                            | > 10 ms (at 93/187 V)                             | > 10 ms (at 93/187 V)                                 |
| Line frequency rated value   | 50/60 Hz                                    | 50/60 Hz                                      | 50/60 Hz   | 50/60 Hz  | 50/60 Hz  |
| Input current rated value<br>– inrush current (25 °C / 77 °F)<br>– recommended protection<br>in the supply cable | 0.22–0.13 A<br>< 23 A<br>from 3 A Char. C   | 0.9/0.6 A<br>< 14 A<br>from 3 A Char. C       | 2.2/0.9 A<br>< 32 A<br>from 6 A characteristic C | 5.5/2.1 A<br>< 65 A<br>from 10 A characteristic C | 8.0/3.3 A<br>< 81 A<br>from 16 A characteristic C     |
| Output voltage rated value<br>– tolerance<br>– setting range   | 24 V DC<br>± 3%<br>—                        | 24 V DC<br>± 3%<br>22.8 ... 26.4 V DC         | 24 V DC<br>± 3%<br>22.8 ... 26.4 V DC            | 24 V DC<br>± 3%<br>22.8 ... 28.8 V DC             | 24 V DC<br>± 3%<br>22.8 ... 26.4 V DC                 |
| Output current rated value   | 0.5 A                                       | 2 A   | 5 A  | 10 A  | 20 A  |
| Efficiency at rated values approx.   | 74%   | 82%   | 87%  | 89%   | 87%   |
| Parallel switch for higher perf.   | No  | Yes   | Yes  | Yes   | Yes   |
| RI specification (EN 55022)  | Class B                                     | Class B                                       | Class B  | Class B   | Class B   |
| Line harmonic limitation to<br>EN 61000-3-2  | Not applicable                              | Not applicable                                | Yes  | Yes   | Yes   |
| Degree of prot. (EN 60529)   | IP 20                                       | IP 20   | IP 20  | IP 20   | IP 20   |
| Ambient temperature  | –20 ... +70 °C / –4 ... 158 °F              | 0 ... +60 °C / 32 ... 140 °F                  | 0 ... +60 °C / 32 ... 140 °F                     | 0 ... +60 °C / 32 ... 140 °F                      | 0 ... +55 °C / 32 ... 131 °F                          |
| Dimensions (W x H x D) in mm   | 22.5 x 80 x 91 /<br>8.86 x 3.15 x 3.58      | 50 x 125 x 125 /<br>1.97 x 4.92 x 4.92        | 75 x 125 x 125 /<br>2.95 x 4.92 x 4.92           | 100 x 125 x 135 /<br>3.94 x 4.92 x 5.31           | 280 x 125 x 92 <sup>2)</sup> /<br>11.03 x 4.92 x 3.63 |
| Weight approx.   | 0.11 kg / 0.24 lbs                          | 0.4 kg / 0.9 lbs                              | 0.75 kg / 1.7 lbs                                | 1.1 kg / 2.4 lbs                                  | 2.4 kg / 5.3 lbs                                      |
| Approvals  | UL, cUL, CE                                 | UL, cUL, CE                                   | UL, cUL, CE                                      | UL, cUL, CE                                       | UL, cUL, CE   |

<sup>1)</sup> With input voltage 48-220 V DC, Order No. 6EP1731-2BA00

<sup>2)</sup> For minimum unit area requirements in the switching cabinet backplane, a mounting bracket is available.  
Order No. 6EP1971-2BA00; Dimension: W x H x D: mm / inches 100 x 150 x 320 / 4 x 5.9 x 12.6. Appr. wt.: 0.9 kg / 1.98 lbs

# SITOP ordering data

The facets  
selection  
from our  
full range



## Technical specifications

## Three Phase

| SITOP power   | 24 V/10 A   | 24 V/20 A  | 24 V/40 A  |
|---|---|--|--|
| Order No.   | 6EP1434-2BA00   | 6EP1436-2BA00  | 6EP1437-2BA10  |
| Input voltage rated value<br>– range  | 3 AC 400-500 V<br>360 ... 550 V <sup>1)</sup>   | 3 AC 400-500 V<br>360 ... 550 V <sup>1)</sup>  | 3 AC 400-500 V<br>360 ... 550 V <sup>1)</sup>  |
| Mains buffering   | > 6 ms (at 360 V)   | > 3 ms (at 360 V)  | > 3 ms (at 360 V)  |
| Line frequency rated value  | 50/60 Hz  | 50/60 Hz   | 50/60 Hz   |
| Input current rated value<br>– inrush current (25 °C / 77 °F)<br>– required protection<br>in the supply cable | 0.65 A (400 V)<br>< 25 A<br>3-ph. coupled circuit breaker<br>characteristic C max. 25 A<br>or 3VU1300-0MJ00<br>or 3RV1021-1DA10 | 1.2 A (400 V)<br>< 25 A<br>3-ph. coupled circuit breaker<br>characteristic C max. 25 A<br>or 3VU1300-0MJ00<br>or 3RV1021-1DA10 | 1.9 A (400 V)<br>< 25 A<br>3-ph. coupled circuit breaker<br>characteristic C max. 25 A<br>or 3VU1300-0MJ00<br>or 3RV1021-1DA10 |
| Output voltage rated value<br>– tolerance<br>– setting range  | 24 V DC<br>± 3%<br>22.8 ... 26.4 V DC   | 24 V DC<br>± 3%<br>22.8 ... 26.4 V DC  | 24 V DC<br>± 3%<br>22.8 ... 26.4 V DC  |
| Output current rated value  | 10 A  | 20 A   | 40 A   |
| Efficiency at rated values approx.  | 89%   | 89%  | 90 %   |
| Parallel switch for higher perf.  | Yes   | Yes  | Yes  |
| RFI specification (EN 55022)  | Class B   | Class B  | Class B  |
| Line harmonic limitation to<br>EN 61000-3-2   | Yes   | Yes  | Yes  |
| Degree of prot. (EN 60529)  | IP 20   | IP 20  | IP 20  |
| Ambient temperature   | 0 ... +55 °C / 32 ... 131 °F  | 0 ... +55 °C / 32 ... 131 °F   | 0 ... +55 °C / 32 ... 131 °F   |
| Dimensions (W x H x D) in mm /<br>inches  | 280 x 125 x 92 <sup>2)</sup> / 11.03 x 4.92 x 3.63  | 280 x 125 x 92 <sup>2)</sup> / 11.03 x 4.92 x 3.63   | 280 x 180 x 92 <sup>2)</sup> / 11.03 x 4.92 x 3.63   |
| Approx. weight  | 2 kg / 4.4 lbs  | 2 kg / 4.4 lbs   | 3.6 kg / 8.0 lbs   |

<sup>1)</sup> 340...360 V permissible for max. 2 sec.

The information provided in this brochure contains merely general descriptions or characteristics of performance which in actual case of use do not always apply as described or which may change as a result of further development of the products. An obligation to provide the respective characteristics shall only exist if expressly agreed in the terms of contract.

<sup>2)</sup>For minimum unit area requirements in the switching cabinet backplane, a mounting bracket is available.  
Order No. 6EP1971-2BA00; Dimension: W x H x D: mm / inches 100 x 150 x 320 / 4 x 5.9 x 12.6. Appr. wt.: 0.9 kg / 1.98 lbs

Siemens AG

Automation and Drives

Systems Engineering A&D SE PS

P.O. Box 23 55, D-90713 Fürth

www.siemens.com/sitop

© Siemens AG 2004

Subject to change without prior notice 07/04

Order No. E80001-A2140-P310-V2-7600

Dispo 06305

Z1D06934 MK:SE:ST:STP:52.4:39 SB 09045. Printed in Germany