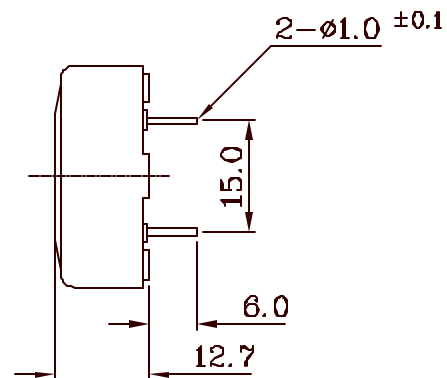
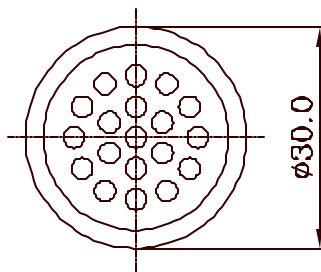


SPECIFICATIONS

PARAMETERS	VALUES	UNITS
Rated Input Power	0.15	W
Maximum Input Power	0.20	W
Impedance	100 ± 20%	Ohm
Minimum Sound Pressure Level @ 10 cm (At 1 kHz, 3.16 Vrms sine wave)	78	dB
Resonant Frequency	1100 ± 200	Hz
Frequency Range	1100 ~ 10,000	Hz
Operating Temperature Range	-40 ~ +70	°C
Housing Material	ABS Black	
Terminal	Tin-Plated Copper Pins	
Weight	10	g

REVISIONS

LTR	DESCRIPTION	DATE	APPROVED
-	RELEASED FROM ENGINEERING	05/07/02	



NOTES:

1. ALL DIMENSIONS ARE IN MILLIMETERS.
2. SPECIFICATION SUBJECT TO CHANGE OR WITHDRAWAL WITHOUT NOTICE.

DRAWING NAME
AT40

UNLESS OTHERWISE SPECIFIED
DIMENSIONS ARE IN MILLIMETERS
TOLERANCES ARE:
FRACTIONS DECIMALS ANGLES
± — XX ± 0.5 ±
XXX ± —

APPROVALS	DATE
DRAWN <i>RABL</i>	05/02
CHECKED	
APPROVED <i>S. J.</i>	05/07/02
DO NOT SCALE DRAWING	



**projects[®]
unlimited**

Dayton, Ohio

SPEAKER AUDIO TRANSDUCER
AT-40

SIZE A	MATERIAL	DRAWING NO. AT40.DWG
SCALE 1/1	MAX. WT.	SHEET 1 OF 1