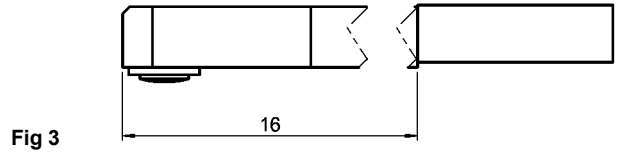
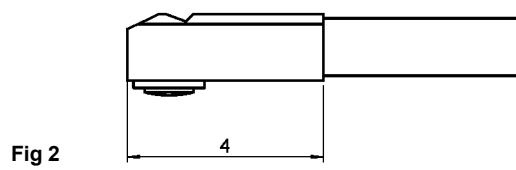
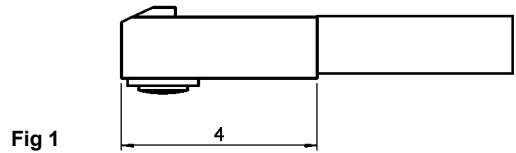
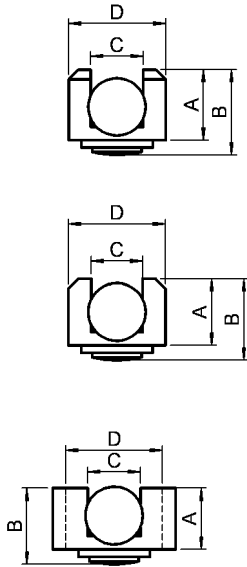


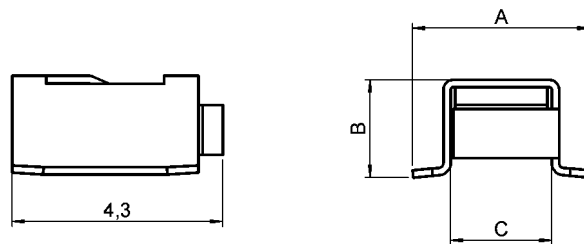
### UMP H2 PLUGS (solder type) ONLY AVAILABLE AS PART OF A PIGTAIL OR A CABLE ASSEMBLY



| UMP type | Cable        | mating type | part number  | fig | dimension (mm) |      |      |      | finish | packaging |
|----------|--------------|-------------|--------------|-----|----------------|------|------|------|--------|-----------|
|          |              |             |              |     | A              | B    | C    | D    |        |           |
| H2       | 0.8 + 1/50/S | lock        | R107 001 000 | 1   | 1.44           | 1.74 | 1.07 | 1.97 | gold   | 1         |
|          | 0.8 + 1/50/S | snap on     | R107 011 000 | 2   | 1.35           | 1.65 | 1.07 | 1.97 | gold   | 1         |
|          | 0.8 + 1/50/S | slide on    | R107 021 020 | 3   | 1.24           | 1.54 | 1.07 | 1.97 | gold   | 1         |
|          | 1/75/S       | lock        | R107 001 020 | 1   | 1.44           | 1.74 | 1.07 | 1.97 | gold   | 1         |

See page 15 for order information.

### SMT RECEPTACLES (2mm height)



Only intermatable with plugs part of pigtails or cable assemblies indicated on pages 8 and 9.

| UMP type | part number   | dimension (mm) |   |      | finish | packaging | reel dimensions (mm) | recommended use for |
|----------|---------------|----------------|---|------|--------|-----------|----------------------|---------------------|
|          |               | A              | B | C    |        |           |                      |                     |
| H2       | R107 003 000  | 3.6            | 2 | 2.05 | gold   | 4000 pces | 330                  | mass production     |
|          | R107 003 010  | 3.6            | 2 | 2.05 | gold   | 100 pces  | 180                  | pre-series          |
|          | R107 003 010W | 3.6            | 2 | 2.05 | gold   | 1         | /                    | sampling            |

Please see soldering procedure on pages 18, 19 and 20.