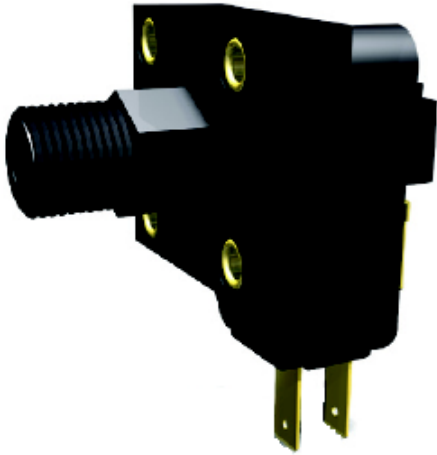


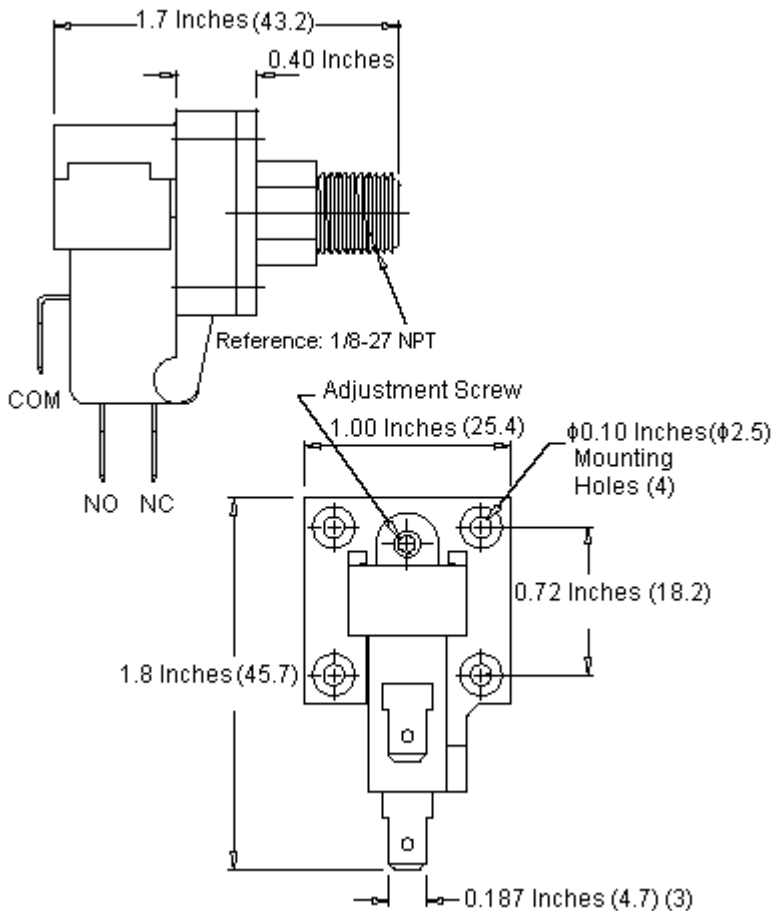
Pressure Switch

High Current



Features:

- Controllable hysteresis (deadband).
- Field adjustable pressure set point, from 3 inches H₂O to 60psi.
- Snap action basic switch, up to 25A*, 125/250V ac.
- Many standard pressure ports and mounting options.
- Custom design and engineering available.
- Small size, light weight, low cost.
- Dependable long life (10+ million cycles).
- * Not available on all ranges.



Dimensions: Inches (Millimetres)

Description:

Design flex™ standard options - choose from our standard PSF103 options as shown or contact our vertically integrated in-house design and engineering team for special features and unique application needs.

Pressure Switch

High Current



Specifications:

Mechanical:

- Standard tolerance : ±20% (tight tolerances available).
- Switch type : SPDT (single pull/double throw) normally open or normally closed.
- Switching medium : Air, compatible fluids.
- Mechanical life : More than 10 million cycles.
- Proof pressure : Varies by option - see adjustable pressure set point options next page.
- Operating temperature : +40°F to +150°F (standard), -46°F to +205°F (contact us).

Physical:

- Case material : Polycarbonate (optional: Lexan 141, Supec®, Ultem®, Noryl®).
- Pressure port options : Many standard ports - see pressure port/cover options next page.
- Diaphragm material : Polyurethane (Teflon® optional with limited pressure ranges).
- Contact points : Silver (gold available on special order).
- Electrical connections : Terminals - 0.187 inches x 0.020 inches tab-type for use with quick disconnects (ref. AMP #2-520182-2 or equivalent) 0.250 inches available - contact us.
- Mounting : #4 screws through mounting lugs; #2 screws through eyelets; mounting bracket available.
- Weight : Less than 20grams.

Electrical:

- Current rating : Varies by option - see adjustable pressure set point options next page.
- Operating voltage : See adjustable pressure set point options.

Specification Table

Description	In.H ₂ O	mbar	psi	Proof Pressure (Polyurethane)	Proof Pressure (Teflon)	Electrical 125/250V ac	Part Number
Pressure Switch, 0.11 - 0.4psi	3 to 10	7.5 to 25	0.11 to 0.4	30psi	15psi	3A	PSF103-9011-902
Pressure Switch, 0.4 - 1psi	10 to 28	25 to 69	0.4 to 1.0		10A	PSF103-9011-903	
Pressure Switch, 1 - 4psi	28 to 111	69 to 276	1.0 to 4.0		30psi	PSF103-9011-904	
Pressure Switch, 4 - 15psi	111 to 416	276 to 1034	4.0 to 15.0	100psi	15A	PSF103-9061-905	
Pressure Switch , 15 - 0.1psi	416 to 1664	1034 to 4137	15.0 to 16.0			PSF103-9061-906	

Disclaimer This data sheet and its contents (the "Information") belong to the Premier Farnell Group (the "Group") or are licensed to it. No licence is granted for the use of it other than for information purposes in connection with the products to which it relates. No licence of any intellectual property rights is granted. The Information is subject to change without notice and replaces all data sheets previously supplied. The Information supplied is believed to be accurate but the Group assumes no responsibility for its accuracy or completeness, any error in or omission from it or for any use made of it. Users of this data sheet should check for themselves the Information and the suitability of the products for their purpose and not make any assumptions based on information included or omitted. Liability for loss or damage resulting from any reliance on the Information or use of it (including liability resulting from negligence or where the Group was aware of the possibility of such loss or damage arising) is excluded. This will not operate to limit or restrict the Group's liability for death or personal injury resulting from its negligence. SPC Multicomp is the registered trademark of the Group. © Premier Farnell plc 2009.