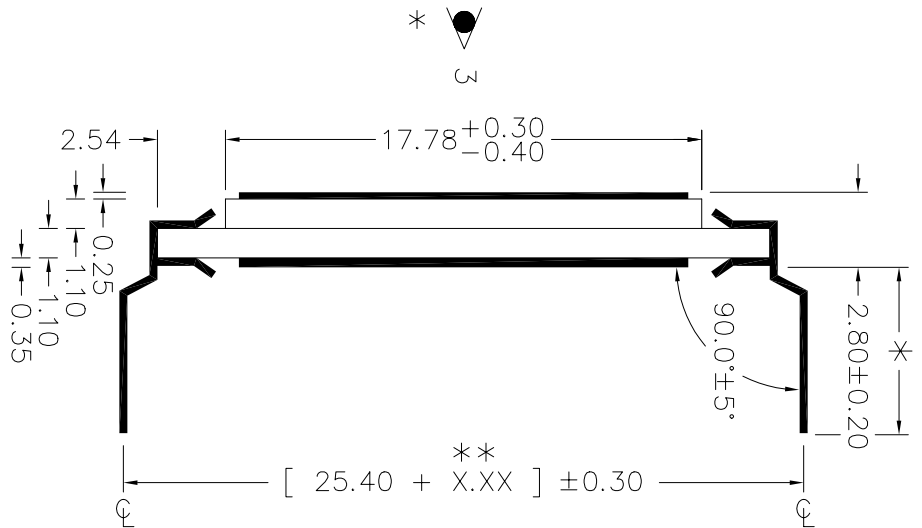
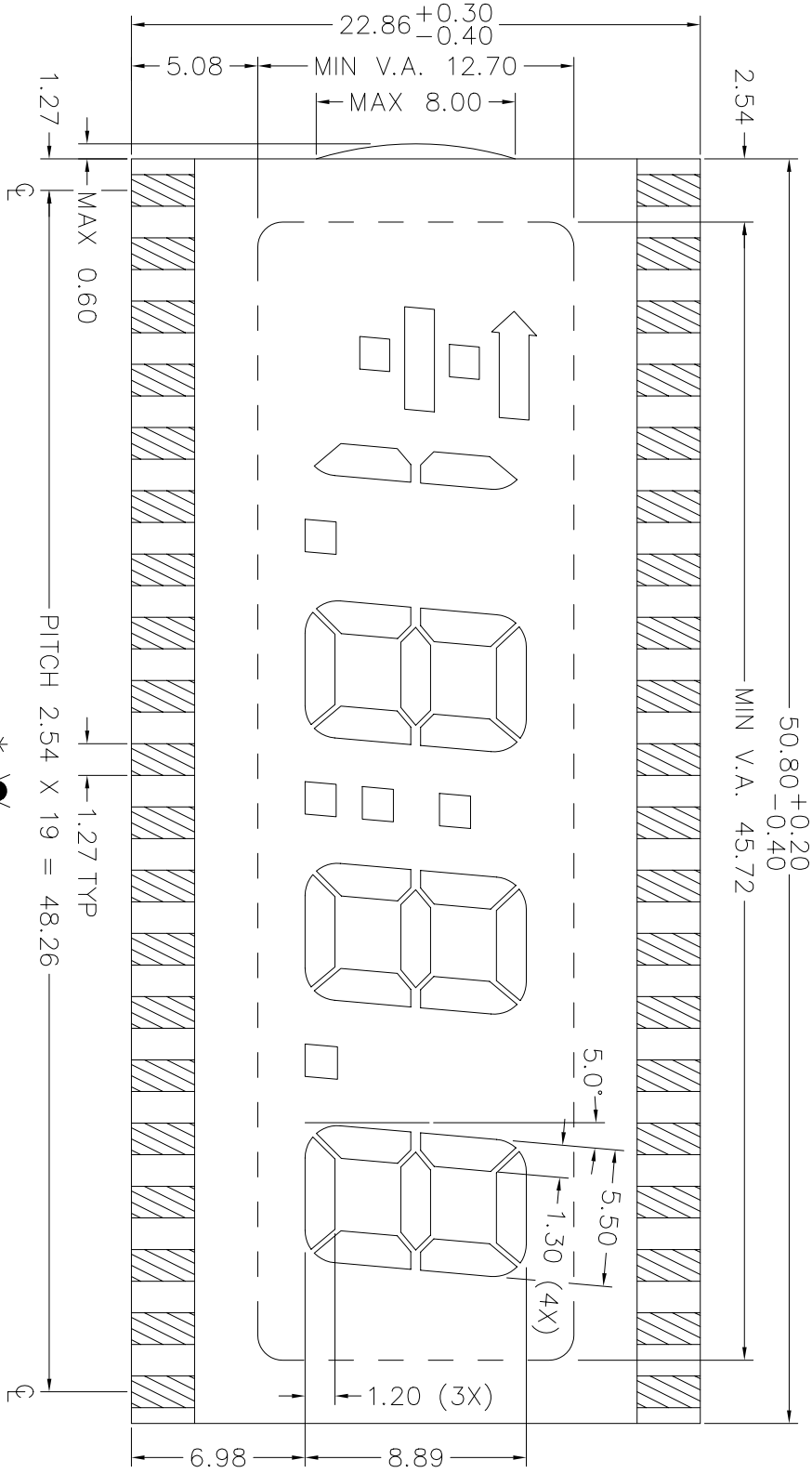


12



50.80 +0.20
-0.40
MIN V.A. 45.72



REMARKS : 1) * - REFER TO COVER PAGE

2) ** --- X.XX = 2.54 (FOR PIN LENGTH ≥ 3.20 & ≤ 10.00mm)

** ---- X.XX = 1.75 (FOR PIN LENGTH > 10.00 & ≤ 19.50mm)

VAARTRONIX LTD.

Dimension : mm

TOL : ±0.15 IF NOT SPECIFY

3rd ANGLE PROJECTION

DWG.ND :

VI-301-1

REV

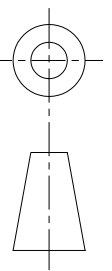
0

Drawn by : YIN

Date : 98/09/04

Checked by :

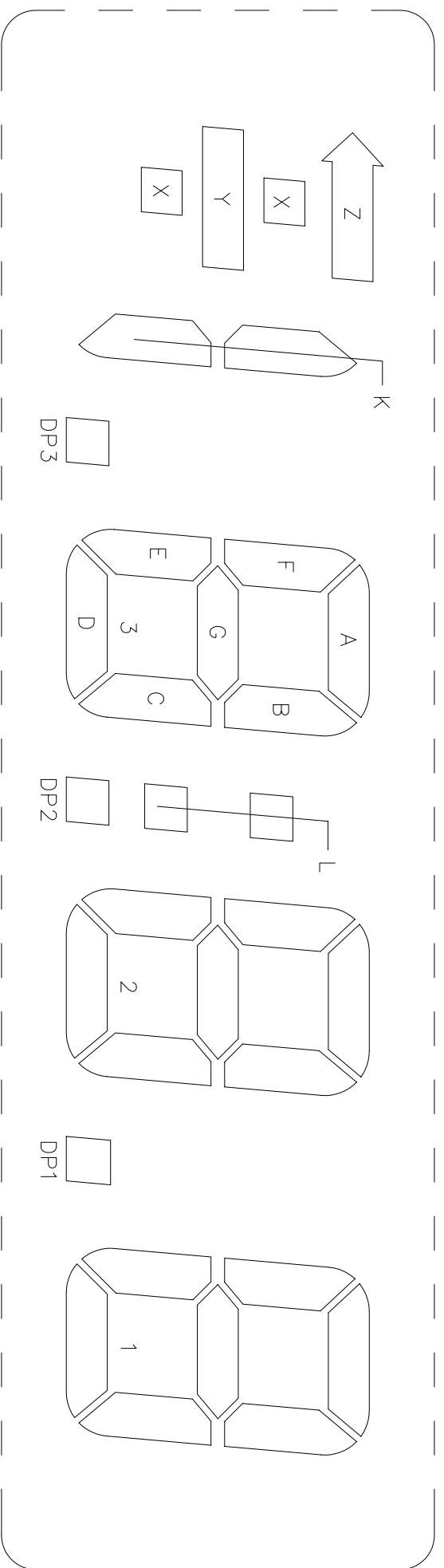
Date :



PIN40

DWG.NO. : VI-301-1 (REV.0)

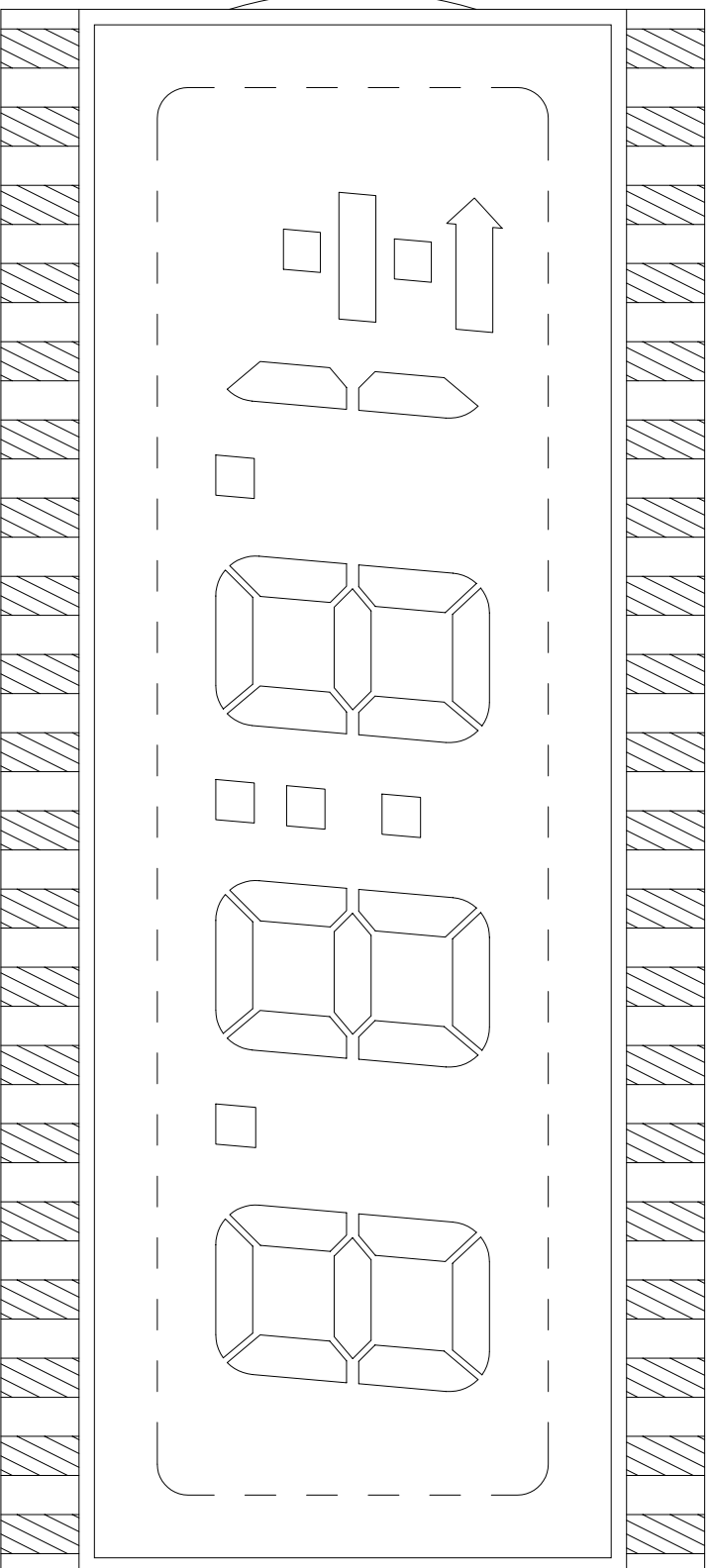
PIN21



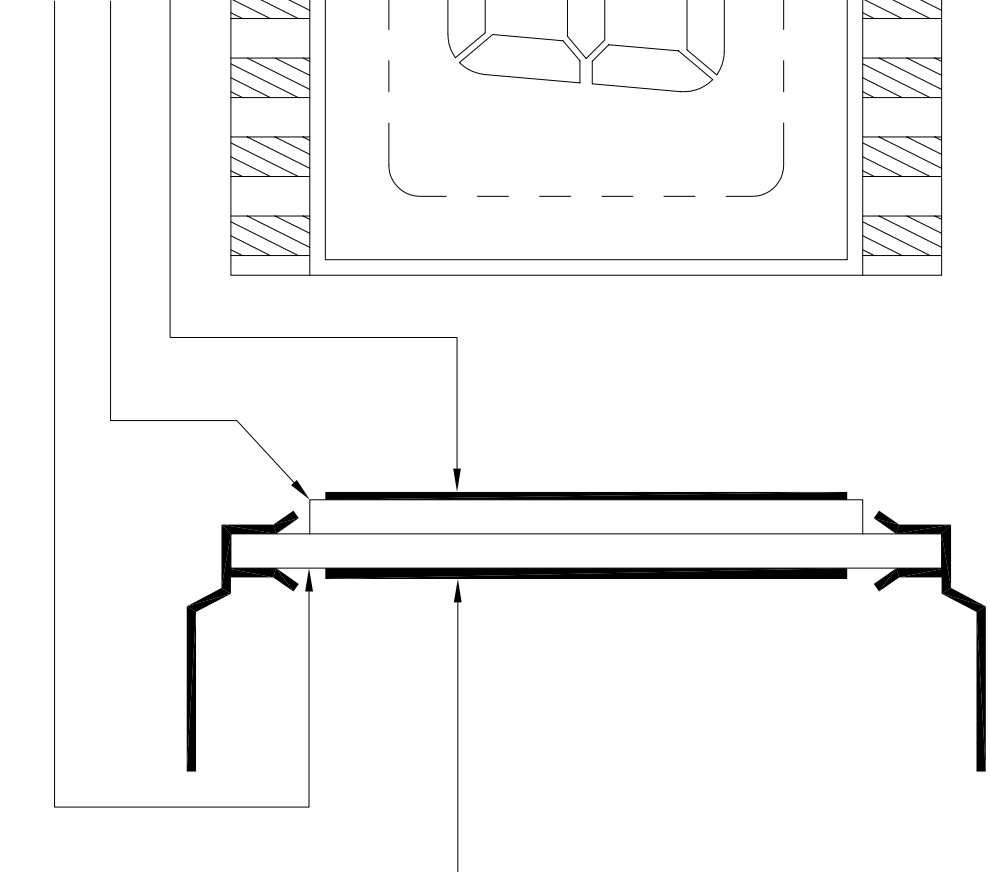
PIN1

PIN20

DWG.NO. : VL-301-1 (REV.0)



FRONT POLARIZER
FRONT GLASS
BACK GLASS
BACK POLARIZER



DWG.NO. : VI-301-1(REV.0)

PIN	COM1	PIN	COM1
1	COM1	21	1A
2	Y	22	1F
3	K	23	1G
4	N.C.	24	2B
5	N.C.	25	2A
6	N.C.	26	2F
7	N.C.	27	2G
8	DP3	28	L
9	3E	29	3B
10	3D	30	3A
11	3C	31	3F
12	DP2	32	3G
13	2E	33	N.C.
14	2D	34	N.C.
15	2C	35	N.C.
16	DP1	36	N.C.
17	1E	37	N.C.
18	1D	38	Z
19	1C	39	X
20	1B	40	COM1

REMARKS : 1) N.C. = NO CONNECTION

2) PCB LINKAGE : PIN1 & PIN40